



AAPA's Energy & Environment Seminar



Overview:

Largest Tonnage Port in the Western Hemisphere



OVER 292 MILLION SHORT TONS TRANSPORTED VIA, ON AVERAGE, 4,000 VESSELS AND 55,000 BARGES



VALUE:
OVER \$57 BILLION IN EXPORTS
OVER \$18 BILLION IN IMPORTS



OVER 40 LIQUID AND BULK TERMINALS

LARGEST GRAIN PORT IN THE U.S. (50% OF ALL THE NATION'S EXPORTS)
seven grain elevators



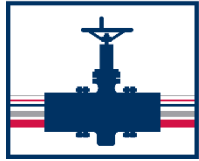
MAJOR ENERGY TRANSFER PORT IN THE U.S.
four oil refineries & seven crude oil storage terminals



FOREIGN TRADE ZONE #124
RANKED FIRST IN THE U.S.
**Received 75 billion in merchandise*
**12 subzones*



Petrochemical Industries



PLAINS
ALL AMERICAN
PIPELINE

MOTIVA
ENTERPRISES LLC
Norco & Convent



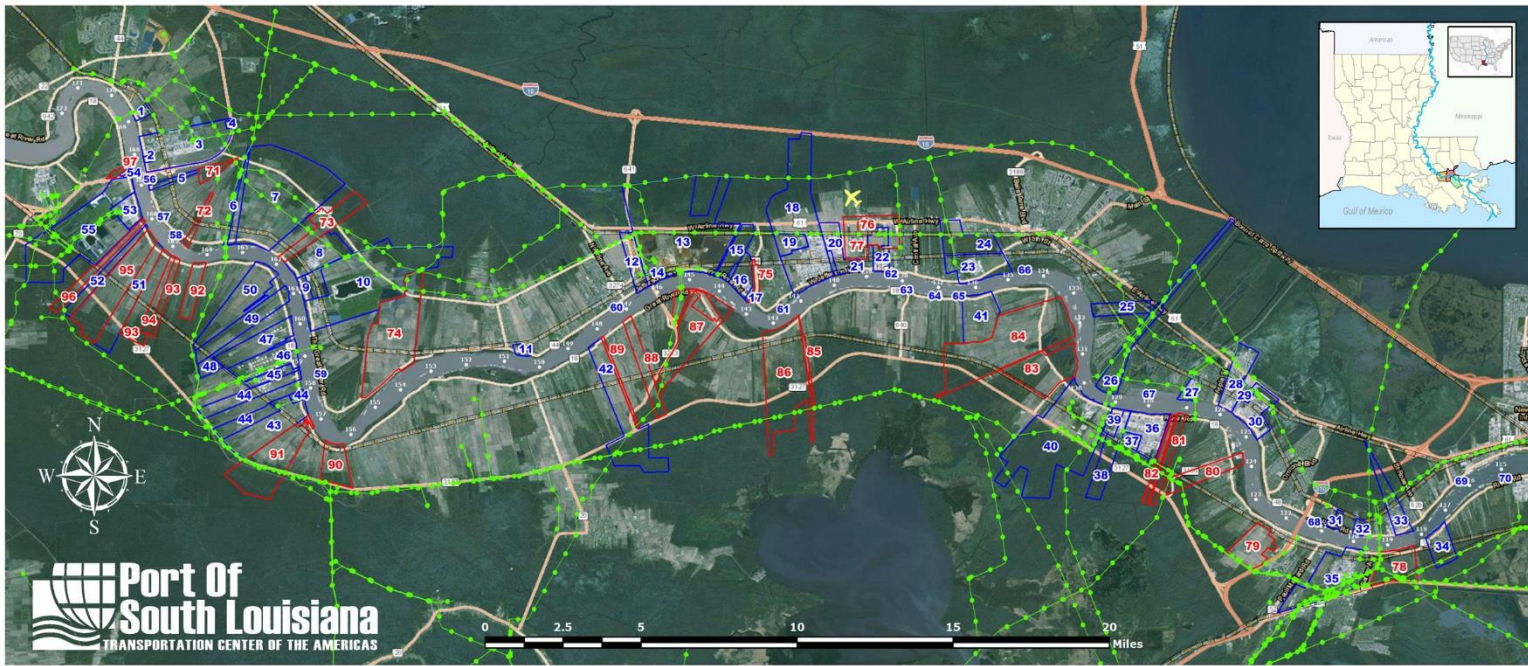
IMTT
International Matex Tank Terminals



ERGONE



JURISDICTION



33 Crude
159 NG
Pipelines

EXISTING INDUSTRY

1 Dupont / Dow	19 Pinnacle Polymers	36 Dow - St. Charles
2 LaFarge Corporation	20 Cargill Terre Haute Elevator / Bulk Liquid	37 Galata Chemicals
3 Motiva Enterprises - Convent	21 ADM - Reserve	38 Occidental Chemical
4 Air Products & Chemicals	22 Globalplex Intermodal Terminal	39 Mosaic
5 Yara North America	23 Dupont Performance Elastomers	40 Entergy / Waterford 1, 2, 3
6 Zen-Noh Grain	24 El Dupont	41 Eurochem
7 Nucor Steel Louisiana, LLC	25 Arcelor Mittal	42 Petroplex International, LLC
8 Occidental Chemical	26 Entergy / Little Gypsy	43 Yuhuang Chemical Company
9 Convent Marine	27 Momentive	44 Plains All American
10 Mosaic - Uncle Sam	28 Shell Chemical	45 Locap, Inc.
11 ADM - Paulina	29 Motiva Enterprises - Norco	46 Shell Pipeline
12 Louisiana Sugar Refinery	30 Valero - St. Charles	47 NuStar
13 Noranda Aluminum	31 ADM - Destrehan	48 Syngas Energy
14 Rain Clt	32 Bunge North American	49 Ergon / Sun Fuel Midstream
15 Pin Oak Terminals	33 International Matex Tank Terminals (IMTT)	50 South Louisiana Methanol
16 Nalco/Ecolab	34 ADM - Ama	51 Marubeni Corporation (Gavilon)
17 Evonik	35 Monsanto	52 INCA Refining
18 Marathon Petroleum Corporation		53 Americas Styrenics

54 Valero Asphalt
55 Mosaic - Faustina
56 Associated Terminals Sunshine Midstream Buoy
57 Sunshine Anchorage
58 Associated Terminals Midstream Buoy
59 Ryan Walsh Stevedoring Midstream Buoy
60 Grandview Anchorage
61 St. John Fleet Midstream Buoy
62 Reserve Midstream Buoy
63 Reserve Anchorage
64 Capital Marine Tigerville Midstream Buoy
65 Gold Mine Fleet Midstream Buoy
66 CGB Midstream Buoy
67 Bonne Carre Anchorage
68 ADM Midstream Buoy
69 Ama Anchorage
70 Kenner Bend Anchorage

HEAVY INDUSTRIAL SITES

71 Ancient Domain - 225 acres	85 Whiteose - 300 acres; 854' rf
72 Balot & Whitehall - 240 acres; 980' rf	86 Willow Bend - 2,200 acres; 6,000' rf
73 Shady Grove - 231 acres; 1,690' rf	87 Robert Brothers Farm - 1,582 acres; 8,448' rf
74 Welham - 2,300 acres; 2,000' rf	88 Goodwill Plantation - 500 acres; 1,500' rf
75 Hope Plantation - 283 acres; 1,500' rf	89 Succeed - 100 acres; 384' rf
76 Guidry Property - 84 acres	90 Rich Bend Plantation - 500 acres; 1,300' rf
77 Airline Industrial Park - 1,100 acres	91 Zeringue / St. Emma - 1,464 acres; 2,254' rf
78 Davis Levert - 100 acres; 2,640' rf	92 Savannah - 381 acres; 1,954' rf
79 Esperanza Business Park - 650 acres	93 Minnie & St. Louis - 900 acres; 2,482' rf
80 Home Place - 375 acres	94 St. Alice - 321 acres; 670' rf
81 Pelican-Occidental - 489 acres; 1,373' rf	95 Winchester / Acadia - 1,490 acres; 2,403' rf
82 SoLaPort - 99 acres; 263' rf	96 Elina - 406 acres; 520' rf
83 St. Charles Riverpark - 1,170 +/- acres; 5,800' rf	97 Dunhill - 51 acres; 1,100' rf
84 Glendale Hymelia - 2,500 acres; 5,808' rf	

THROUGHPUT; REFINING and STORAGE CAPACITIES

	Crude Oil	Petrochemicals
Exports (2015)	11.0 million barrels <i>1.66 million short tons</i>	69.7 million barrels <i>10.5 million short tons</i>
Imports (2015)	374.4 million barrels <i>56.31 million short tons</i>	12.7 million barrels <i>1.91 million short tons</i>
Passing through Foreign Trade Zone #124	\$33.36 billion (2014)	
Refineries Process Capacity	1.374 million barrels per day	
Storage Capacity	216.6 million barrels	

ENVIRONMENTAL CONCERNS & SOLUTIONS

- Air emissions
- Ground water contamination
- Fire and combustion
- Noise pollution
- Oil spills
- Mandated regulations (DEQ) - attainment
- Process monitoring/equipment maintenance
- Technological advancements
- Dust control (e.g. atomized dust suppression)
- Spill Prevention, Control, and Countermeasure (SPCC) rule

EMERGENCY SUPPORT/RESPONSE



Port of South Louisiana Maritime Law Enforcement Team



M/V Nathan Folse, one of four emergency response vessels in Port of South Louisiana's fleet



24/7 Emergency Response Division

It has the planning and training to mitigate, prevent, prepare, and respond to an emergency in its jurisdiction.

PORT BENEFITS



INDUSTRIAL REVENUE BOND FINANCING

AUTHORITY TO ISSUE TAXABLE AND TAX-EXEMPT BONDS TO ASSIST INDUSTRIAL FACILITIES LOCATING WITHIN OUR PORT DISTRICT

INDUSTRIAL TAX EXEMPTION PROGRAM (ITEP)

OFFERS TAX ABATEMENT UP TO 10 YEARS ON MANUFACTURER'S NEW INVESTMENT



PILOTS PROGRAM

CAN MIRROR ITEP BUT NOT LIMITED TO MANUFACTURING OR TO A 10-YEAR TERM

FOREIGN TRADE ZONE (FTZ) #124

OPERATOR OF ONE OF THE MOST ACTIVE TRADE ZONES IN AMERICA



Economic Development

	<i>Parish</i>	<i>Capital Investment</i>	<i># Direct Jobs Created</i>	<i>Average Salary</i>
Nucor Steel – U.S.	St. James	\$ 3.4 billion	1,250	\$ 75K
Yuhuang Chemical – China (<i>methanol</i>)	St. James	\$ 1.85 billion	400	\$ 85K
EuroChem – Russia (<i>fertilizer</i>)	St. John	\$ 1.5 billion	200	\$ 58K
South Louisiana Methanol – U.S./New Zealand	St. James	\$ 1.3 billion	63	\$ 66K
AM Agrigen Industries – India (<i>fertilizer</i>)	St. Charles	\$ 1.25 billion	150	\$ 55K
Entergy Little Gypsy Expansion – U.S.	St. Charles	\$ 1.0 billion	15 – 20	

.....

Economic Development

	<i>Parish</i>	<i>Capital Investment</i>	<i># Direct Jobs Created</i>	<i>Average Salary</i>
Monsanto Expansion – U.S.	St. Charles	\$ 975 million	95	\$ 76K
Pin Oak Terminals – U.S. (crude oil)	St. John	\$ 750 million	80 - 100	\$ 63K
NuStar – U.S. (crude oil tank storage)	St. James	\$ 365 million	32	\$98K
Syngas Energy - Malaysia (methanol)	St. James	\$ 360 million	86	\$ 78K
Petroplex International – U.S. (crude oil)	St. James	\$ 300 million	60	\$ 65K
Marubeni Corporation (Gavilon Trading - Japan (grain))	St. James	\$ 250 million	100	

.....

Economic Development

	<i>Parish</i>	<i>Capital Investment</i>	<i># Direct Jobs Created</i>	<i>Average Salary</i>
First Bauxite Corporation - Canada <i>(proppants)</i>	St. John	\$ 200 million	100	\$ 70K
Bunge North America expansion – U.S. <i>(grain)</i>	St. Charles	\$ 140 million		
Momentive Specialty Chemicals – U.S.	St. Charles	\$ 38 million	8	\$ 82K
Kongsberg Maritime – Norway <i>(office & training)</i>	St. Charles	\$ 15 million	200	\$ 100K
Denka Performance Elastomers – Japan <i>Corporate Headquarters</i>	St. John		16 (corporate)	\$ 80K
Formosa Petrochemical Corporation – Taiwan <i>(industrial complex feasibility study)</i>	St. James	\$ 9.4 billion	1,200	\$ 84.5K

Announced Future Projects: \$23.093 billion capital investment and, at least, 4,055 direct jobs



**SUPPORT
YOUR
PORT!**



THANK YOU