



TEAM

THE BOARDING COMPANY

PASSENGER ACCESS IN THE 21st CENTURY

**A review of PASSENGER BOARDING BRIDGES
for Cruise and Ferry Terminals**

AAPA Cruise Seminar – Grand Cayman – 11 January 2007

**Jordi Floreta - Managing Director, Ports
Martin Westphal - Marketing Director**

TEAM, Tecnología Europea Aplicada al Movimiento S.L.

- Founded: 1991
- Employees: 453
- Business lines: Passenger Boarding Bridges, Airport & Seaport Terminal Products & Services, Aircraft Recovery
- Head office: Barcelona (SPAIN)
- USA office: Coral Gables, FL (USA)
- PBB Projects: 1991-2006: 500+ PBB for airports in 35 countries around the world
- 1997-2006: 22 PBB for seaports in Europe, N-Africa, Caribbean, USA and Australia
- 2007: 17 PBB for seaports currently in design/construction
- Factory: Spain + production facilities in Mexico & SouthEastAsia

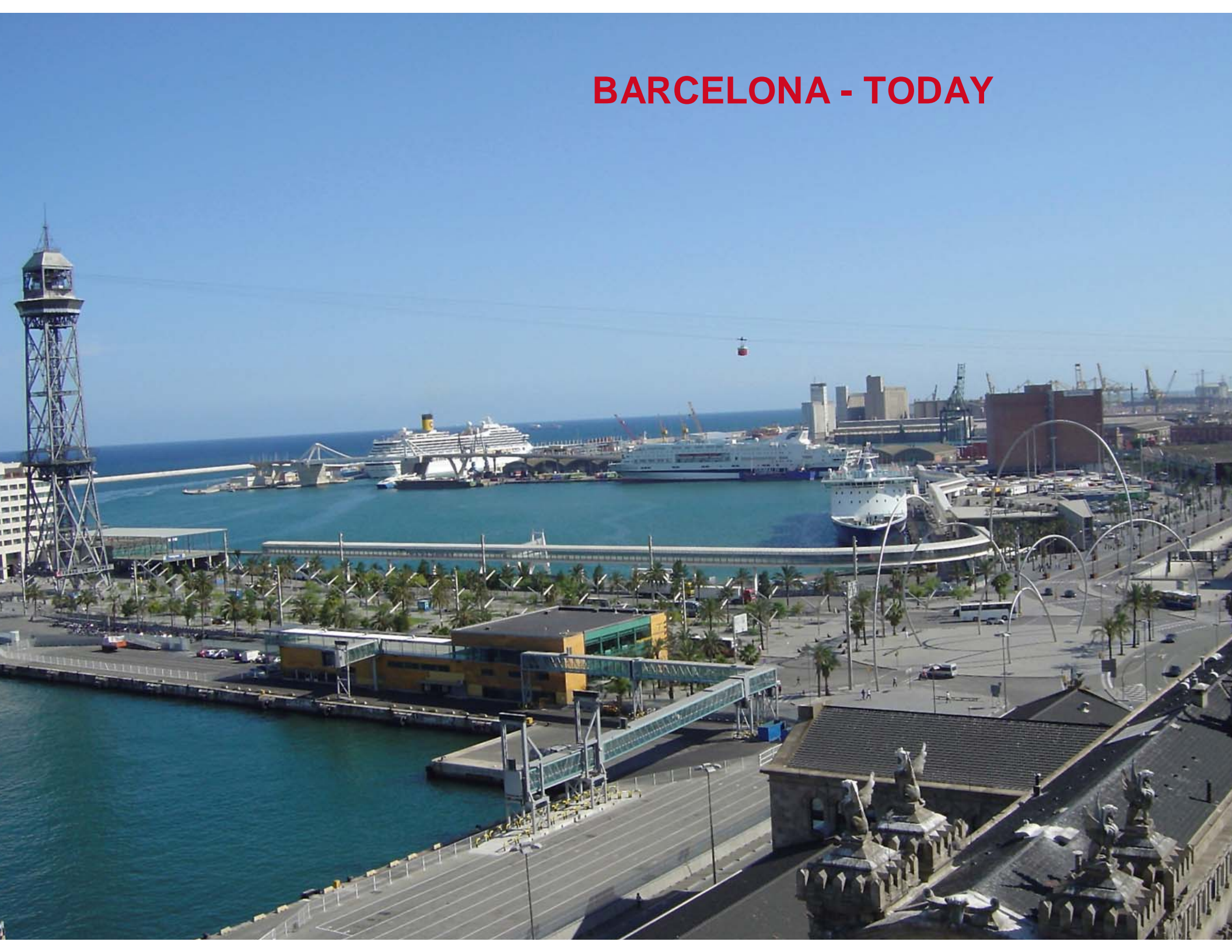
PASSENGER EXPERIENCE IS PARAMOUNT:

- Your Voyage Begins Here
- Recharge Your Batteries
- Get Ready For Adventure
- Be Pampered
- Convenience
- Pleasure
- Services
- Style
- Fun

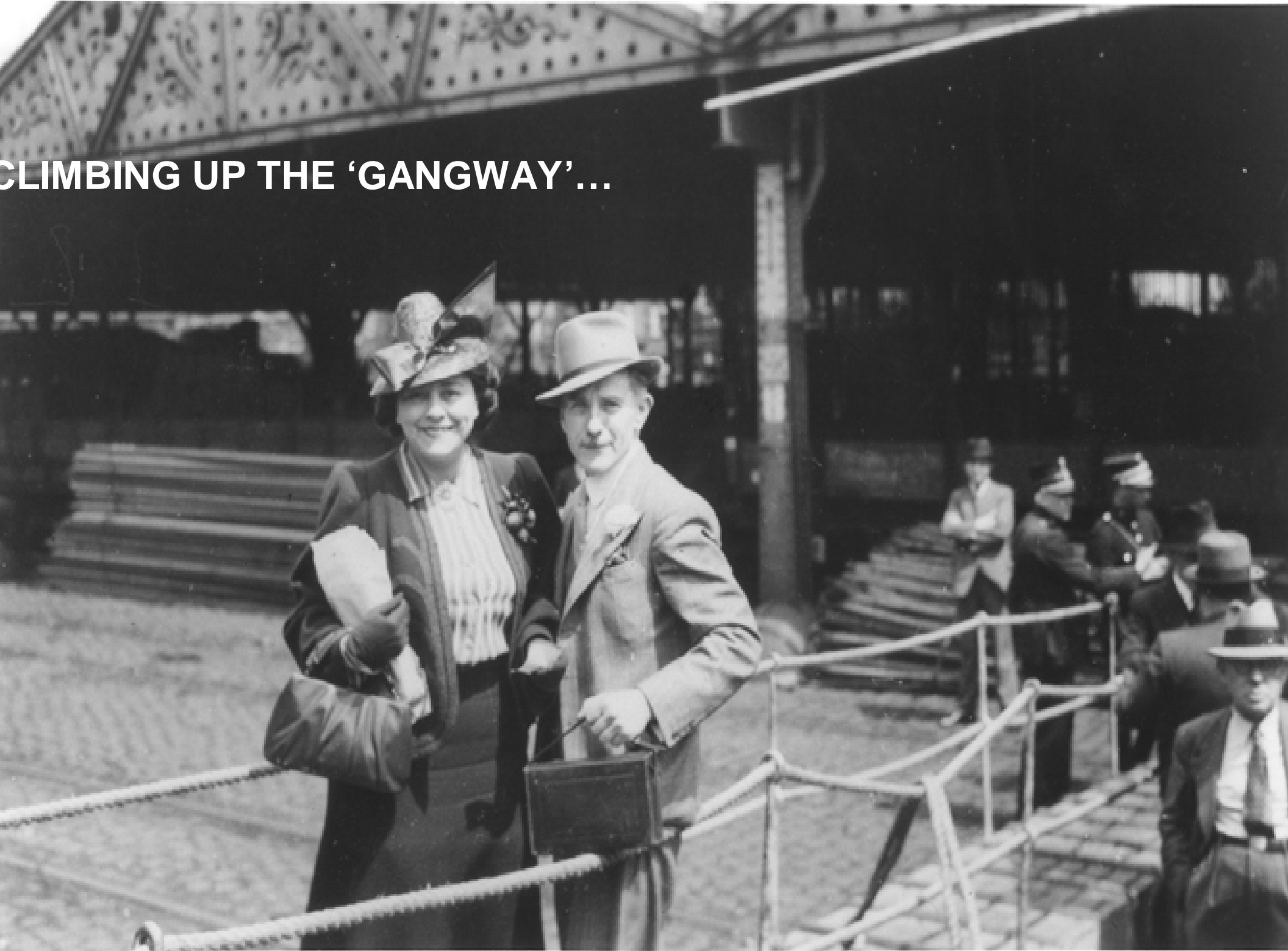
BARCELONA - many years ago



BARCELONA - TODAY



CLIMBING UP THE 'GANGWAY'...



BOARDING THE CRUISE SHIP NOW...



EXCUSE ME, A... WHAT?

Access Gangway

Passenger Ship-to-Shore Walkway

Protected Passageway

Rolling Bridge

Telescopic Gangway

Passenger Access Gangway

Enclosed Passageway

Mobile Passenger Gangway

Overhead Gangway

Passenger Boarding Bridge

Elevated Passenger *Loading* Ramp

Passenger *Loading* Bridge

GANGWAY

An opening in the railing or bulwark of a ship, as that into which a gangplank fits.

Based on the Random House Unabridged Dictionary, © Random House, Inc. 2006.

A temporary bridge for getting on and off a vessel at dockside [syn: [gangplank](#)]

WordNet® 2.1, © 2005 Princeton University

A passage along either side of a ship's upper deck.

An opening in the bulwark of a ship through which passengers may board.

The American Heritage® Dictionary of the English Language, Fourth Edition Copyright © 2000 by Houghton Mifflin Company.



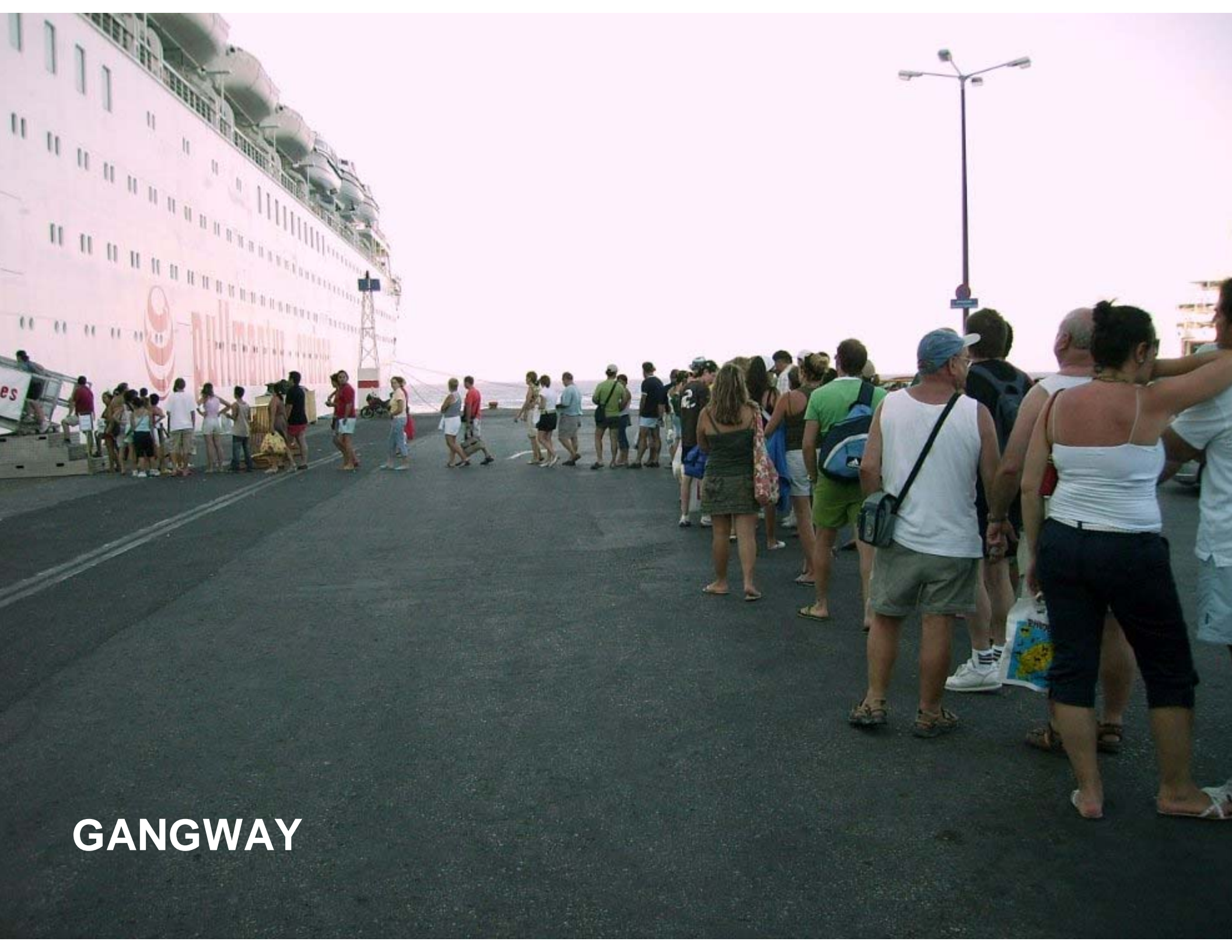
GANGWAY



GANGWAY



GANGWAY



GANGWAY



GANGWAY

GANGWAY



PASSENGER BOARDING BRIDGE



SPANISH: Pasarela de embarque de pasajeros

FRENCH: Passerelle d'embarquement de passagers

GERMAN: Passagierbrücke

ITALIAN: Pontili d'imbarco

ENGLISH: PASSENGER BOARDING BRIDGE

TEAM'S BRANDED RANGES:

- **CENTAURUS**
- **KRONUS**
- **PEGASUS**

- **THALASSA**
- **SEDNA**
- **HYDRA**

PASSENGER BOARDING BRIDGES

1. With either port authorities, cruise lines (and ferry lines), architects, consultants or construction companies we are involved in preliminary engineering discussions on the type of system required
2. Planning and designing process at our offices
3. Production at our manufacturing plants
4. Testing of the system
5. Transport of the system from factory to terminal location
6. Construction at the terminal location
7. Testing at terminal location
8. Training at location
9. Inauguration of terminal
10. Maintenance of the bridge(s)

EACH DESIGN FULLY ADAPTED to client's specification, a 'ONE OF A KIND' concept

Bridge is **FIXED** or **MOBILE**, situated **PARALLEL** or **PERPENDICULAR** to ship

STEEL STRUCTURE, with tunnels usually finished with **GLASS** sides

TEAM design concepts such as:

- **GANTRY**
- **ELEVATION**, electromechanical and/or hydraulic
- **DRIVES**, fully electromechanical
- **RAIL TRACKS** and/or **SOLID TIRES**, for support and guidance
- **BOARDING CABIN**, movable, and **RAMP**, telescopic - passively following ship's movements
- **PLC** equipped

Safety lines, nets and alarms, slip resistant surfaces, handrails, lighting, air-conditioning

COMPLY WITH INTERNATIONAL SAFETY AND SECURITY STANDARDS

**22 Passenger Boarding Bridges installed
17 currently in project**





BROOKLYN ●

PUERTO RICO ●

SOUTHAMPTON ●

BARCELONA ●

CANARY ISLANDS ●

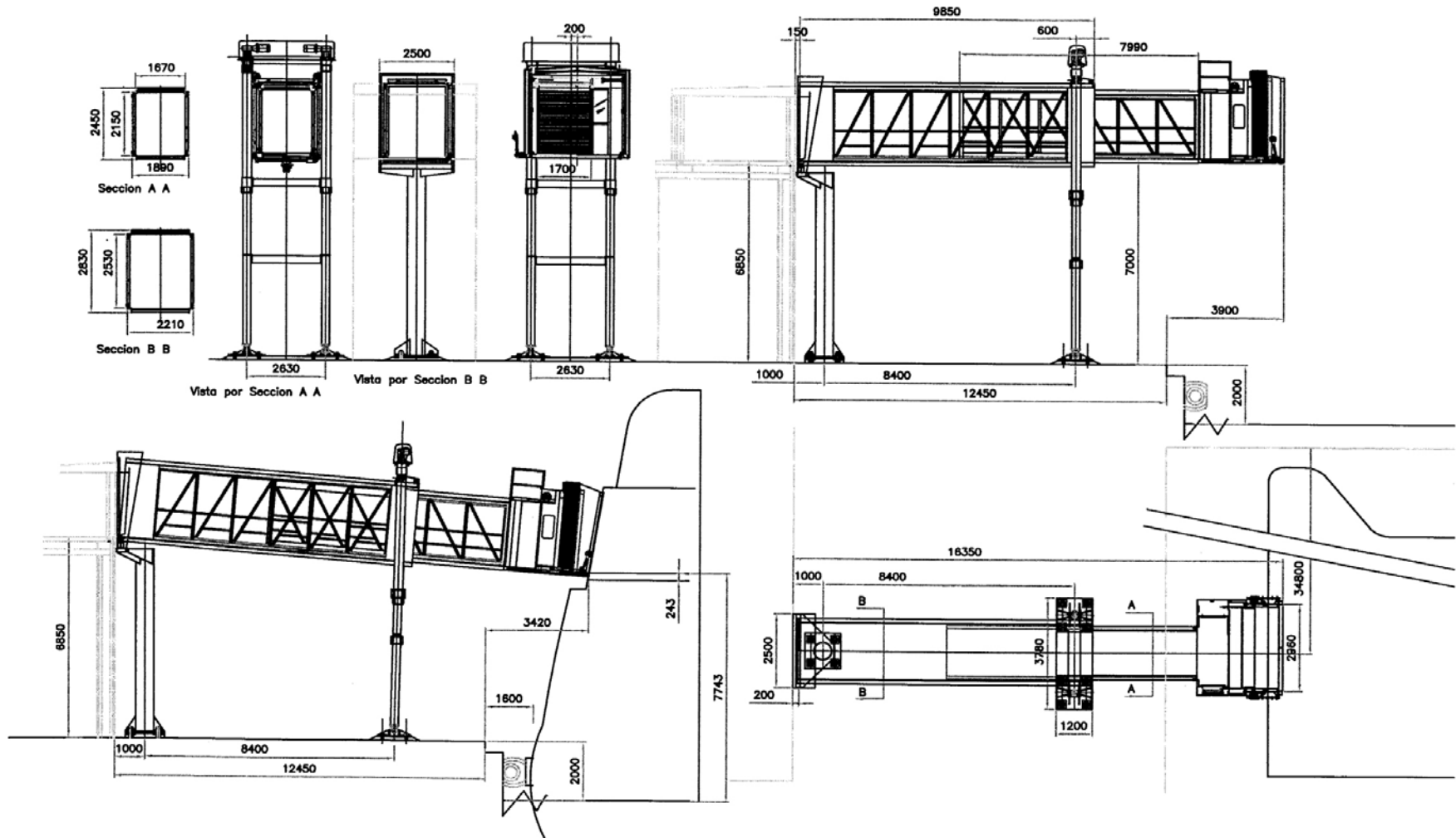
BRISBANE ●

LAS PALMAS CANARY ISLANDS

ACCIONA TRASMEDITERRANEA
FERRY TERMINAL



FIXED – PERPENDICULAR TO VESSEL SINGLE STRUCTURE – ONE OR MORE TELESCOPIC TUNNEL(S)



'CENTAURUS' – LAS PALMAS, CANARY ISLANDS

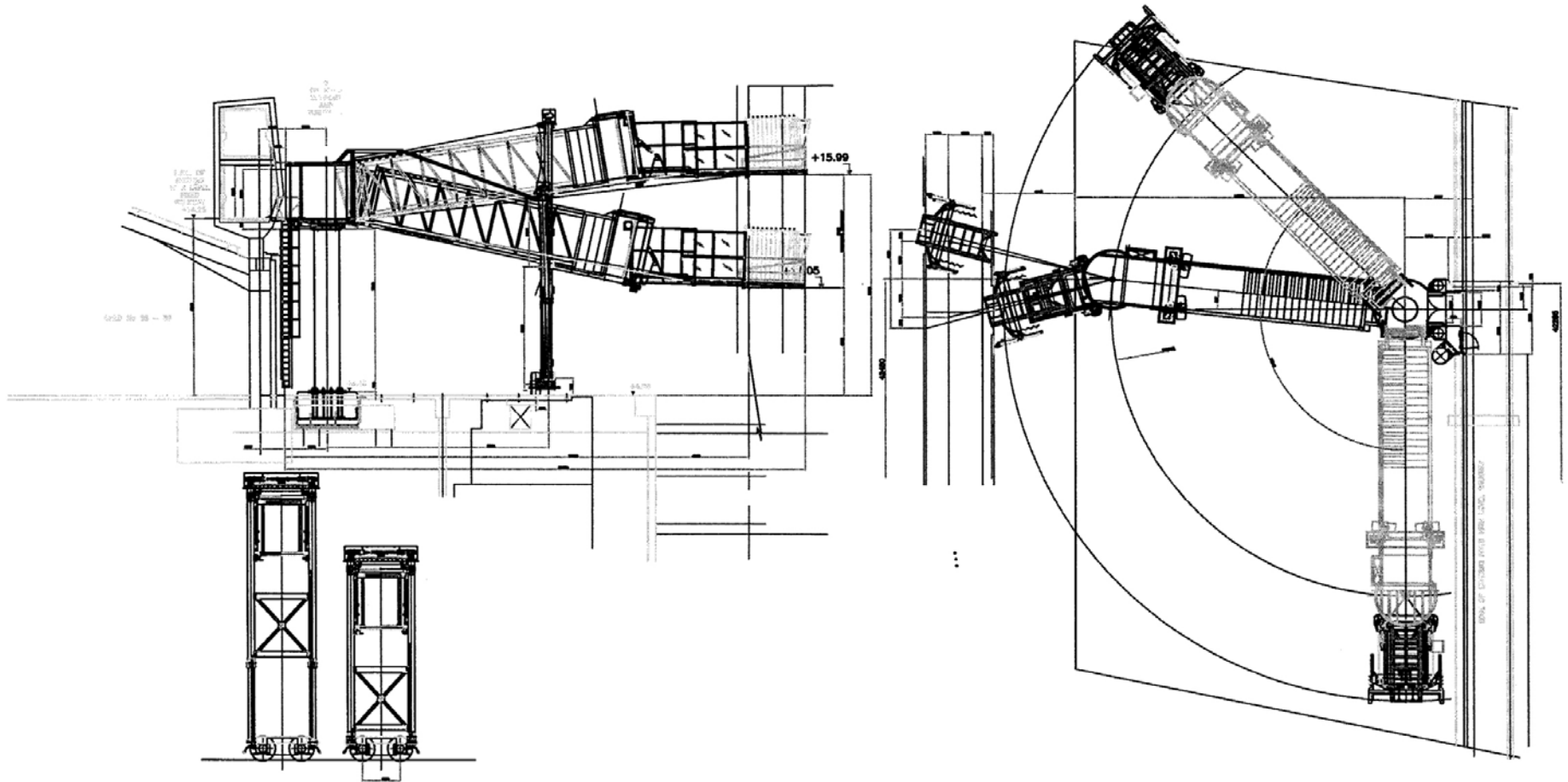


SOUTHAMPTON UNITED KINGDOM

ASSOCIATED BRITISH PORTS
QUEEN ELISABETH II CRUISE TERMINAL



MOVABLE – PERPENDICULAR TO VESSEL SINGLE STRUCTURE – RADIAL – ONE TUNNEL



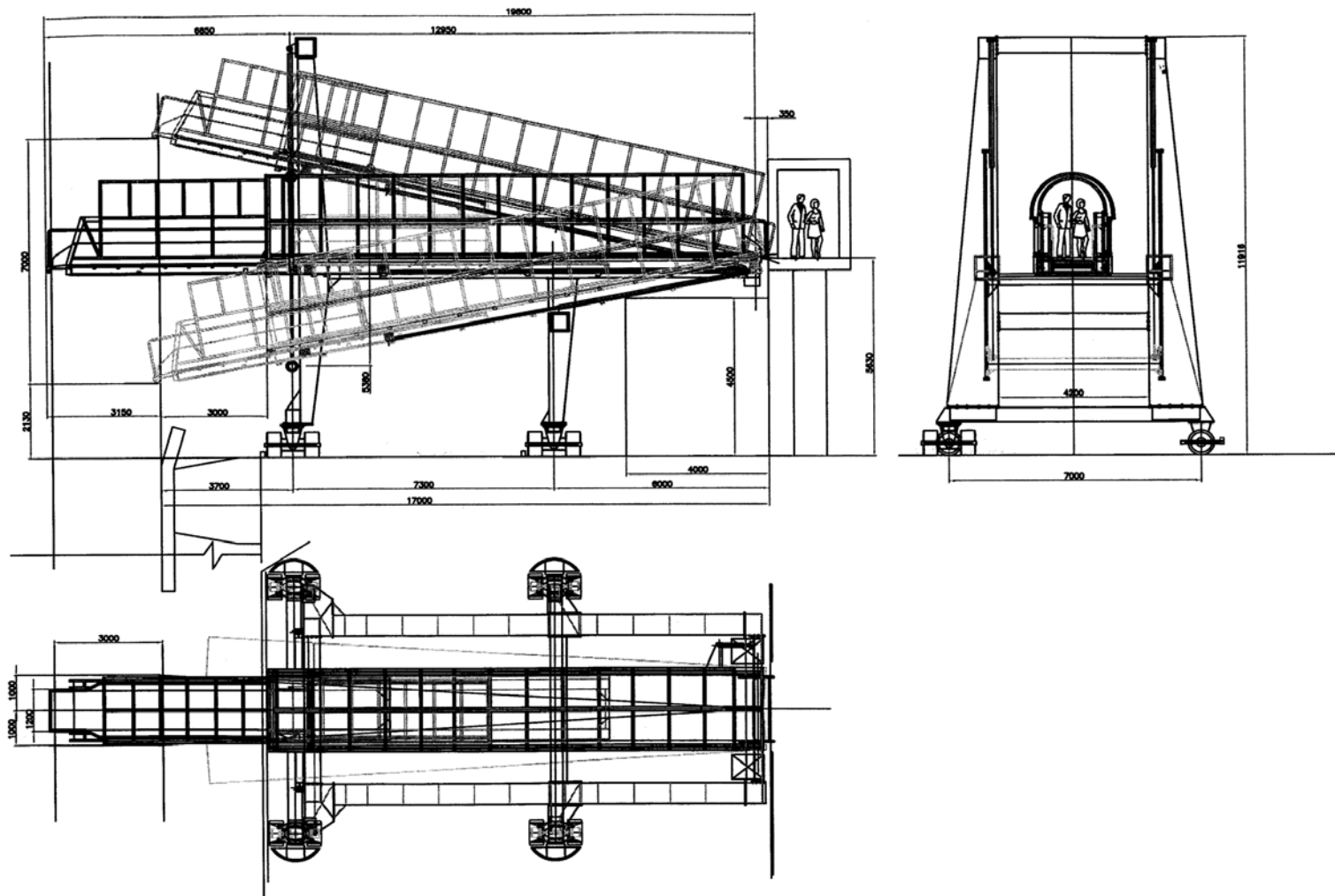


BRISBANE AUSTRALIA

MULTIPLEX
PORTSIDE WHARF CRUISE TERMINAL

MULTIPLEX

MOVABLE – PERPENDICULAR TO VESSEL
SINGLE STRUCTURE – ONE OR MORE TELESCOPIC TUNNELS
CABIN WITH TELESCOPIC RAMP – RAILS OR SOLID BOGIES



THE BOARDING COMPANY

'PEGASUS' – BRISBANE, AUSTRALIA

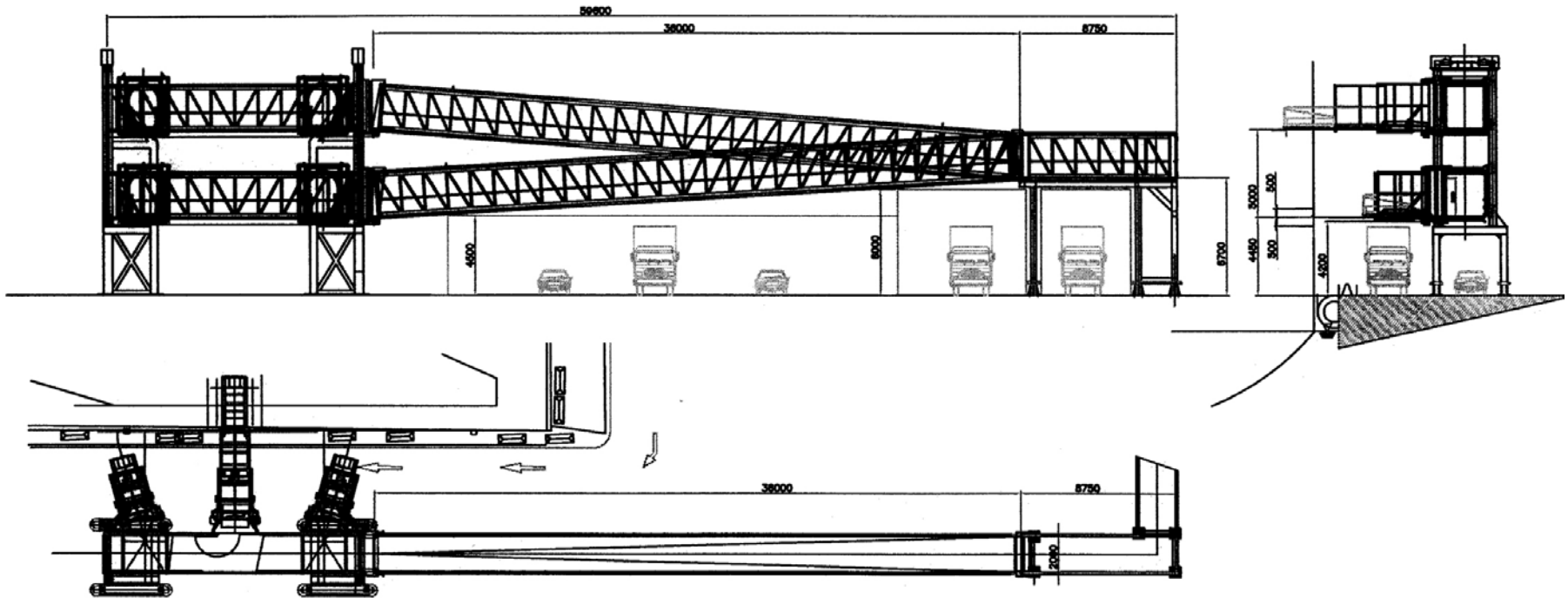


BARCELONA SPAIN

BALEARIA
FERRY TERMINAL



FIXED – PARELLEL TO VESSEL
ELEVATING TUNNELS – SLIDING CABIN IN MAIN TUNNEL AND BETWEEN 2 LIFTING FRAMES
CABIN WITH TELESCOPIC RAMP



THE BOARDING COMPANY

'THALASSA' – BARCELONA, SPAIN

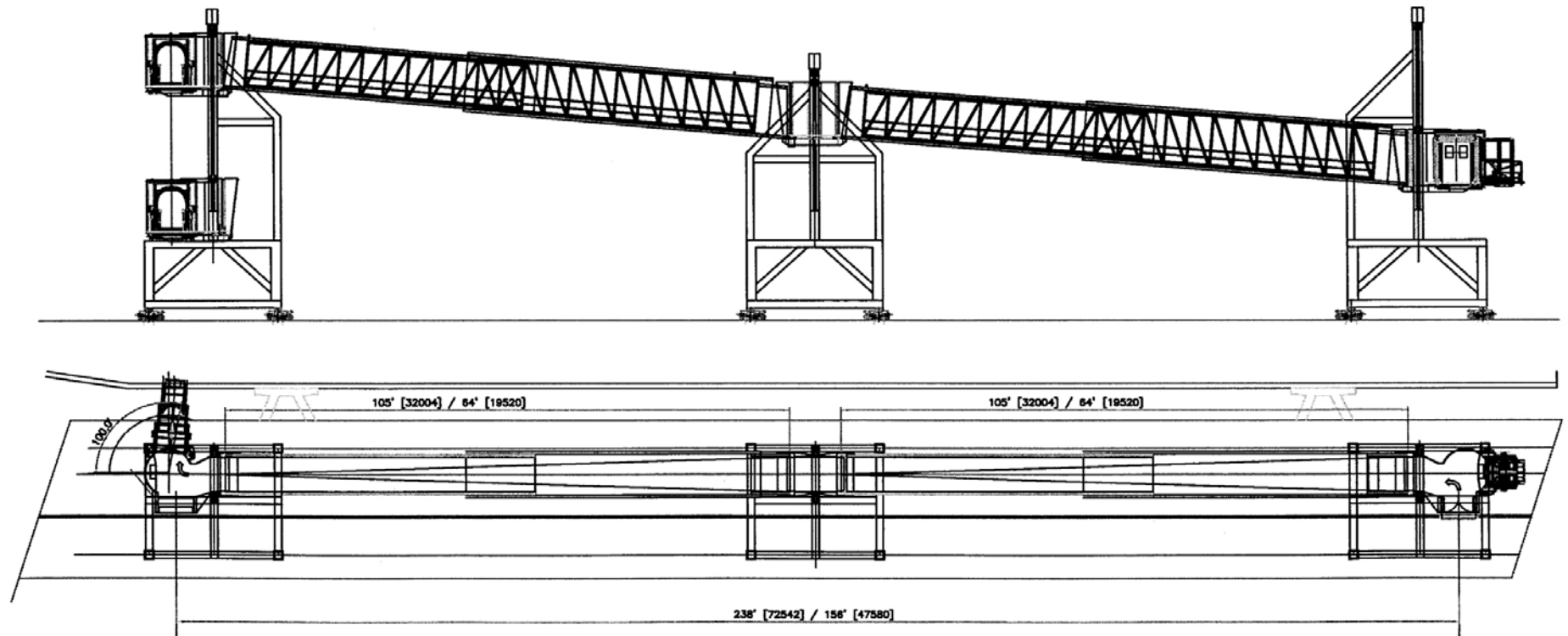


SAN JUAN PUERTO RICO

CARNIVAL
CRUISE TERMINAL

 **Carnival.**

- MOVABLE – PARELLEL TO VESSEL
- MULTIPLE STRUCTURE – TUNNELS IN ‘U’ OR ‘Z’ SHAPE
- LIFTING FRAMES + CABIN WITH TELESCOPIC RAMP – RAILS OR SOLID BOGIES



THE BOARDING COMPANY

'SEDNA' – SAN JUAN, PUERTO RICO



BROOKLYN, NY USA

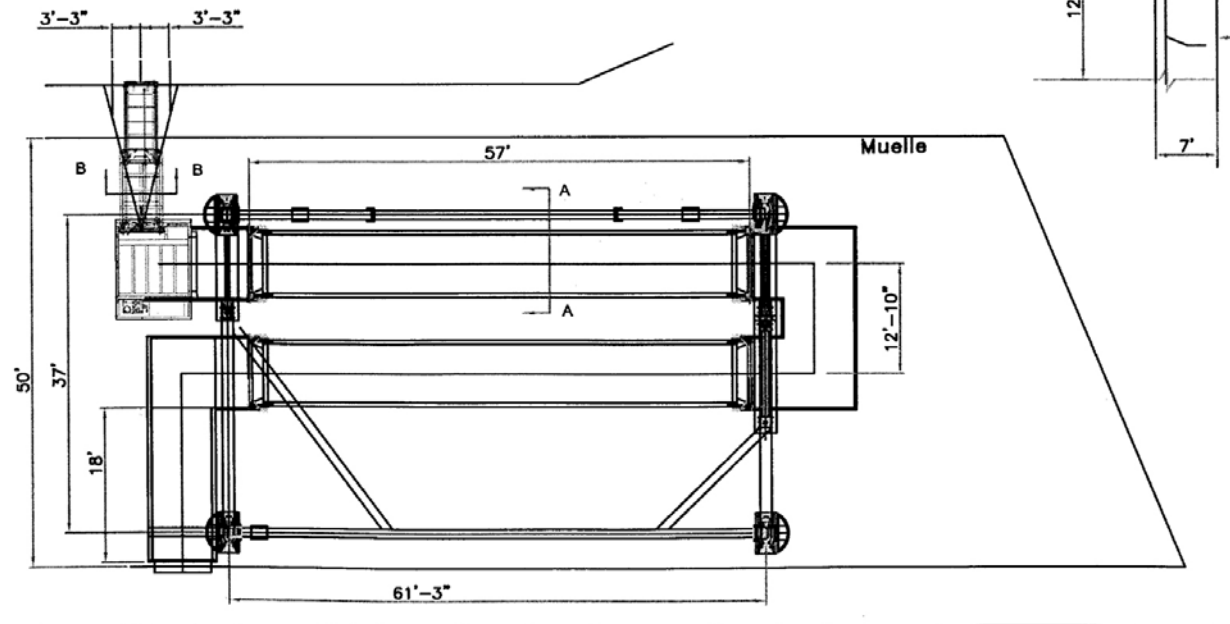
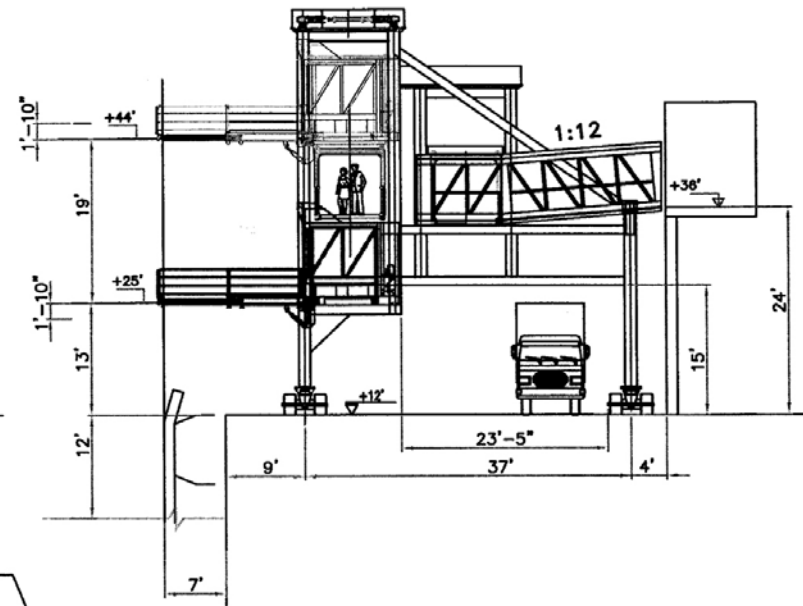
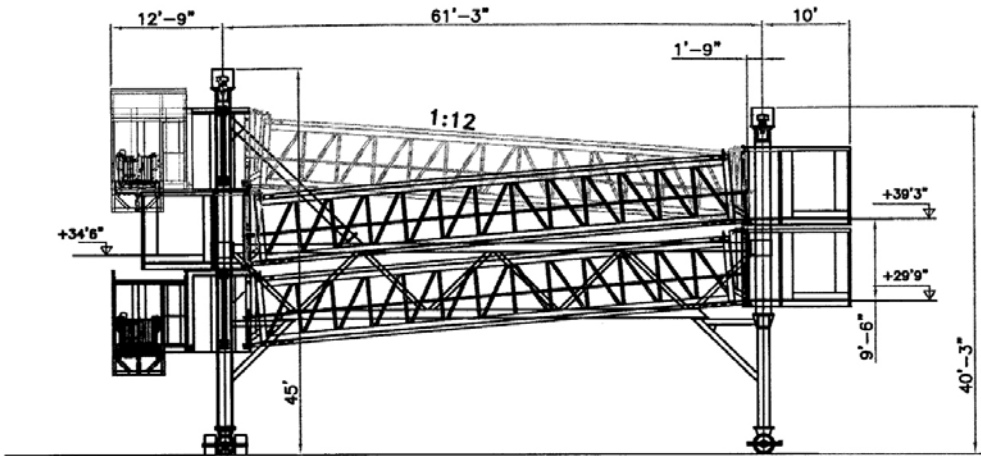
NEW YORK – ECONOMIC DEVELOPMENT CORP.
CRUISE TERMINAL



NYCRUISE

BROOKLYN

MOVABLE – PARALLEL TO VESSEL
SINGLE STRUCTURE – TUNNELS IN 'U' OR 'Z' SHAPE – LIFTING FRAMES
CABIN WITH TELESCOPIC RAMP – RAILS OR SOLID BOGIES





THE BOARDING COMPANY

'HYDRA' – BROOKLYN, NEW YORK





THE BOARDING COMPANY

'HYDRA' – BROOKLYN, NEW YORK



THE BOARDING COMPANY

'HYDRA' – BROOKLYN, NEW YORK



THANK YOU VERY MUCH FOR YOUR ATTENTION

FOR MORE INFORMATION:

WWW.TEAMCOMPANY.COM



c/ Buenos Aires 1
08029 Barcelona (SPAIN)

Tel.: +34 902 300 601
+34 933 632 294

Fax: +34 933 632 295

team@teamcompany.com