

Port Performance Statistics

- *Fixing America's Surface Transportation ("FAST") Act* was signed into law on December 4, 2015.
 - Section 6018 established the *Port Performance Freight Statistics Program* to measure the throughput and capacity of the largest maritime ports.
 - The Bureau of Transportation Statistics is named in the FAST Act as the implementing agency. BTS will be doing this with the support of the other DOT Operating Administrations, and the Office of the Secretary.

Annual Reporting

- The FAST Act requires the BTS Director to perform several tasks, including annual reporting on the throughput and capacity of the 25 largest maritime ports in three categories:
 - Containers,
 - Tonnage, and
 - Dry bulk cargo.

Port Performance Freight Statistics Working Group

- In addition, the FAST Act requires the BTS Director establish a Port Performance Freight Statistics Working Group, which has been designated a Federal Advisory Committee (FAC).
- The Working Group is charged with providing recommendations to the BTS Director on nationally consistent and commonly accepted industry standards for port performance measures on capacity and throughput. Per the FAST Act, these recommendations are due on December 4, 2016.
- The 1st edition of the annual report on Port Performance is due on January 15, 2017. Therefore, BTS will not have time to fully incorporate recommendations received from the Working Group.

- **Status of Work – Port Performance Working Group**
-
- Nominations for Working Group representatives closed on March 24, 2016. BTS is working with the Office of the Secretary on membership recommendations, and will announce members later this spring.
-
- You will likely know that BTS published a *Federal Register* notice on February 23, 2016 announcing establishment of the Working Group and seeking nominations publicly for Working Group representatives from freight industry stakeholders.
<https://federalregister.gov/a/2016-03702>
-

- Working Group membership as set forth in the FAST Act includes the following Federal partners:
 - operating administrations of the Department of Transportation;
 - Federal Aviation Administration
 - Federal Highway Administration
 - Federal Motor Carrier Safety Administration
 - Federal Railroad Administration
 - Federal Transit Administration
 - Maritime Administration
 - Pipeline and Hazardous Materials Safety Administration
 - Saint Lawrence Seaway Development Corporation
 - the Coast Guard;
 - the Federal Maritime Commission;
 - U.S. Customs and Border Protection;
 - the Marine Transportation System National Advisory Council;
 - the Army Corps of Engineers;
 - the Bureau of Labor Statistics;
 - the National Freight Advisory Council;
 - the Maritime Advisory Committee for Occupational Safety and Health; and
 - the Advisory Committee on Supply Chain Competitiveness.

- And the following non-Federal partners:
 - 1 representative from the rail industry;
 - 1 representative from the trucking industry;
 - 1 representative from the maritime shipping industry;
 - 1 representative from a labor organization for each industry [rail, trucking, and maritime shipping];
 - 1 representative from the International Longshoremen's Association;
 - 1 representative from the International Longshore and Warehouse Union;
 - 1 representative from a port authority;
 - 1 representative from a terminal operator; and
 - Representatives of the Transportation Research Board of the National Academies of Sciences, Engineering, and Medicine.

Open for Input

- BTS welcomes everyone's answers to the questions above as well as their suggestions on nationally consistent data sources and potential port performance measures, especially for throughput and capacity.
- Please send these to portstatistics@bts.gov. BTS has been collecting input from many stakeholders, and invites your comments as well.



Performance Indicators for Containerships on West Coast 1st QTR 2015

Use of Commercial AIS sources

Harbors & Navigation Committee Meeting
March 30, 2016





Introduction

- Modal administration under the U.S. Department of Transportation
- “Advocate” for the U.S. Merchant Marine and U.S. Maritime Industry
 - Marine Highway Program
 - Strong Ports/Port Talk
 - Maritime Security Program (MSP)
 - Cargo Preference/Government-Impelled Cargo
 - U.S. Merchant Marine Academy/State Maritime Academies
 - Title XI Ship Financing, Small Shipyard Grants, TIGER Grants
 - Ready Reserve Fleet/National Defense Reserve Fleet



What does MARAD use AIS data for?



- MARAD Office of Policy and Plans = MARAD data shop
- Generate statistical reports – Vessel Calls Report
 - In 2013, approximately 8,255 cargo-carrying vessels made 74,188 vessel calls across 85 U.S. ports and terminals.
- Respond to developing situations – West Coast congestion/labor negotiation



During this time



- West Coast anchorage areas began to fill up to capacity with container ships.
 - Seldom used anchorage areas in Puget Sound were being utilized
 - USCG Sector San Francisco placed restrictions on the San Francisco General anchorage
 - Ships were anchoring in San Pedro Bay emergency anchorages
 - Ships started to drift & hold station offshore



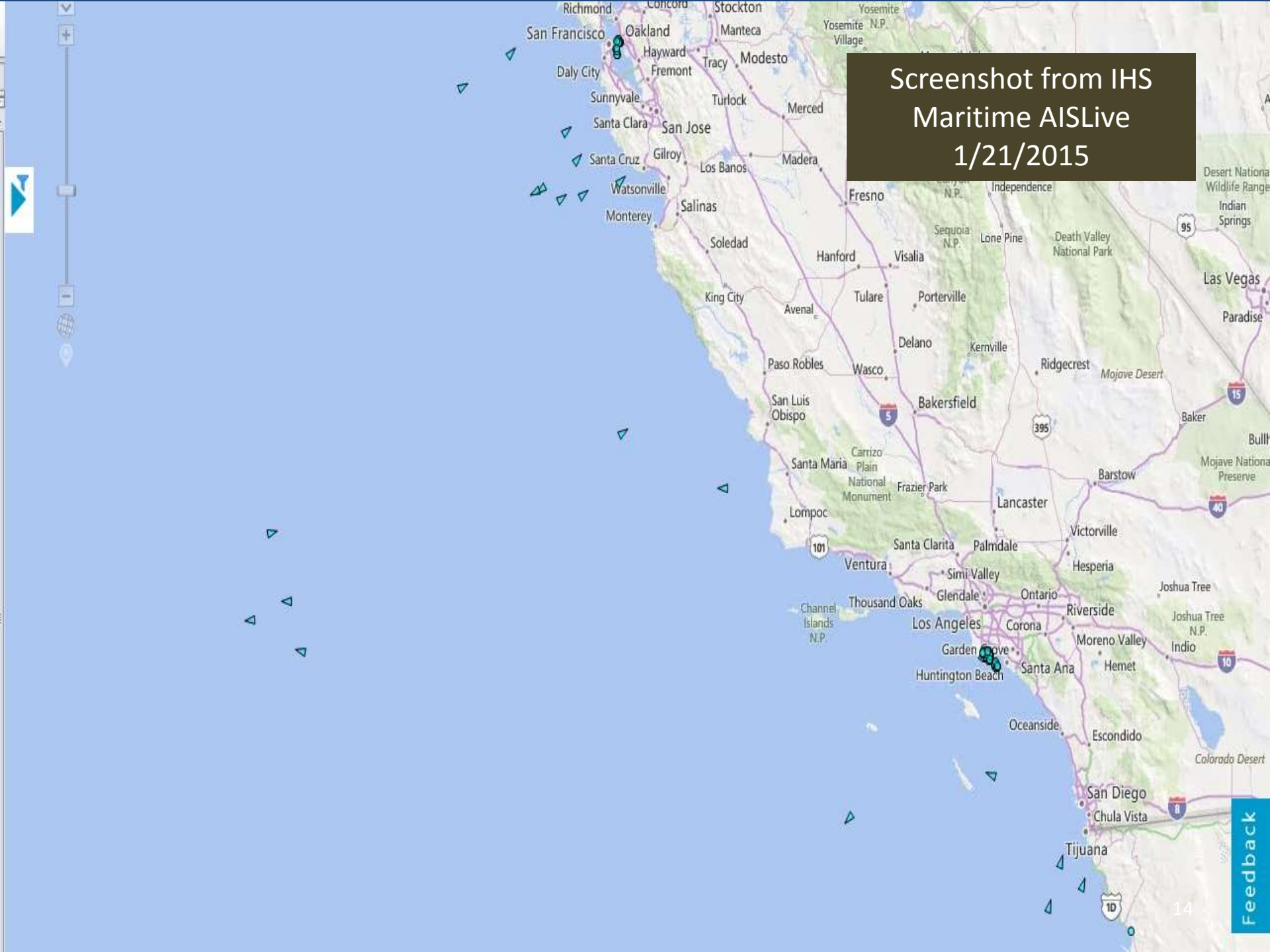


MARAD use of AIS-based systems



- MARAD started tracking container ships on 1/15/2015
- MARAD had to utilize its subscription-based, terrestrial AIS system (IHS Maritime's AISLive) to best determine the tactical situation offshore.
- This process was manual, reactive, and iterative.

Screenshot from IHS
Maritime AISLive
1/21/2015



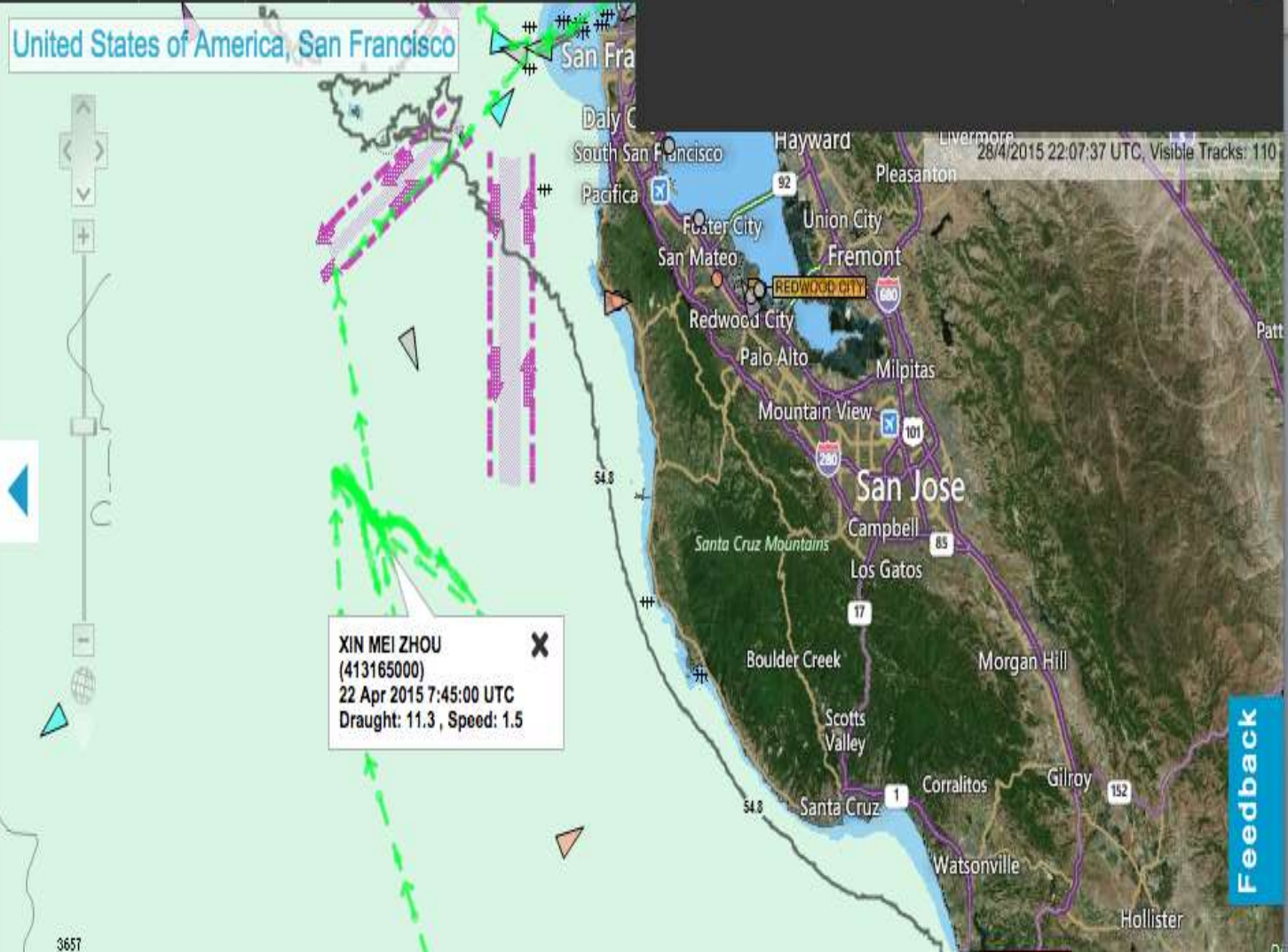
Details < Results 1 of 1

XIN MEI ZHOU
Container Ship (Fully Cellular)

WatchList
 MMSI 413165000
 Callsign BPKC
 IMO 9337925
 Last seen 2 days ago
 Last port Oakland
 Destination Shy 8 days 20 hours
 ETA 7 May 2015 19:00 UTC
 Lat Long 38°35.462'N 123°45.575'W
 Last seen at 26 Apr 2015 18:05:13 UTC
 Heading 322°
 Speed 15.6 knots (service 25.4 knots)
 Status Under way using engine



- Details
- Results
- WatchList
- Filter Ships
- Maps & Layers



Feedback

IMO	TEU	Ship Name	Alliance	Destination	Last Port	First Report Dat	Time Start Tracked Offshore (UTC)	Time Depart Offshore	Days Spent Offshore	Berth
9308508	9,440	COSCO BEIJING	CKYHE ALLIANCE - MD1/PM1	Long Beach	Busan	3/2/15	3/2/15 12:00	3/2/15 20:45	0.36	LB 270
9424912	6,720	MOL MAJESTY	G6 ALLIANCE/EVERGREEN - SVS/AI	Oakland	Los Angeles	3/24/15	3/24/15 6:20	3/24/15 23:15	0.70	oak 56
9074535	5,108	APL KOREA	G6 ALLIANCE - CC3	Oakland	Los Angeles	3/8/15	3/8/15 6:59	3/9/15 0:00	0.71	oak 56
9595486	8,480	EVER LIBRA	EVERGREEN - CPS	Oakland	Los Angeles	1/29/15	1/29/15 5:58	1/30/15 2:30	0.86	OAK 36
9077123	5,108	APL THAILAND	G6 ALLIANCE - CC3	Oakland	Los Angeles	1/27/2015	1/26/15 16:00	1/27/15 20:45	1.20	OAK 59
9475648	6,720	MOL MANEUVER	G6 ALLIANCE - SE2	Oakland	Los Angeles	3/18/15	3/17/15 16:13	3/19/15 0:30	1.35	OAK 32
9337925	8,530	XIN MEI ZHOU	CSC/LUASC/YANG MING - AAS2/AV	Oakland	Los Angeles	4/2/15	4/2/15 8:00	4/22/15 16:30	1.35	OAK 25-26
9262704	6,490	NYK AQUARIUS	G6 ALLIANCE/HANJIN - SE3/PSG	Oakland	Los Angeles	3/3/15	3/3/15 5:00	3/4/15 13:45	1.36	oak 58
9301847	4,250	RIO DE JANEIRO EXPF	HAPAG-LLOYD/HAMBURG-SUD - M	Oakland	Portland	3/3/15	3/2/15 13:44	3/3/15 23:15	1.40	oak 23
9629902	8,560	MOL COMMITMENT	G6 ALLIANCE - SE2	Oakland	Los Angeles	3/13/15	3/13/15 12:30	3/15/15 0:30	1.50	OAK 32
9350020	5,890	APL NEW JERSEY	G6 ALLIANCE - SE1	Los Angeles	Lazaro Cardenas	1/21/15	1/21/15 13:15	1/23/15 3:00	1.57	LA 304
9281279	5,060	MSC LISA	MSC - CALIFORNIA EXPRESS	Oakland	Seattle	3/9/15	3/8/15 21:14	3/10/15 11:30	1.59	OAK 25-26
9300441	7,024	EVER STRONG	EVERGREEN - TPS	Oakland	Los Angeles	1/23/15	1/23/15 10:15	1/25/15 1:00	1.61	OAK 36
9398383	11,310	MSC LUCIANA	CMA-CGMM/MS - BOHAINOX	Los Angeles	China	3/4/15	3/3/15 22:15	3/5/15 13:30	1.64	la 401
9410806	11,356	CMA CGM LYRA	CMA-CGMM/MS - PEARL RIVER	Oakland	Long Beach	1/17/15	1/17/15 6:15	1/19/15 1:15	1.79	OAK 57
9463281	4,430	BALTIMORE BRIDGE	CKYH-GREEN ALLIANCE - CALCO-E	Long Beach	China	2/15/2015	2/15/2015 4:57	2/17/15 1:00	1.84	LA 236
9300427	7,024	EVER SUPERB	EVERGREEN - TPS	Oakland		2/3/2015	2/3/15 4:44 AM	2/5/15 1:00	1.84	OAK 36
9300427	7,024	EVER SUPERB	EVERGREEN - TPS	Tacoma	Oakland	2/12/2015	2/12/2015 0:29	2/14/15 3:15	2.12	TAC 1
9300415	7,024	EVER SMILE	99 - Not known	Oakland	Los Angeles	3/9/15	3/8/15 18:02	3/10/15 23:00	2.21	OAK 36
9293806	8,070	ITAL CONTESSA	EVERGREEN - CPS	Oakland	Los Angeles	3/2/15	3/2/15 7:45	3/4/15 14:30	2.28	oak 37
9293820	8,070	HATSU CRYSTAL	EVERGREEN - TPS	Oakland	Los Angeles	3/17/2015	42079.65625	3/18/15 23:15	2.31	OAK 56
9074391	5,108	APL JAPAN	G6 ALLIANCE - CC3	Oakland	Los Angeles	3/2/15	3/2/15 12:15	3/4/15 21:00	2.36	oak 57
9193290	4,890	TOKYO EXPRESS	G6 ALLIANCE - PA1	Oakland	Seattle	2/28/15	2/28/15 13:44	3/3/15 0:44	2.46	OAK 58
9332884	6,350	HYUNDAI LONG BEACI	G6 ALLIANCE - CC1	Oakland	Long Beach	3/15/15	3/15/15 0:30	3/17/15 13:30	2.54	OAK 32
9074389	5,108	APL CHINA	G6 ALLIANCE - CC3	Los Angeles	Yokohama	3/16/15	3/15/15 22:30	3/18/15 12:45	2.59	LA 304
9337664	4,880	NYK DELPHINUS	G6 ALLIANCE - NCE	Oakland	Los Angeles	3/1/15	2/28/15 23:00	3/3/15 13:30	2.60	oak 55
9604160	8,480	EVER LIBERAL	EVERGREEN - CPS	Oakland	Los Angeles	2/7/15	2/7/15 11:45	2/10/15 4:30	2.70	OAK 36
9604172	8,480	EVER LUCKY	EVERGREEN - CPS	Oakland	Los Angeles	3/6/15	3/6/15 5:16	3/9/15 0:30	2.80	oak 35
9300465	7,024	EVER SAFETY	EVERGREEN - TPS	Oakland	Los Angeles	3/4/15	3/3/15 17:56	3/6/15 14:00	2.84	oak 36
8618293	4,300	MSC VERONIQUE	MSC - CALIFORNIA EXPRESS	Los Angeles	Oakland	4/18/15	4/18/15 4:15	4/21/15 0:59	2.86	OAK 23
9293818	8,070	EVER CONQUEST	EVERGREEN - CPS	Oakland	Los Angeles	2/24/15	2/23/15 16:45	2/26/15 14:15	2.90	oak 35
9247766	6,490	NYK ATHENA	G6 ALLIANCE - CC4	Oakland	Los Angeles	2/27/15	2/27/15 4:00	3/2/15 2:45	2.95	oak 55
9218674	5,510	APL HOLLAND	G6 ALLIANCE - CC3	Oakland	Los Angeles	2/26/15	2/25/15 14:16	2/28/15 16:30	3.09	oak 59
9196967	5,652	EVER UNICORN	EVERGREEN - UAM	Tacoma	Busan	3/16/15	3/16/15 5:45	3/19/15 9:15	3.15	TAC 2
9337626	4,880	NYK CONSTELLATION	G6 ALLIANCE - PA1	Oakland	Los Angeles	2/25/15	2/25/15 10:28	2/28/15 14:30	3.17	oak 56
9300439	7,024	EVER STEADY	COSCO/EVERGREEN - FRS	Oakland	Los Angeles	3/13/15	3/12/15 13:50	3/16/15 0:15	3.43	OAK 36
9595450	8,480	EVER LASTING	EVERGREEN - CPS	Oakland	Los Angeles	3/10/15	3/9/15 14:45	3/13/15 1:30	3.45	OAK 36
9305647	6,760	HYUNDAI SHANGHAI	G6 ALLIANCE - CC1	Oakland	Los Angeles	1/29/15	1/29/2015	2/1/2015 14:30	3.50	OAK 31
9462043	10,700	APL BARCELONA	G6 ALLIANCE - SC1	Los Angeles	China	3/9/15	3/8/15 18:45	3/12/15 13:00	3.76	LA 302



Offshore Wait Times



- A total of 800+ days spent by container ships waiting offshore for LA/LB and SF (1/15 – 4/21)

Vessel	Offshore Start	Offshore End	Total Time	Destination
MAERSK SYDNEY	2/20/15 2245	3/16/15 0130	23.1 days	Long Beach
MAERSK SINGAPORE	2/3/15 1900	3/5/15 1600	29.8 days	Long Beach

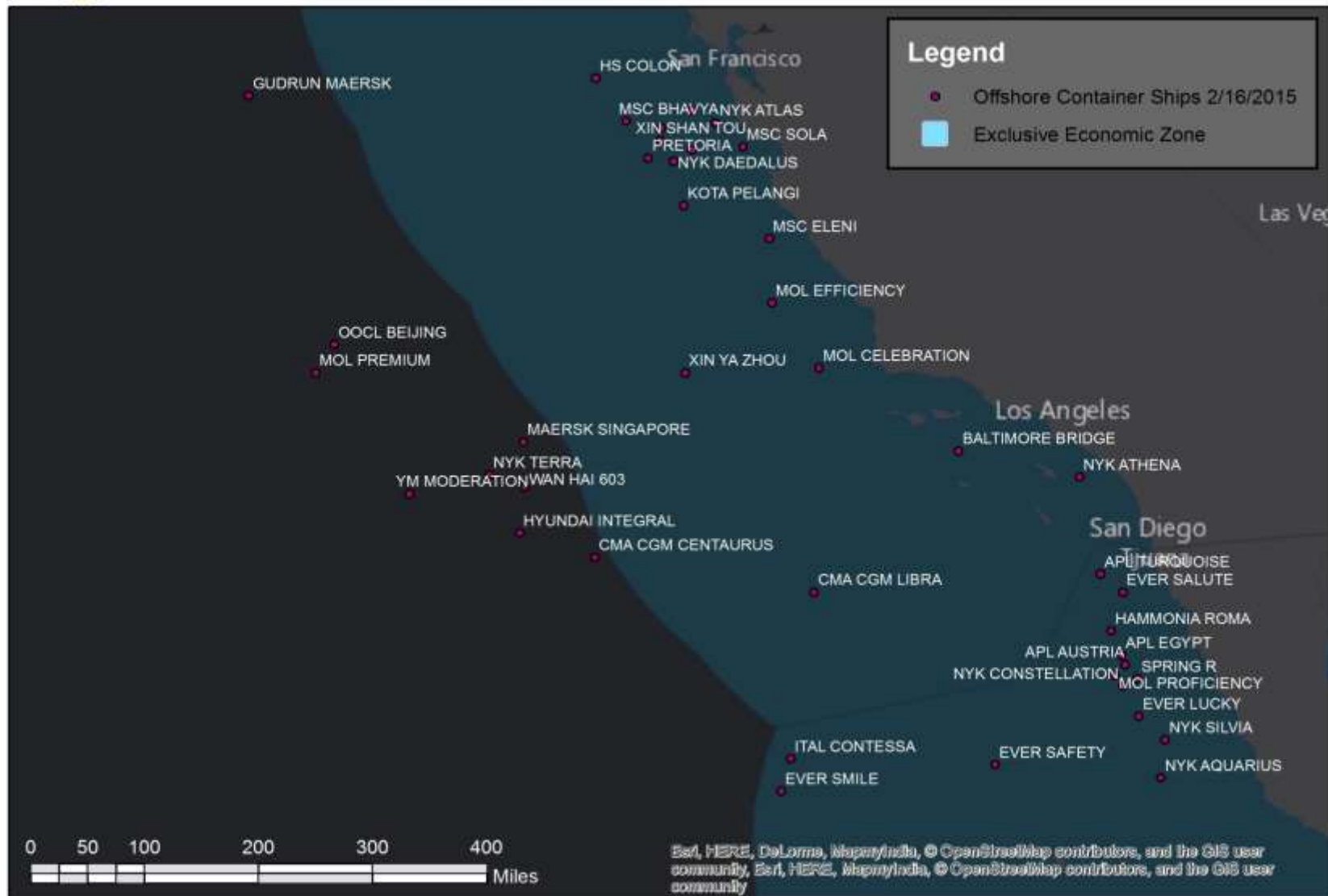
Port	Minimum	Maximum	Average	Sum
Los Angeles	1.6	18.5	8.1	291.5
Oakland	.7	19.5	5.9	443.2
Long Beach	.4	29.9	12.7	76.0
			Total	810.6



Offshore Container Ships along the West Coast of the United States

Updated 2/16/2015 0930 EST

There are currently 37 container ships holding position off the West Coast of the United States, representing 244,646 TEUs of carrying capacity.





Anchorage Wait Times



A total of 2,000+ days were spent by container ships at anchor on the West Coast. (1/15 – 4/21)

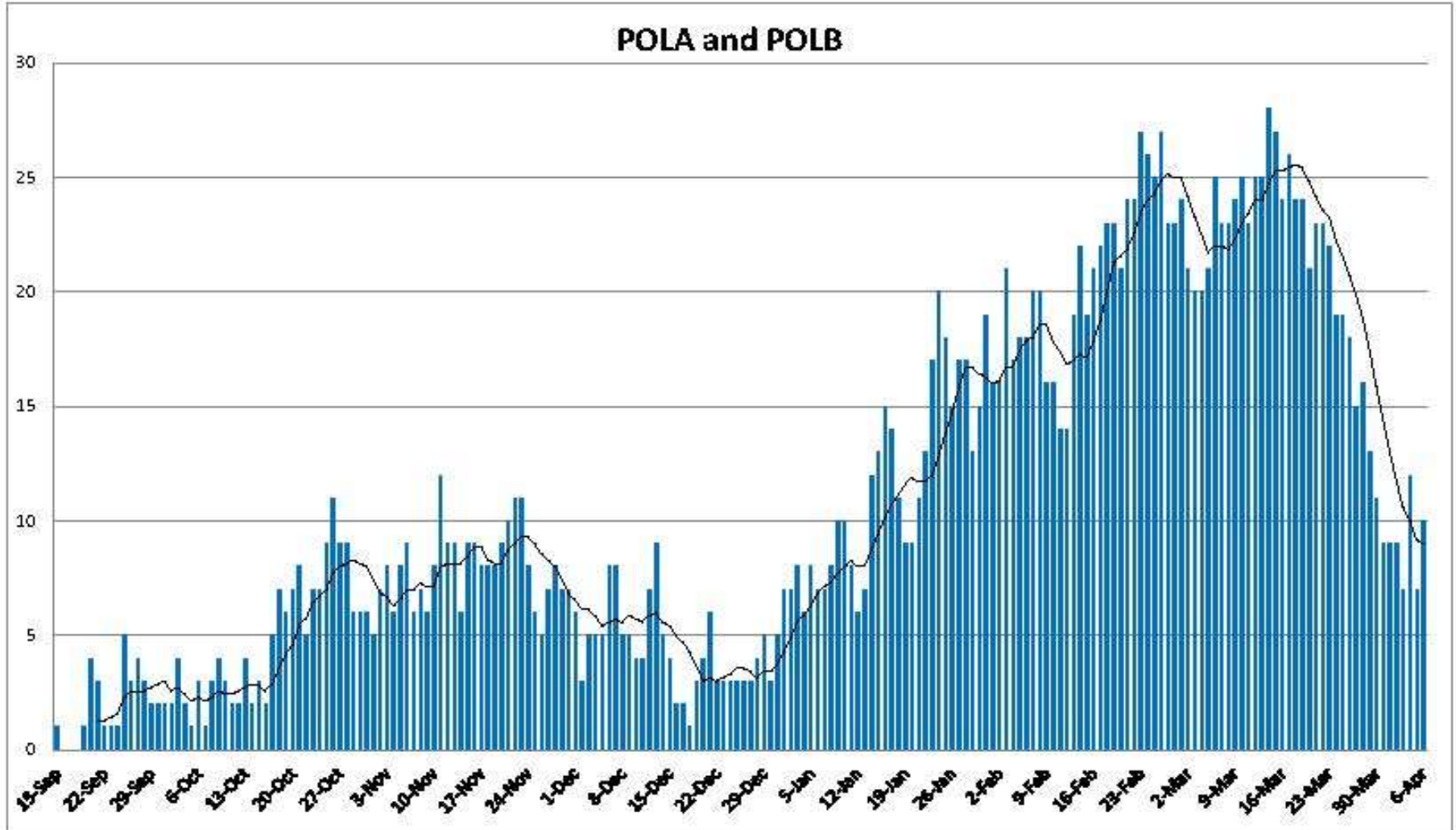
Vessel	Anchorage	Anchored	Weighed	Total Time
SPRING R	Los Angeles	1/28/2015 1100	2/24/2015 0000	26.5 days
YM FOUNTAIN	Manchester	1/25/2015 1645	2/21/2015 0200	26.4 days

Anchorage	Maximum	Average	Sum
San Pedro	26.5	6.4	1,540
San Francisco	23.8	5.0	150
Puget Sound	26.4	7.4	361
		Total	2,051 days



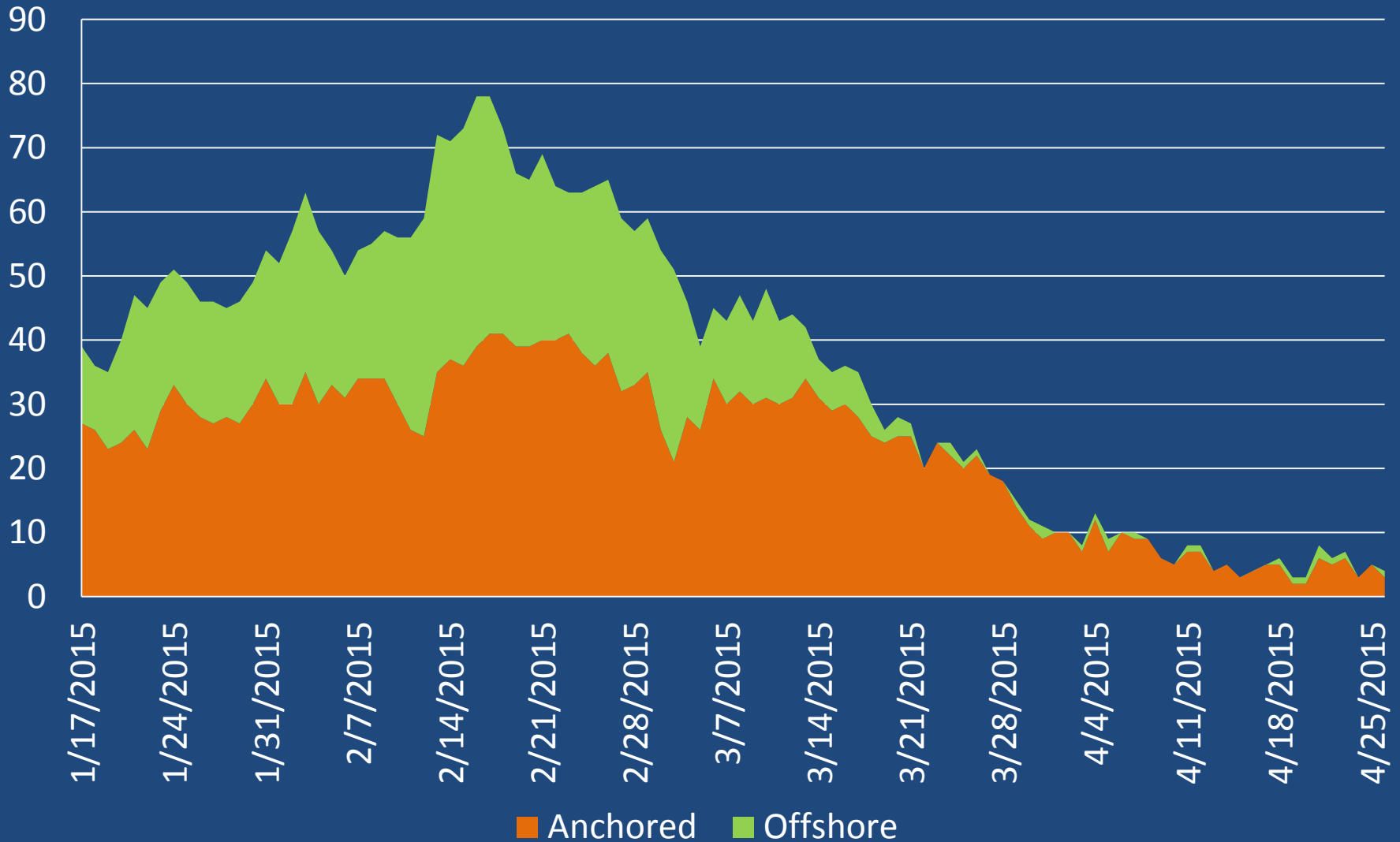
Port of
LONG BEACH
The Green Port

VESSELS AT A GLANCE: Container Ships at Anchor



Source: Marine Exchange of Southern California
Monday, April 6, 2015

West Coast Container Ship Congestion Chart (1/17/15 – 4/26/2015)





After Action



- These indicators were not “nationally consistent” due to various different and dynamic factors at each port.
- They did point us to the potential for consistent time, velocity, and reliability measures.