



NAVIGATION UPDATES



Improving Products and Services for the
Nation's Informational Infrastructure

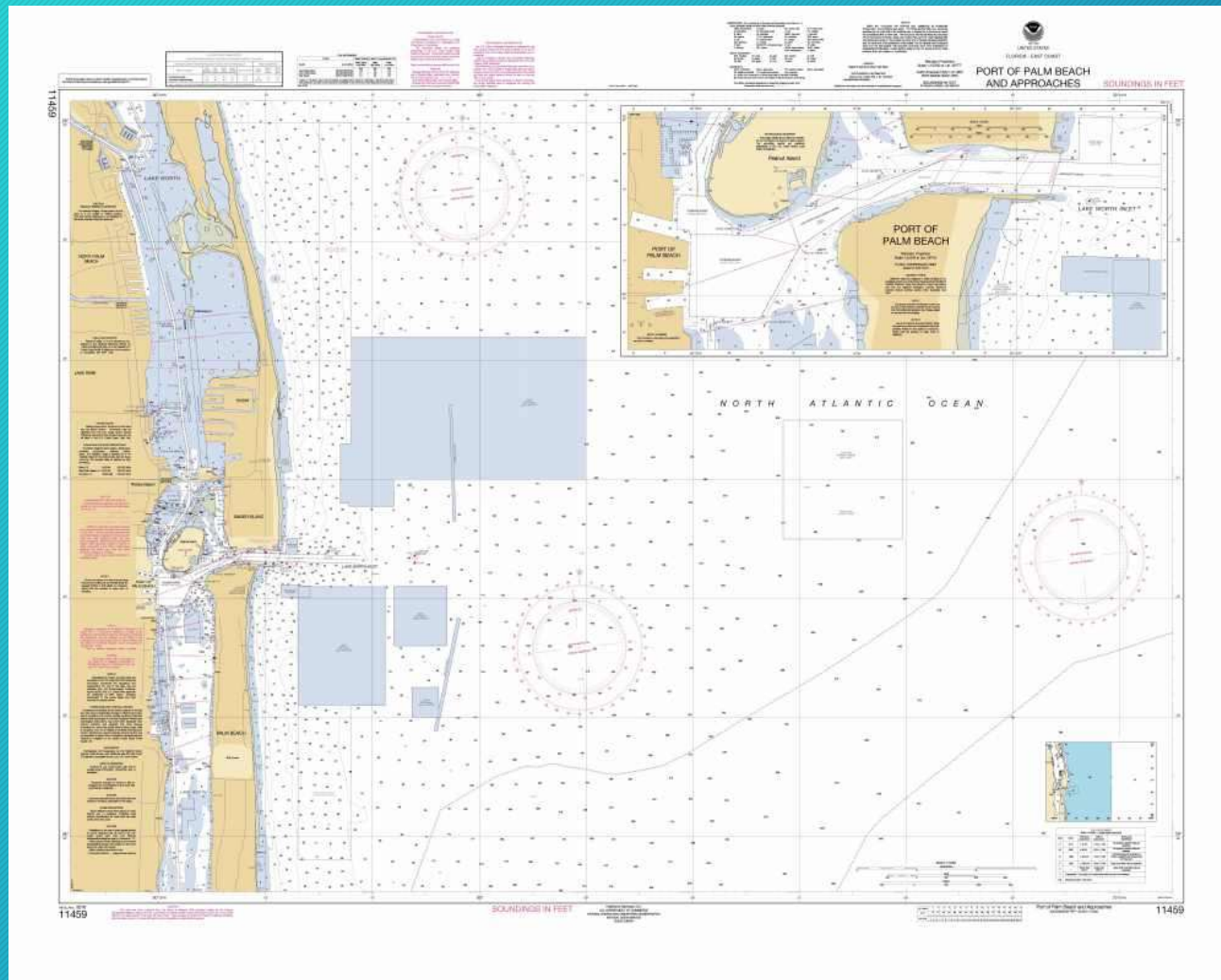
Kyle Ward
Navigation Manager, Office of Coast Survey

February, 2016

New Charts



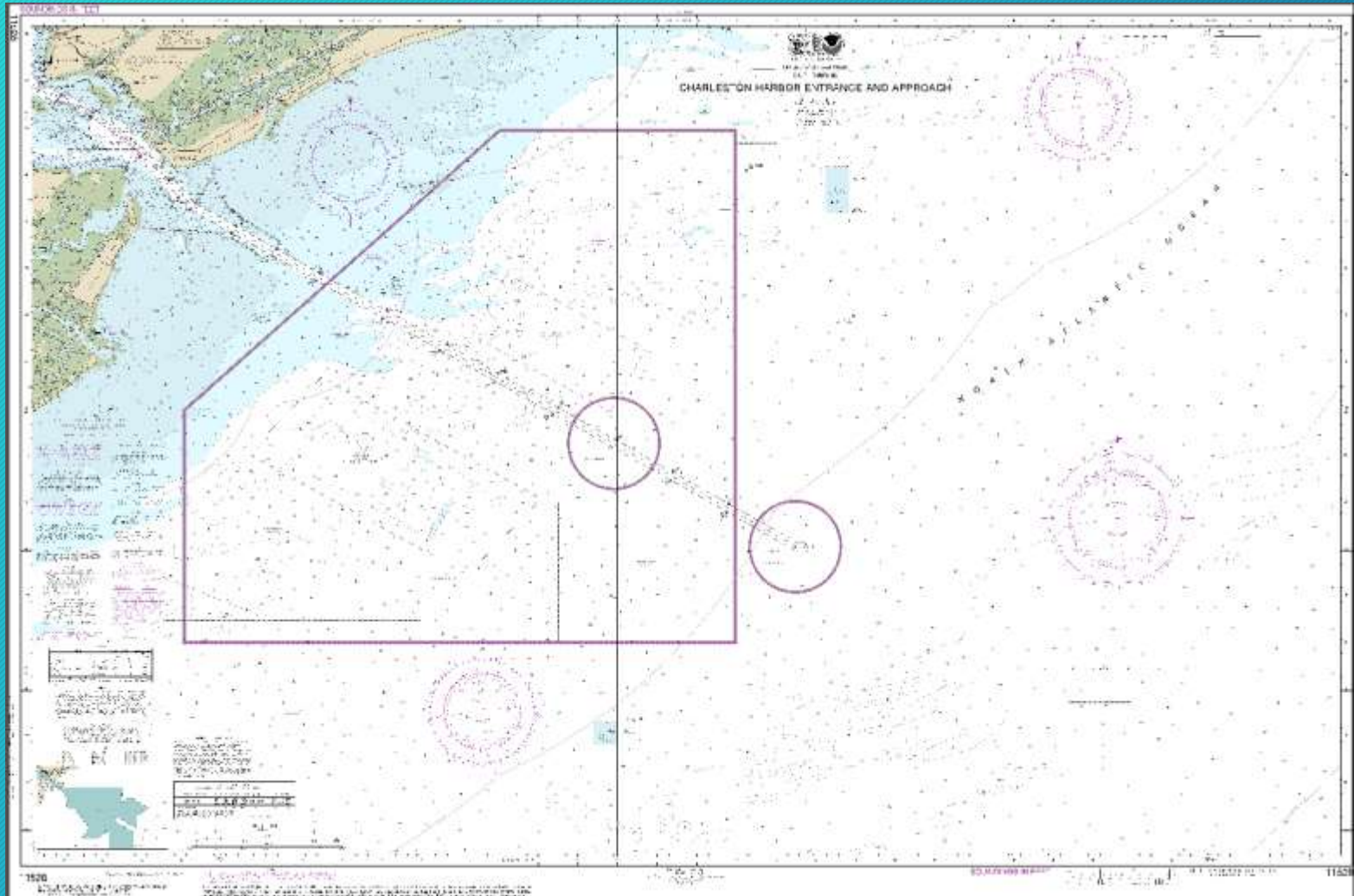
Palm Beach, FL 11459



New Charts



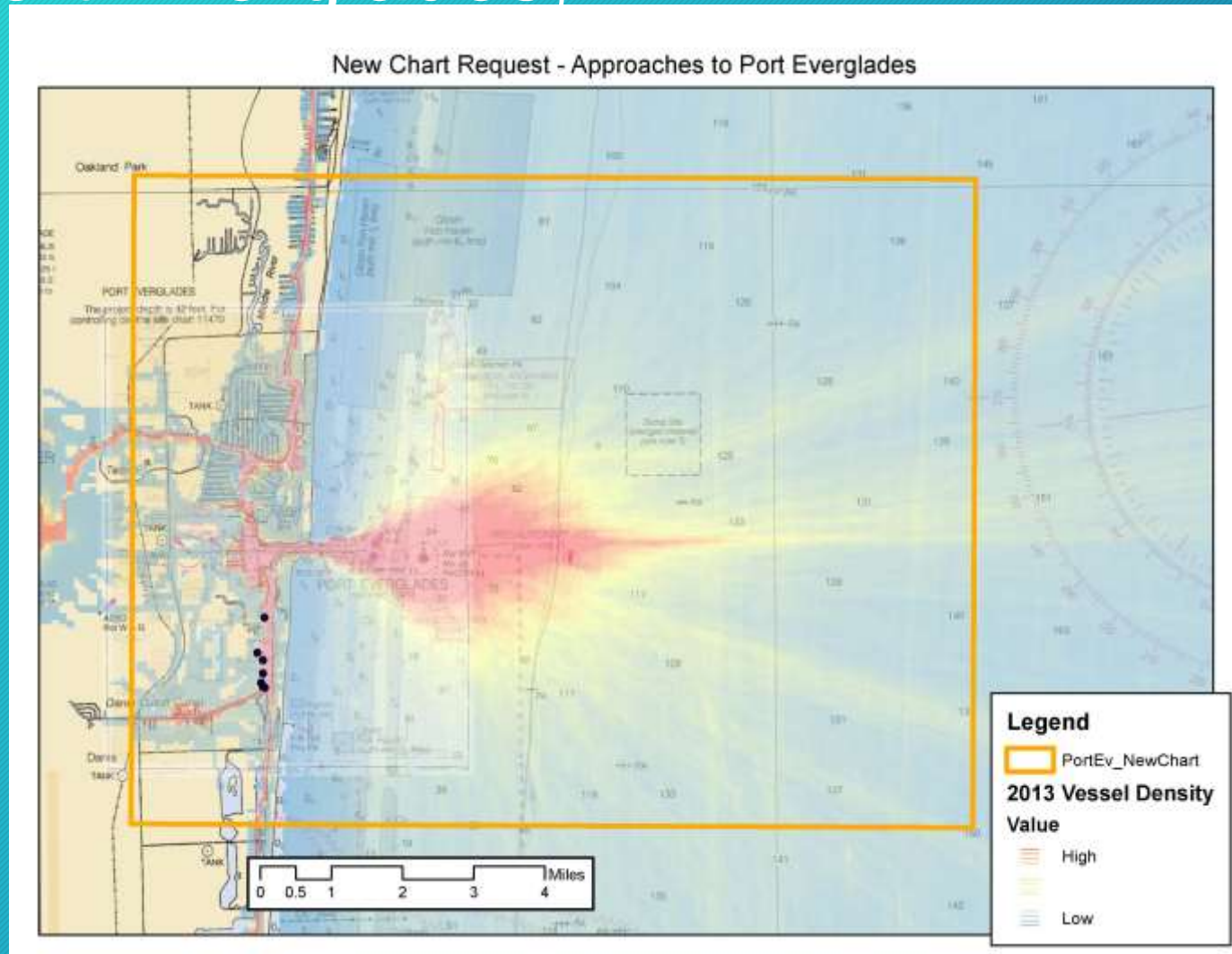
Charleston, SC



New Chart Requests



Port Everglades, FL



Surveying



**Data
Acquisition**

R/V *Bay Hydro II* surveying Norfolk after Hurricane Irene

Planned Surveys



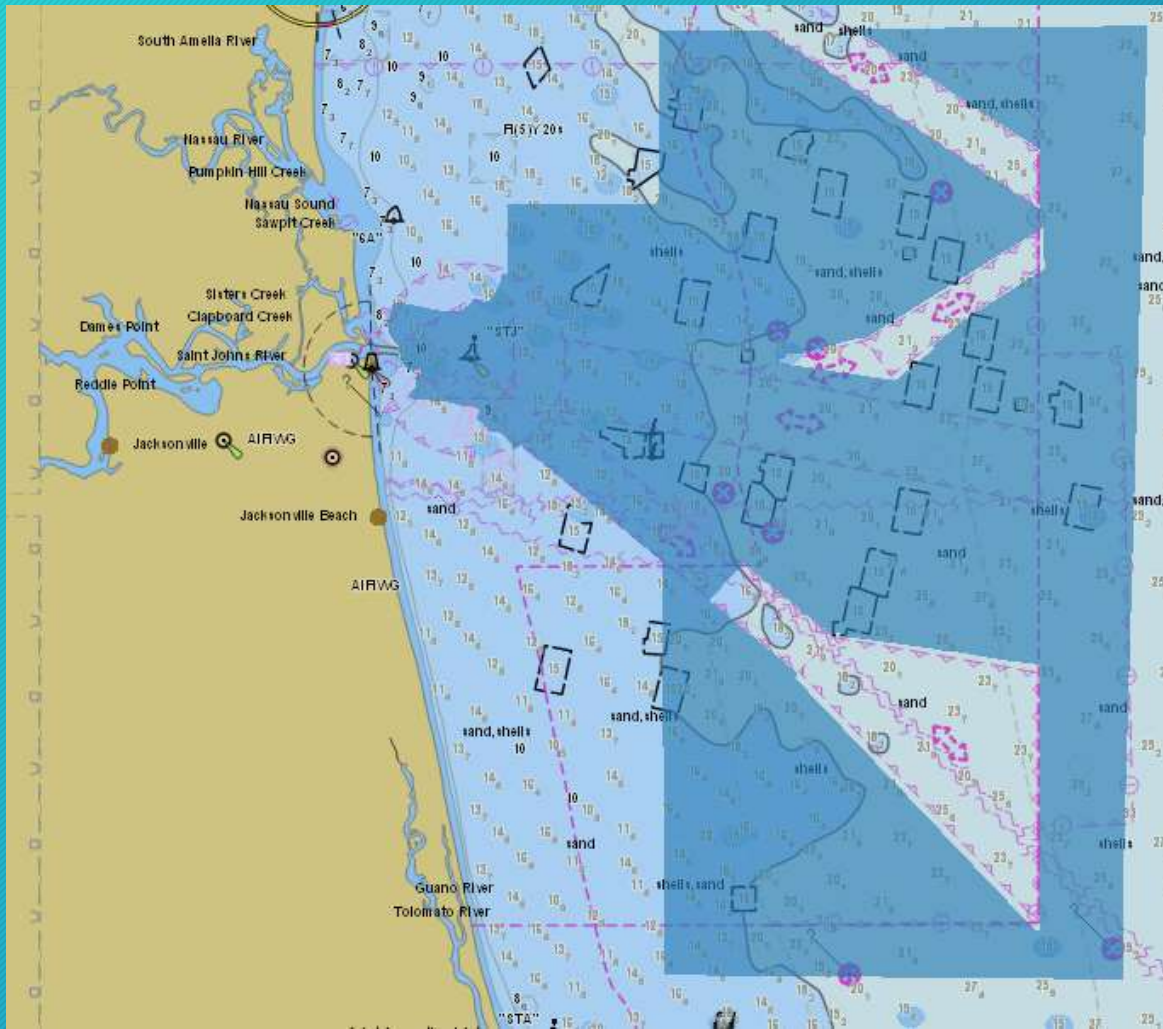
Savannah, GA



Planned Surveys



Jacksonville, FL



Hurricane Matthew Response

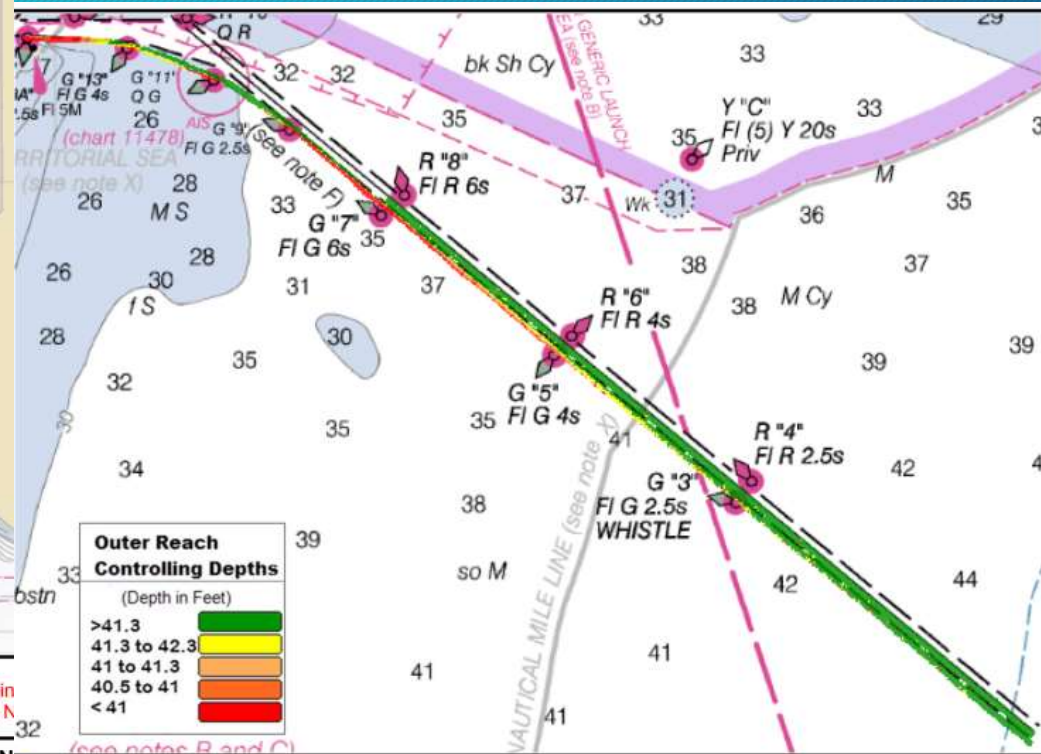


Port Canaveral, FL



Bathymetry acquired for Port Canaveral Trident Pier. Bathymetry and side scan were acquired. No obstructions were observed. This reflects state of seafloor on the date surveyed.

Preliminary
NOT FOR NAVIGATION



Outer Reach Controlling Depths	
(Depth in Feet)	
>41.3	Green
41.3 to 42.3	Yellow
41 to 41.3	Orange
40.5 to 41	Light Orange
< 41	Red

Bathymetry with concurrent side scan were acquired and inspected for Port Canaveral. No obstructions or

Hurricane Matthew Response



Survey Platforms



Ferdinand Hassler



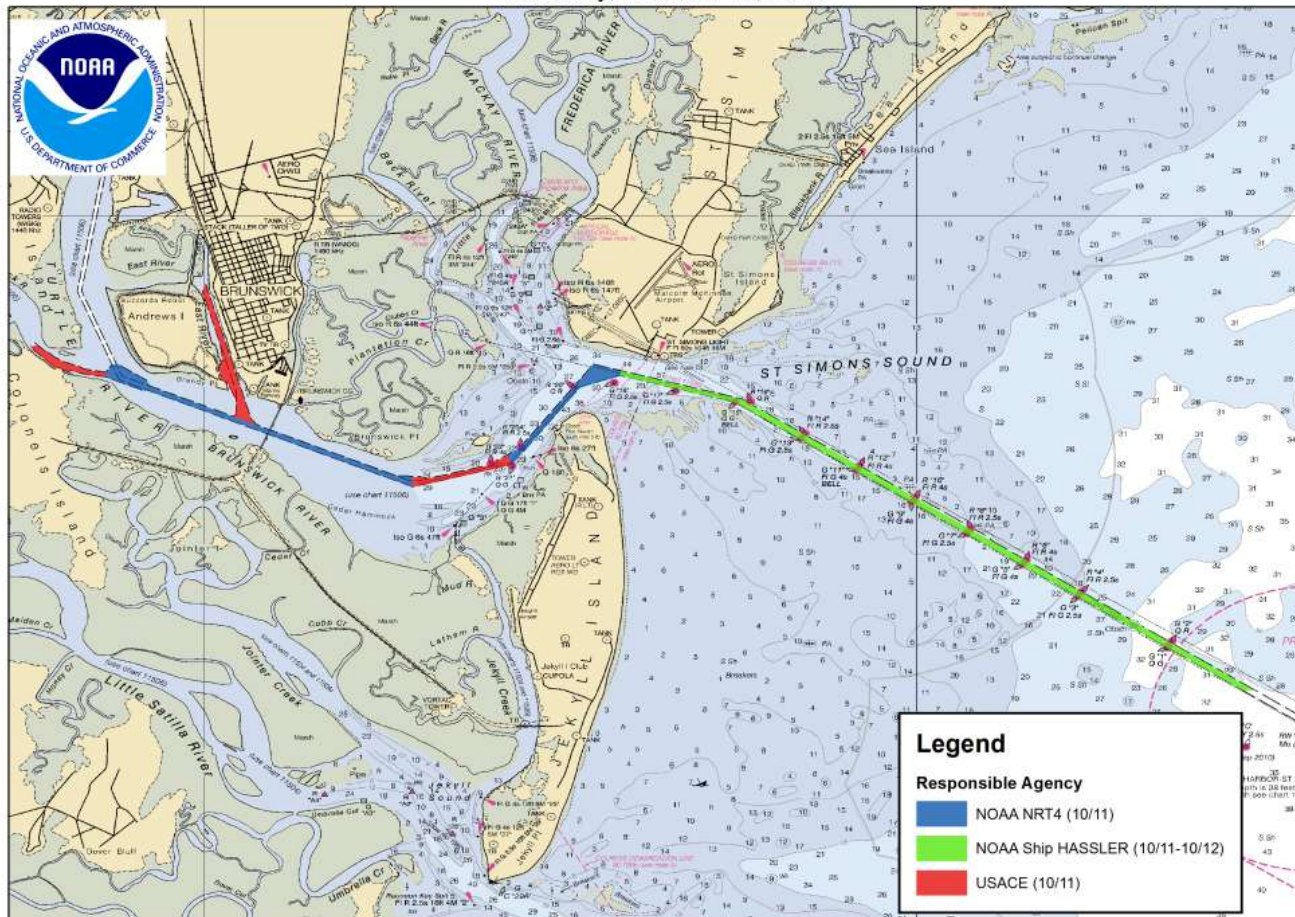
2 Navigation Response
Teams

Hurricane Matthew Response



Brunswick, GA

Hurricane Matthew - Brunswick, GA Survey Response Tuesday, October 11, 2016

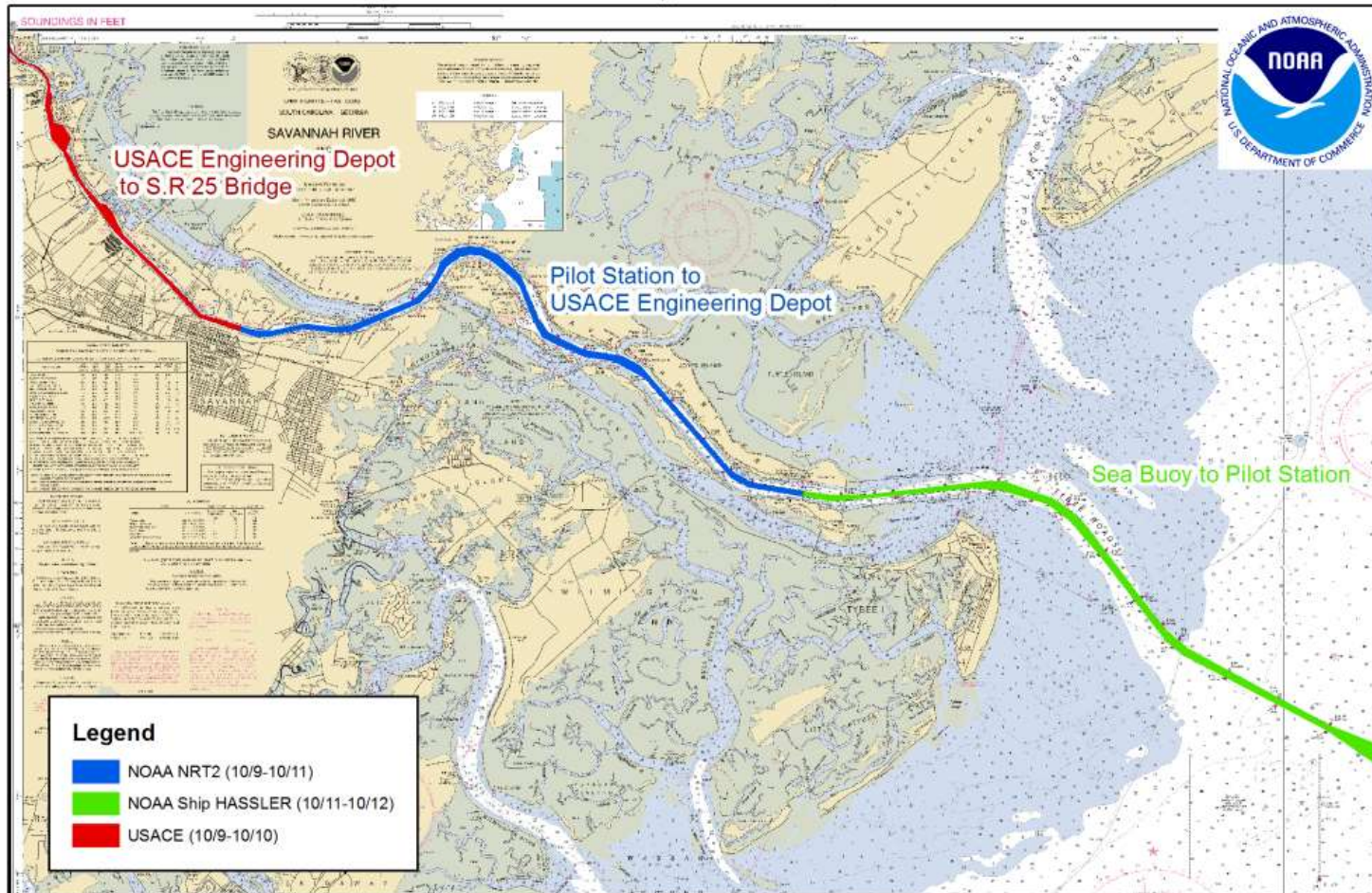


Hurricane Matthew Response



Savannah, GA

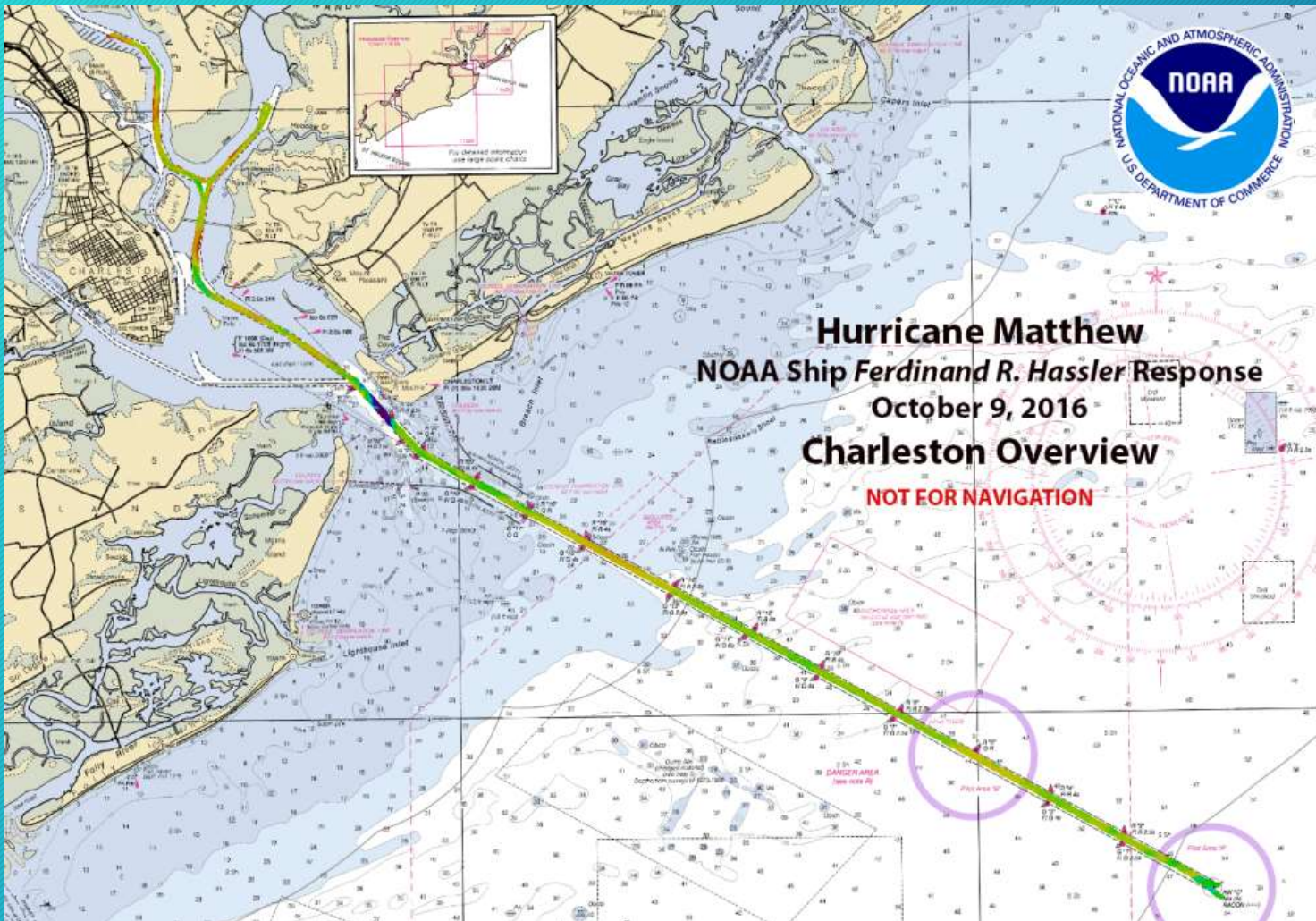
Hurricane Matthew - Savannah, GA Survey Response Tuesday, October 11, 2016



Hurricane Matthew Response



Charleston, SC





nauticalcharts.noaa.gov

Bloggging at noaanauticalcharts.wordpress.com

Twitter @NOAAcharts

Facebook at NOAA Charts

Kyle Ward
301-651-4852
Kyle.ward@noaa.gov

