

CONTAMINATED SEDIMENTS:

PLANNING AHEAD MEANS LESS

\$\$\$ and Time Out of Your Pocket

Contaminated Sediments Are \$\$\$ and Time Out of Your Pocket

Especially for remediation projects

(where the choice/control are no longer yours!)

But also for normal port operations (O&M or const)

Virtually all ports and harbors (& USACE!)* have
contaminated sediment to manage occasionally

Message: to reduce delays and costs,

HAVE OPTIONS READY IN ADVANCE!

Important Questions to Ask

First: Is it really “Contaminated”?

Evaluate initial test results carefully:
What “failed” and why?*

Next: Have you ID’d the minimum volume?

It’s usually worth more characterization cost to
find least volume needing special management

Then: “Contaminated” for What?

Unsuitable for one kind of disposal or use is
often still suitable for other uses

Typical Management Options

?? **Forego project** entirely or in part, or...

DISPOSAL OPTIONS

\$ **Dredge and Dispose Nearby:**
Confined Aquatic Disposal (Boston, PH*)

\$\$ **Dredge and Dispose Nearby:**
Upland/Nearshore CDF (Noyo, Guam DMP*)

\$\$\$ **Dredge and Dispose Off Site:**
Landfill Disposal (with rehandling) (POO, ECDC)

Typical Management Options

REUSE OPTIONS

- \$ **Dredge and Reuse On Site:**
Construction Fill/Stockpile (POO, POLA/LB, SacSC)
- \$\$ **Dredge and Reuse Off Site:**
Habitat Development (POO, Baltimore)

PROCESSING/TREATMENT OPTIONS

- \$\$\$ **Aim: Reduce Volume/Increase Disposal Options**
(MdR, SC)*

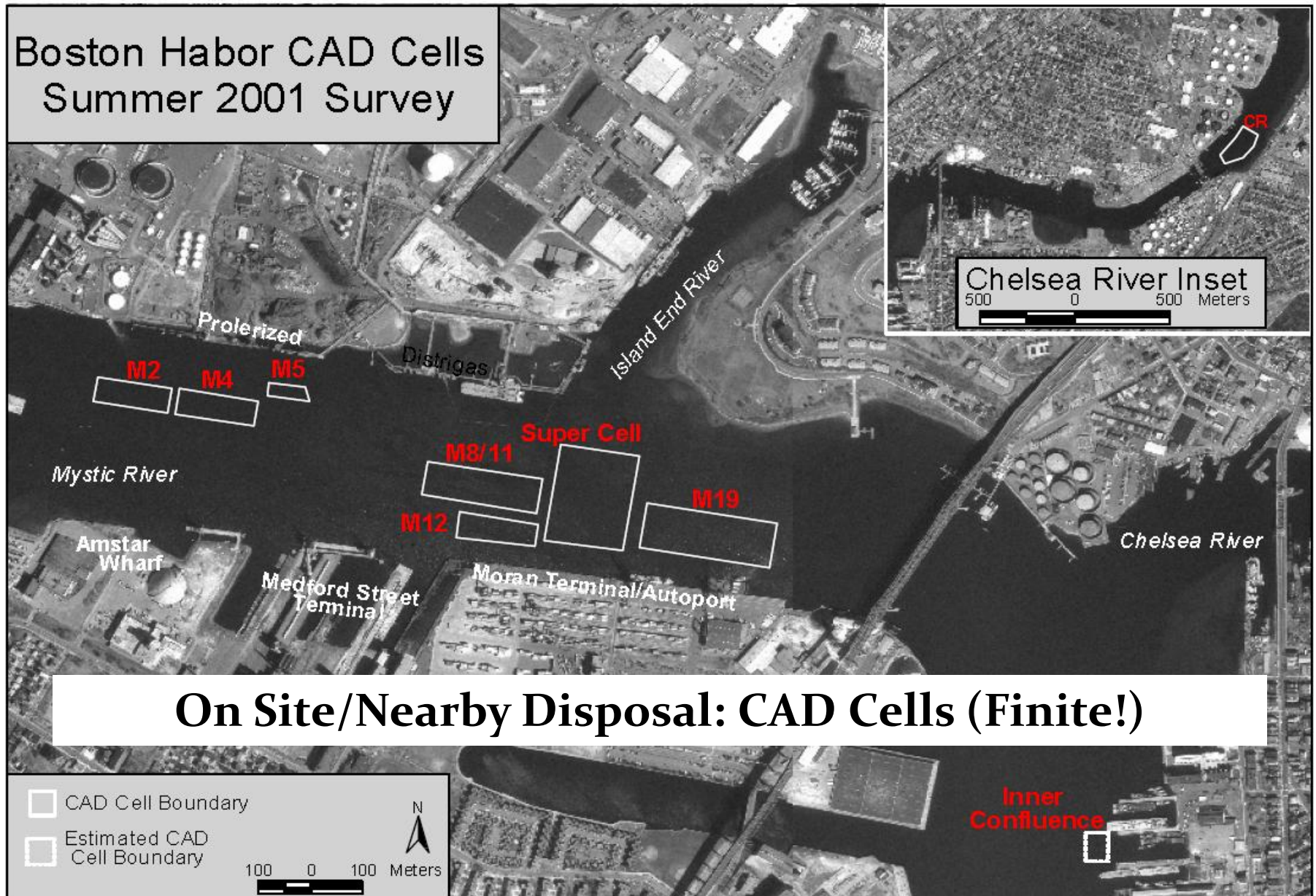


On Site/Nearby Disposal: CDF (Manage!)



Off Site Disposal: EDCD Landfill

Boston Harbor CAD Cells Summer 2001 Survey





POLA/POLB

On Site Use: Construction Fill



On Site Use: Construction & Fill Habitat Restoration



On Site Use: Habitat Restoration (Rehandling!)



Off Site Use: Habitat Restoration



Moss Landing HBR

Example of a harbor without a plan...

Thank You!

Questions?

*Brian Ross, EPA Region 9
Dredging & Sediment Management Team
ross.brian@epa.gov
415-972-3475*