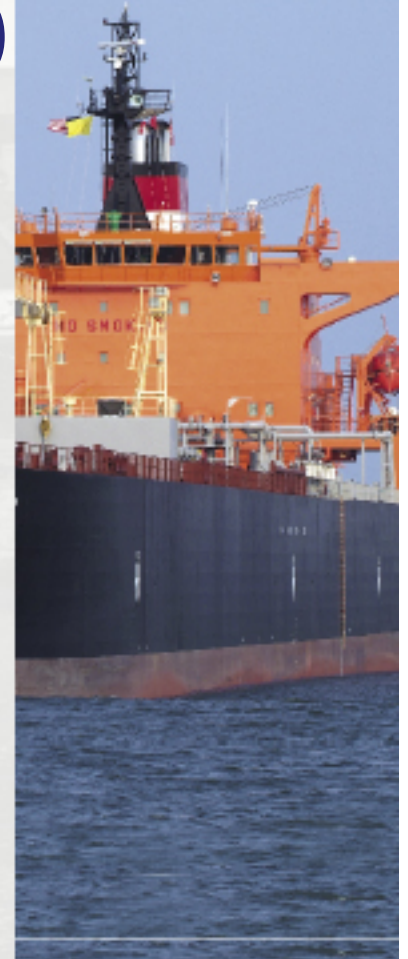




Port of Houston (Public and Private facilities)

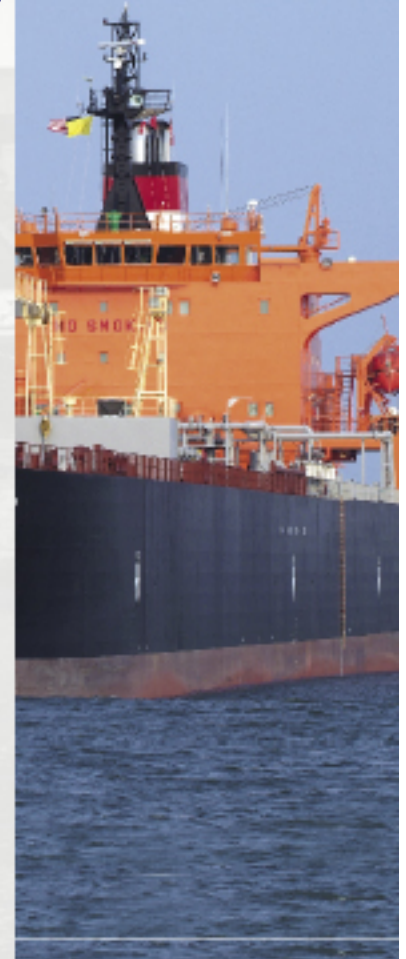
- **1st in US in Foreign Tonnage**
- **2nd in Total Tonnage**
- **6th Largest Port in the World**
- **6,539 Vessel Calls in 2004**
- **Service to 1051 Ports Worldwide**
- **Over 200 million tons of cargo**
- **\$65,899,054,275 in Foreign Trade**

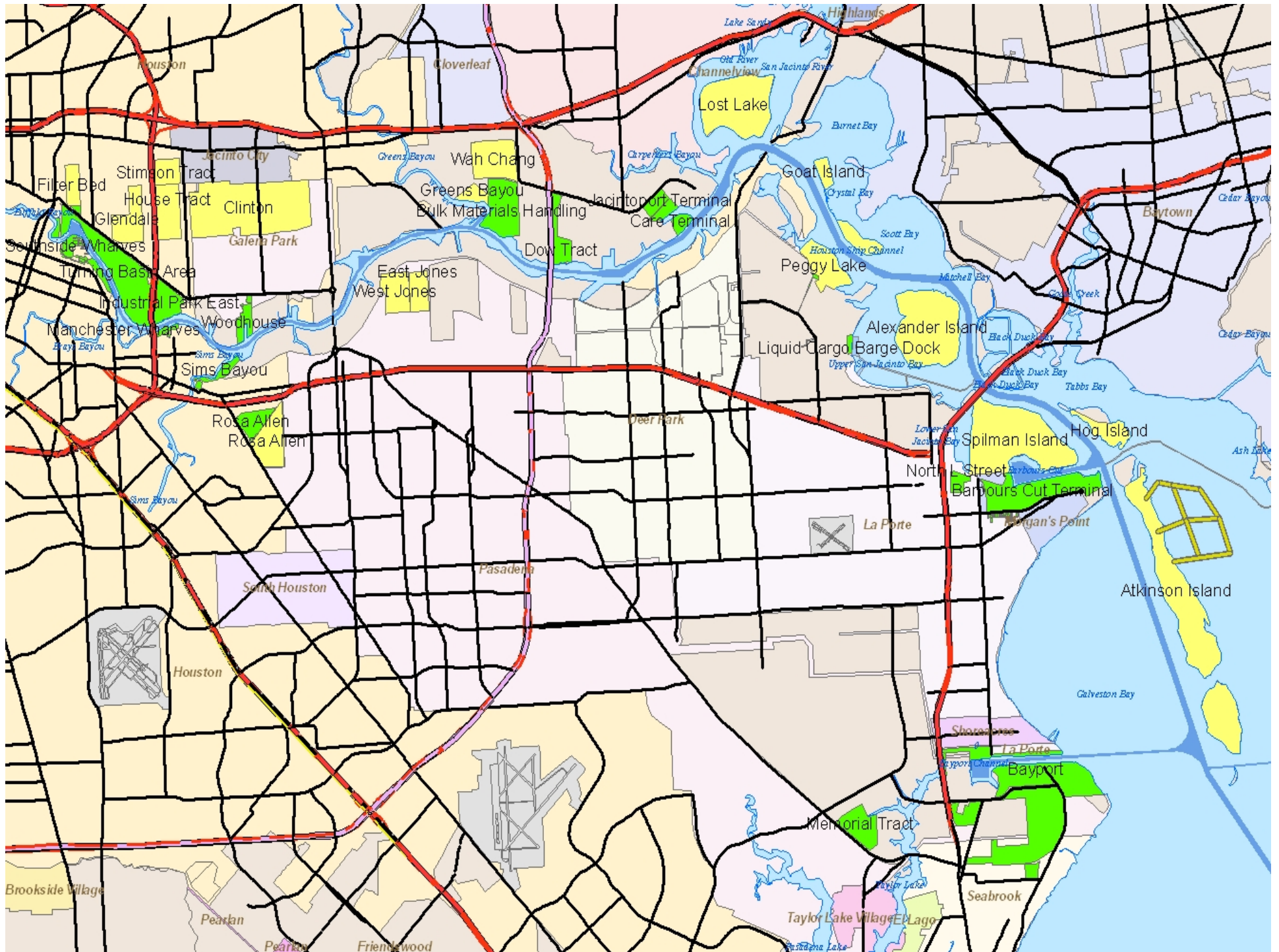




Port of Houston Authority

- **11 Public Terminals**
- **>9,000 acres**
- **150 Tenant Properties**
- **Owns the 53-mile ship channel**
- **34.6 million tons for PHA (~15%)**
- **1.58 million Containers (TEUs)**
- **\$155 million in PHA Operating Revenue**

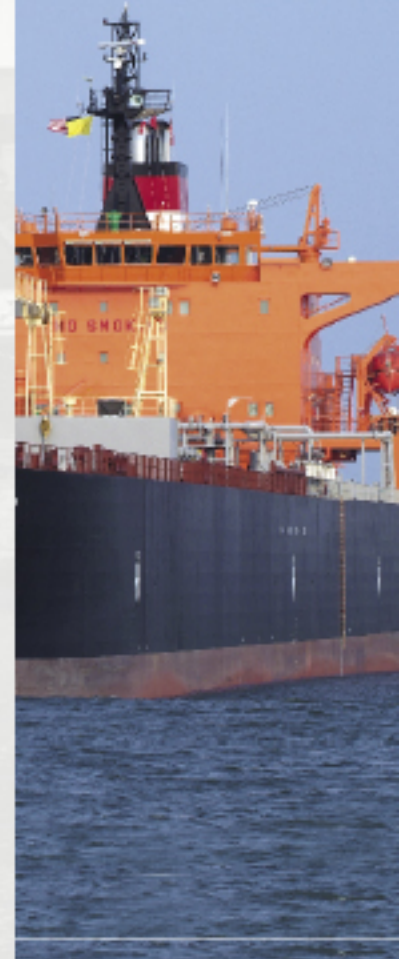






Creation of the PSSC

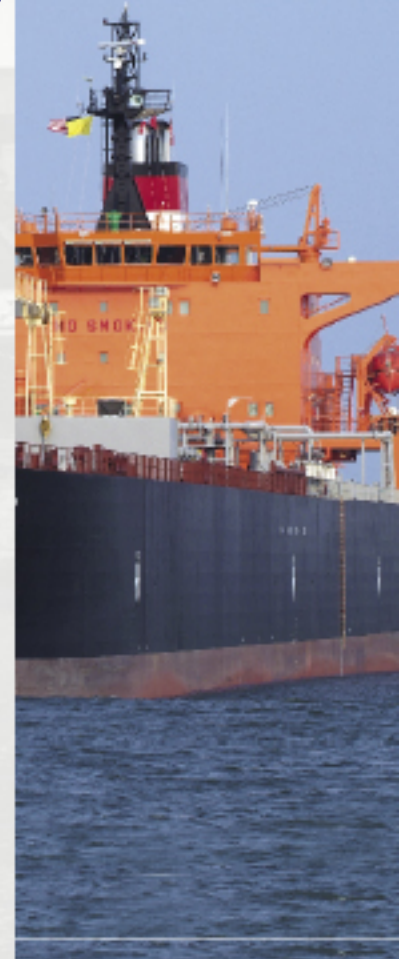
- **Identify Sponsor**
- **Write the Plan**
- **Who Should be Members**
- **How to Fund**





Port of Houston Authority

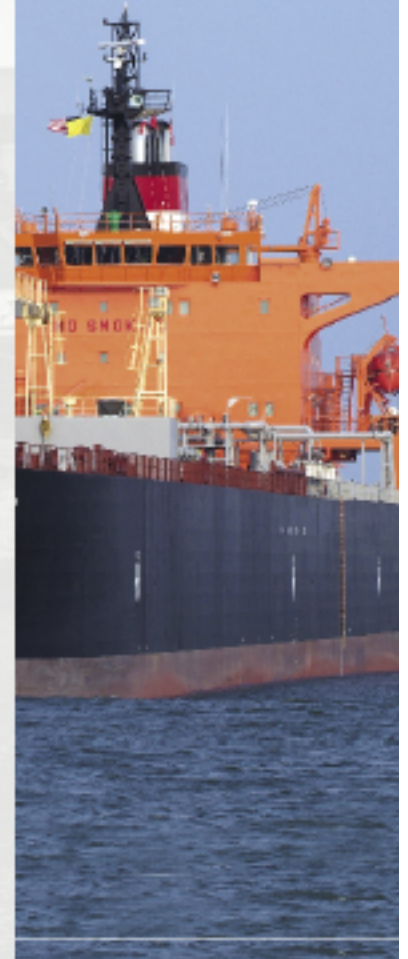
- **11 Public Terminals**
- **>9,000 acres**
- **150 Tenant Properties**
- **Owens the 53-mile ship channel**
- **34.6 million tons for PHA (~15%)**
- **1.58 million Containers (TEUs)**
- **\$155 million in PHA Operating Revenue**





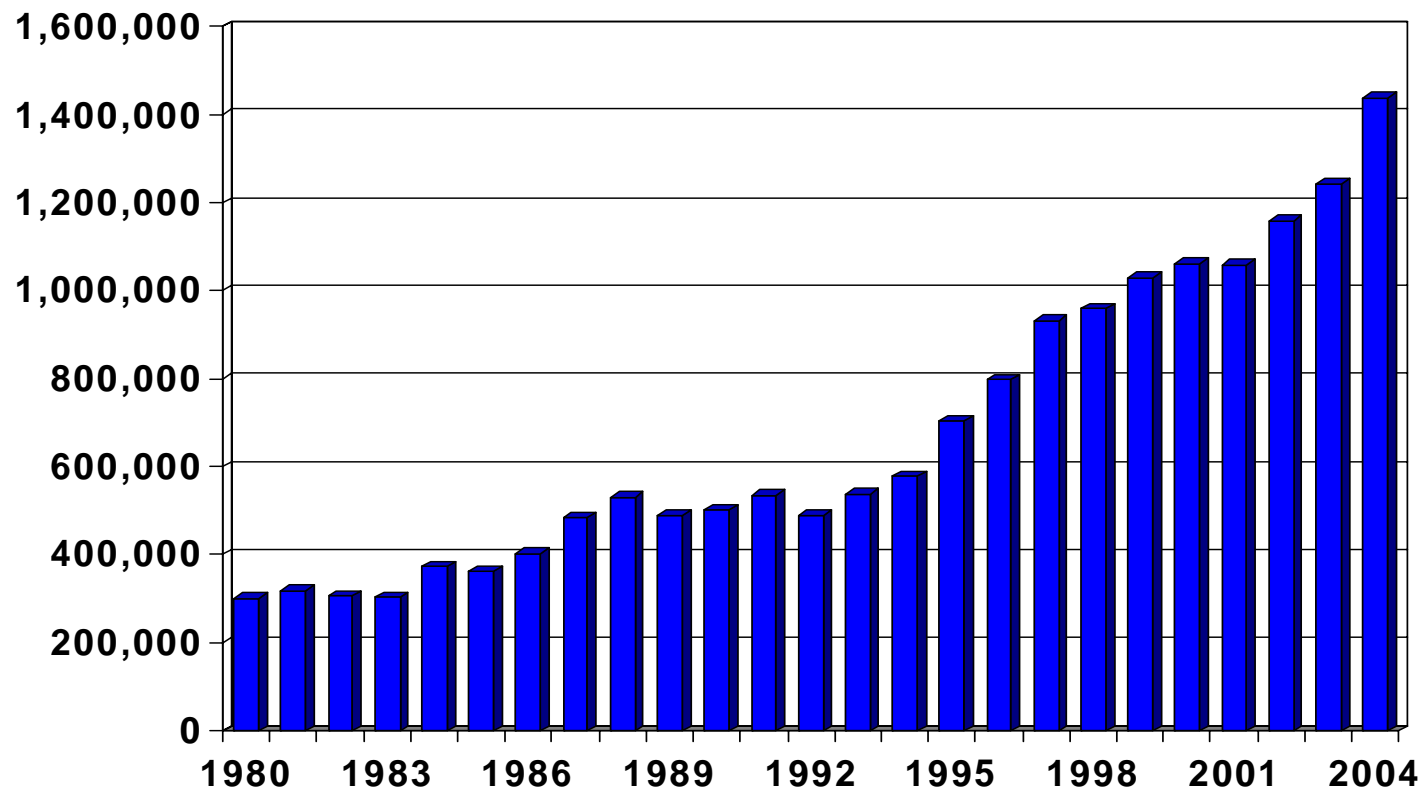
Market Growth

- **Explosive growth in container traffic**
- **New distribution supply chains**
- **New mega distribution centers**
- **New direct all water services from East Asia**
- **All due to the strike on the West Coast two years ago**
- **Planned expansion of Panama Canal**



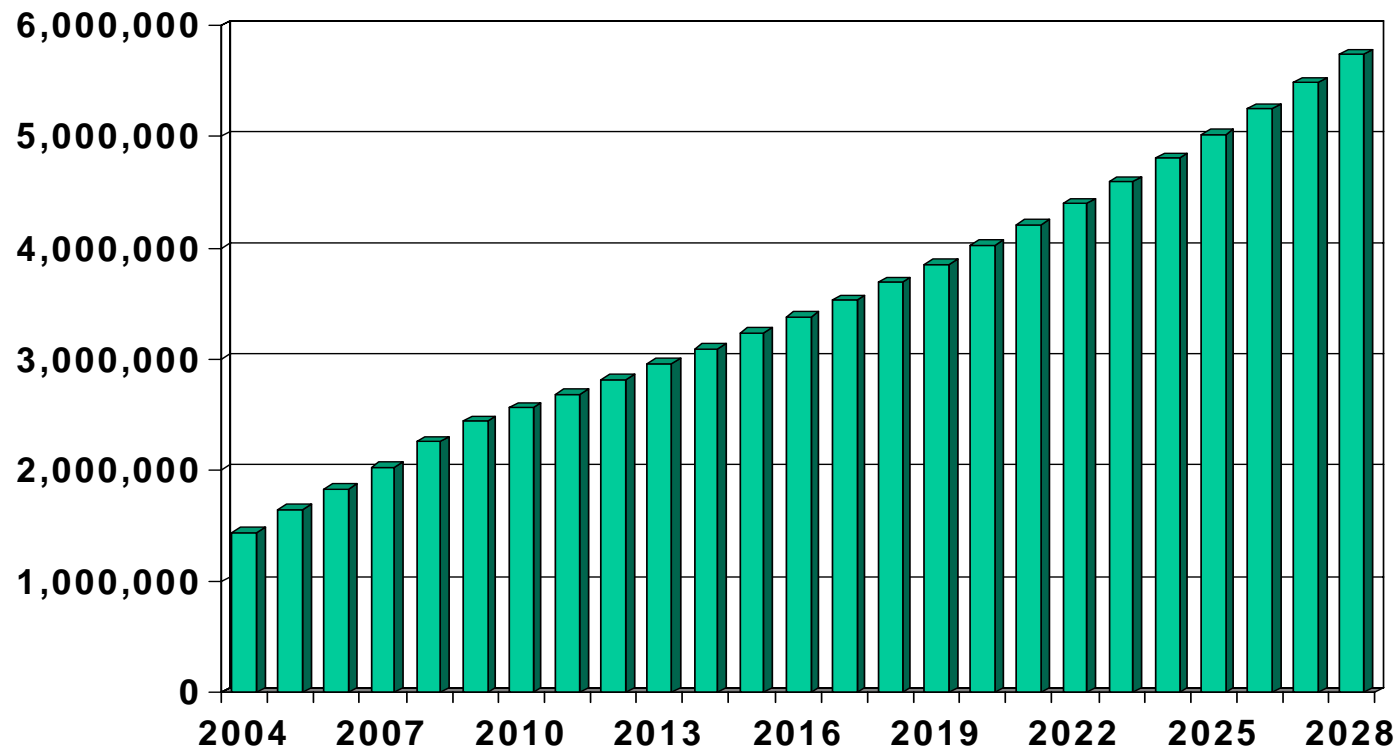
Market - Historical

Port of Houston TEU Container Volume: History
1980 - 2004



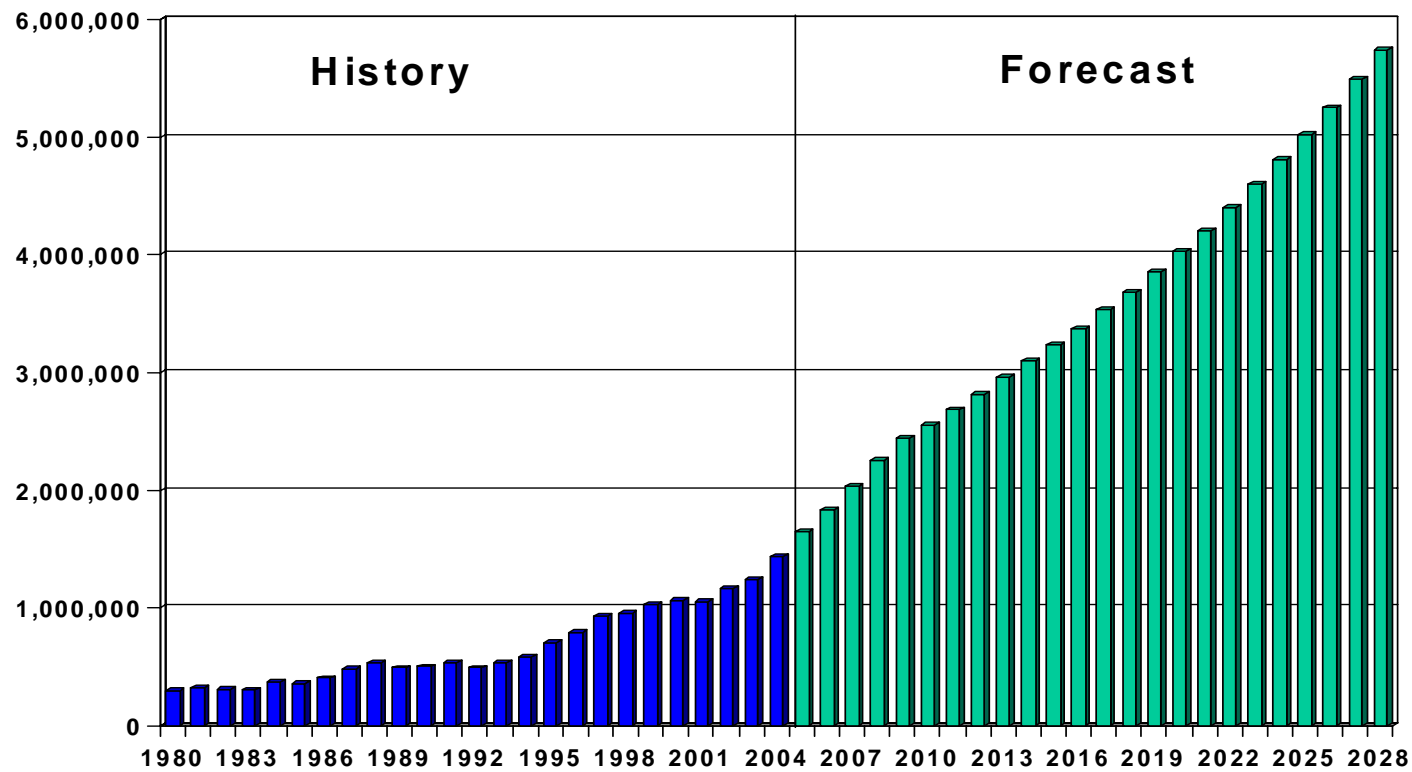
Market - Projected

Port of Houston TEU Container Volume: Forecast
2004 - 2028



Container Volume

Port of Houston TEU Container Volume
1980 - 2028





New Distribution Trade Lanes

- The large retailers are re-examining their supply chains, seeking diversity and flexibility



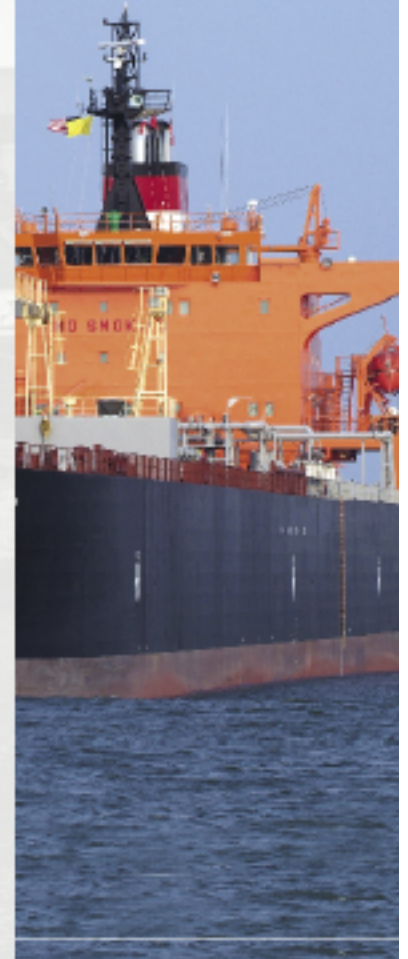
- We must be ready for Wal-Mart, Home Depot, other large, future distribution centers





Market Growth

- **General cargo and other cargos also continue to grow**
- **Steel is recovering**
- **Project cargoes are strong**
- **USAID bagged products continue to feed the world**
- **But containers lead the growth**
- **How to accommodate this demand**



Bayport



- Under construction!



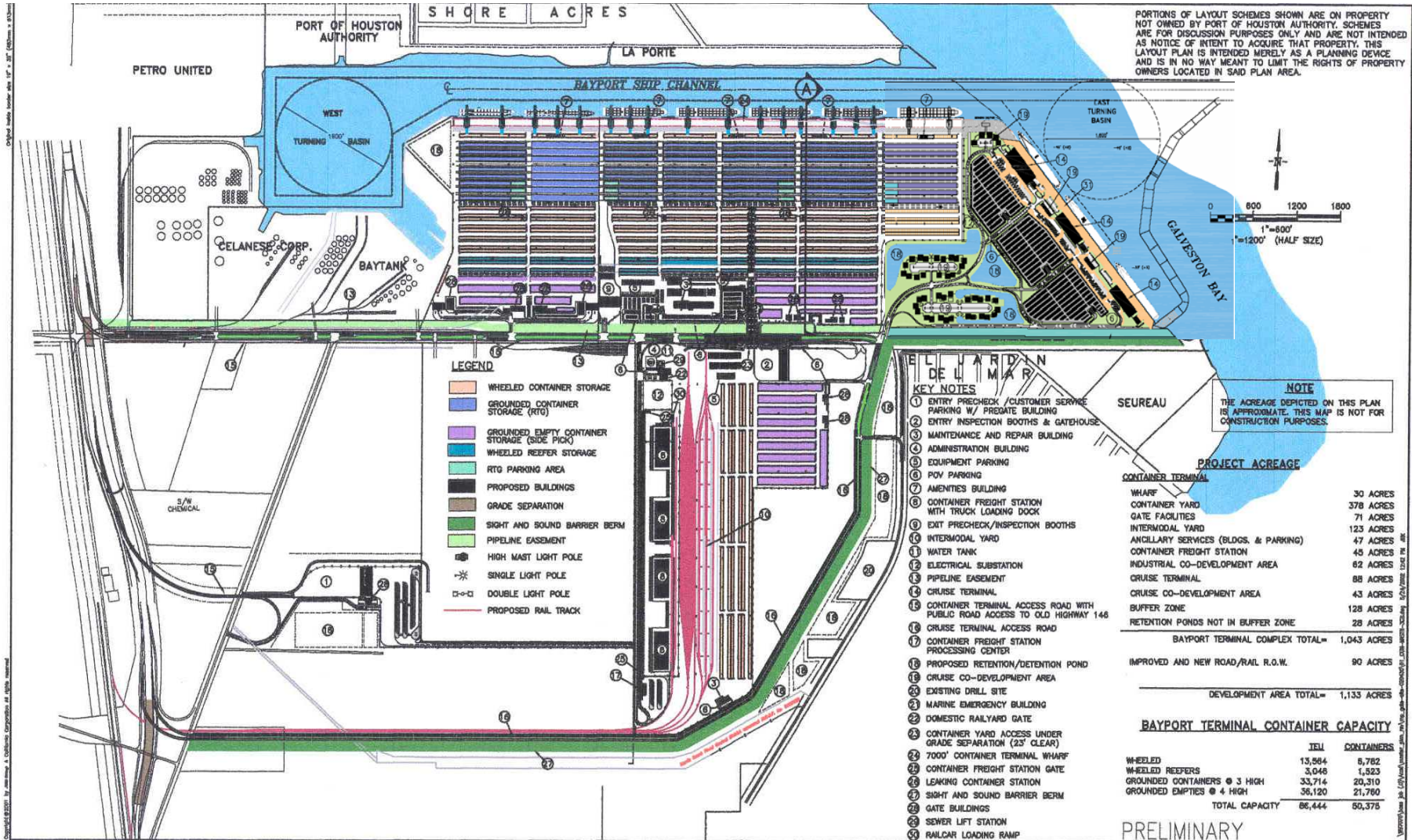
Proposed Bayport Project

- 7 container ship berths
 - 3 cruise ship berths
 - Intermodal facility
 - Warehousing
 - Supporting road infrastructure
- TXDOT, HC



- Container/Cruise co-development within fence line
- Constructed as needed over the next 10-20 years

Bayport Master Plan



Revision	By	Approved	Date
1	AS	PRV	05-25-02
2	SJD	PRV	05-25-02

ENVIRONMENTAL
Lookwood, Andrews & Newnam, Inc.
ACROSS
Nothelene A. Kennedy & Associates
AVILES Engineering Corp.
CROSS ENVIRONMENTAL
Geo & Jenson, Prime Interests
AVILES CONSULTANTS
Liftech Consultants Inc.

JWD Group
A California Corporation
300 Lakeside Dr, 14th Floor
Oakland, CA 94612
510-835-5491
510-835-3494 fax
www.jwdgroup.com



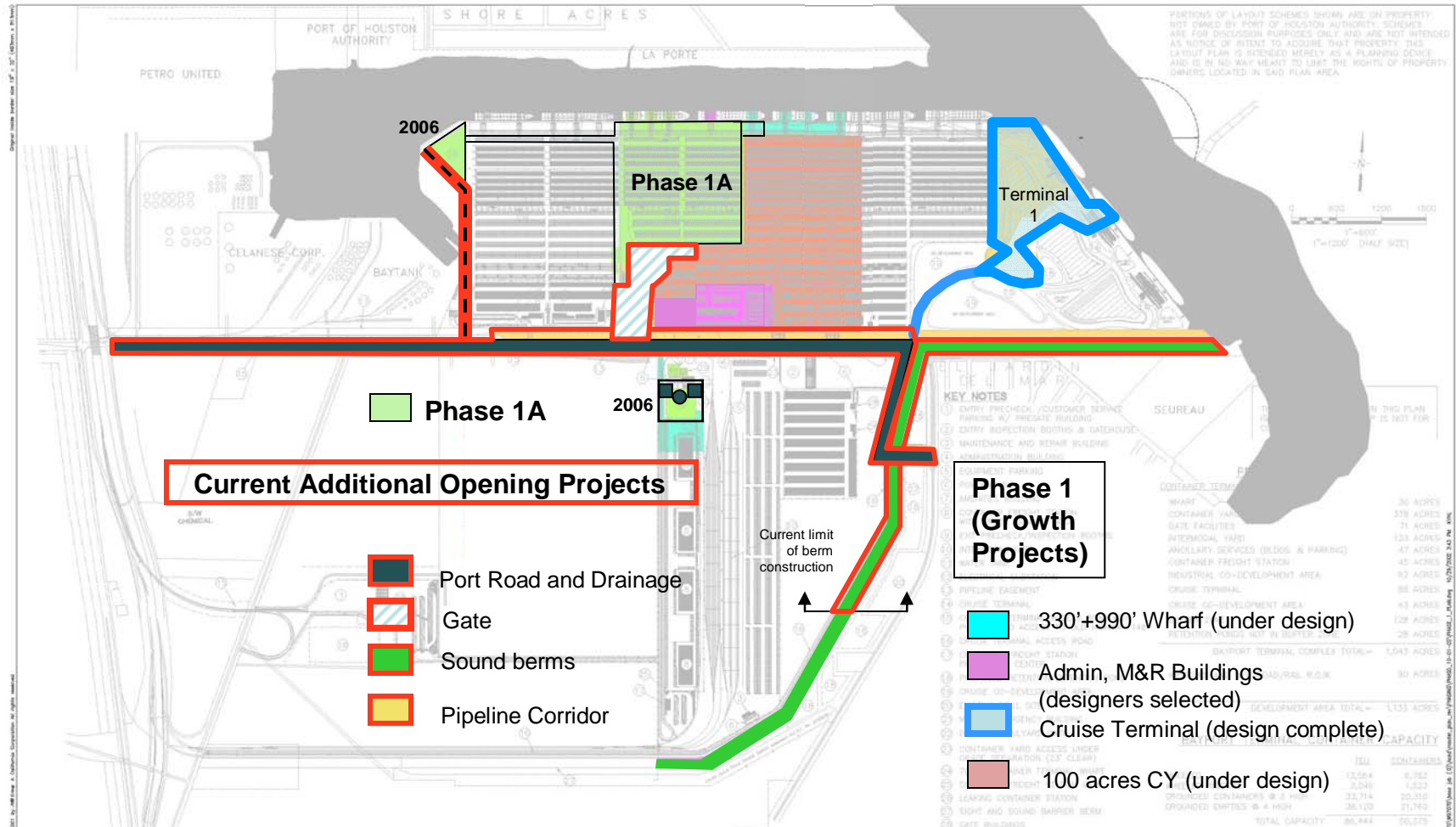
Drawn By
PADI
Approved By
Issue Date
Date 11/02/01



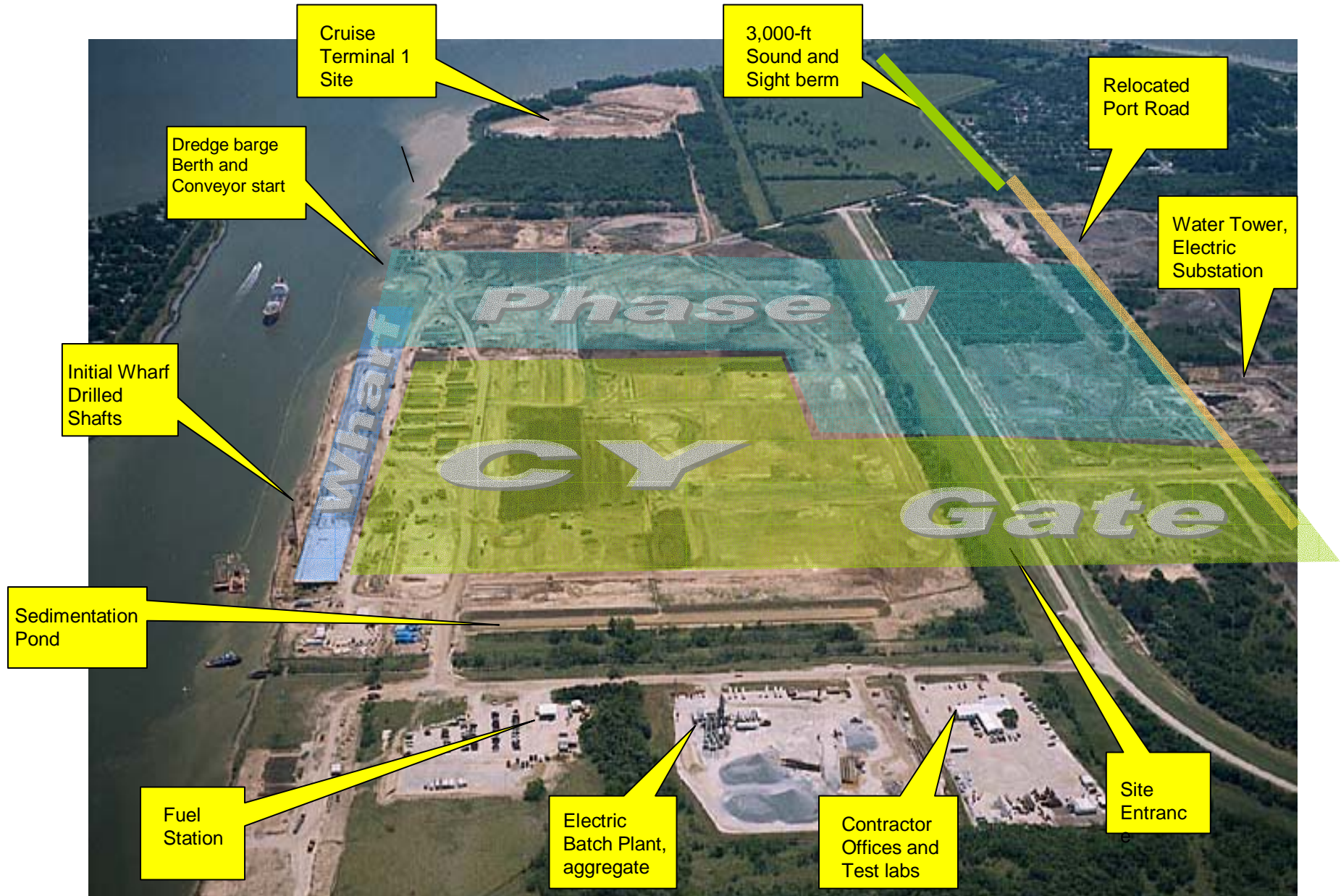
BAYPORT TERMINAL COMPLEX
PLANNING AND ANALYSIS
PORT OF HOUSTON AUTHORITY
HOUSTON, TEXAS

Sheet Title
CONCEPTUAL MASTER PLAN WITH 3 CRUISE BERTHS
Project Number
W07070
Sheet Number
1 of

Bayport Essential Opening Plan



Bayport Construction Orientation





BAYPORT CONSTRUCTION

- Contracts/POs in 2005: \$162.5 million, including:
 - RTG cranes
 - Port Road
 - Cruise terminal
 - Marine terminal gate
 - Amenities building
 - Elevated water tank
 - Lift station/force main
- Contracts/POs since inception: \$390.1 million
- U.S. Fifth Circuit upheld District Court's favorable 2004 ruling
- Related state case also favorably resolved
- Grand opening in Container Terminal 2006
- Grand opening Cruise Terminal April 2007

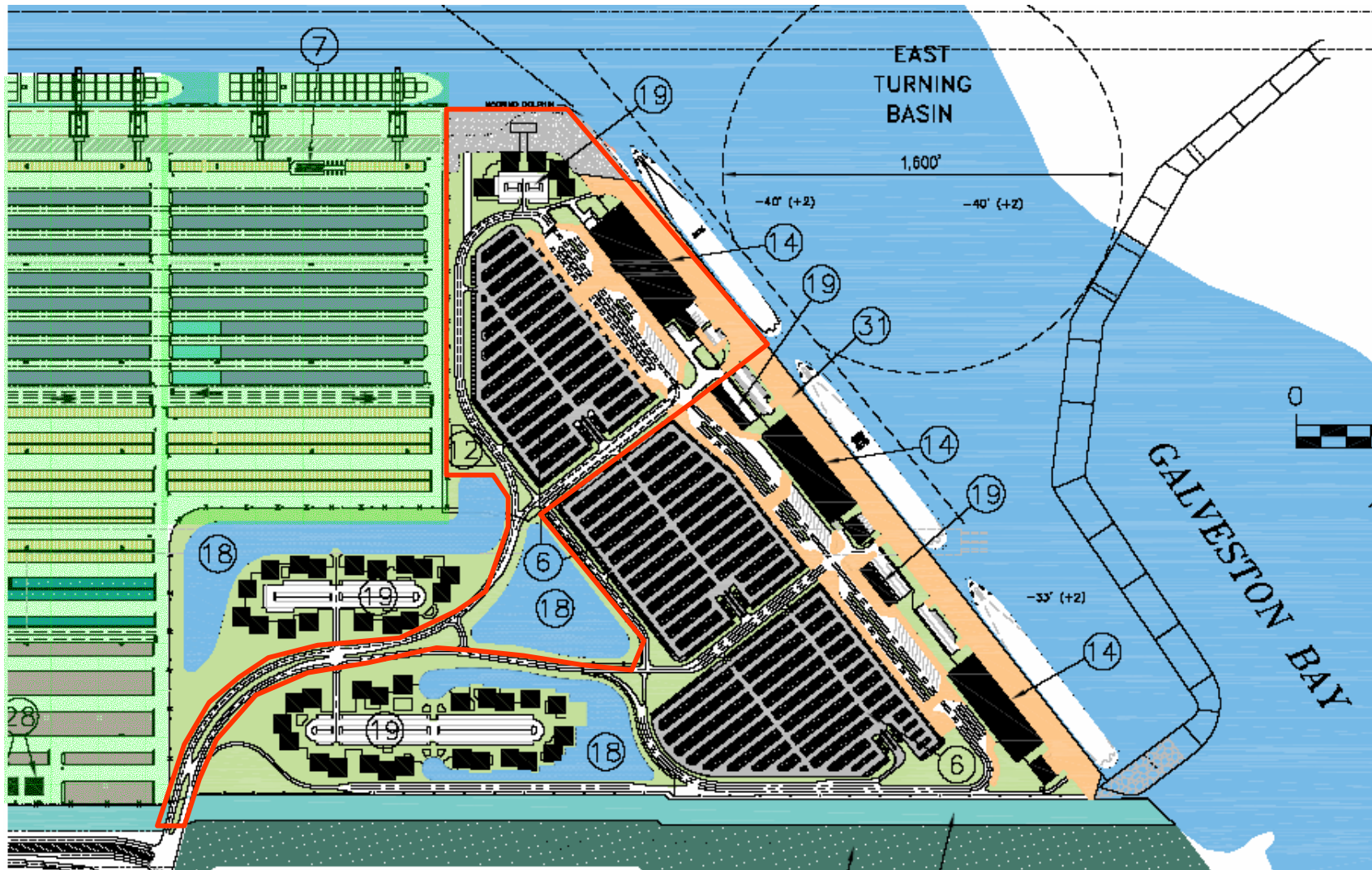




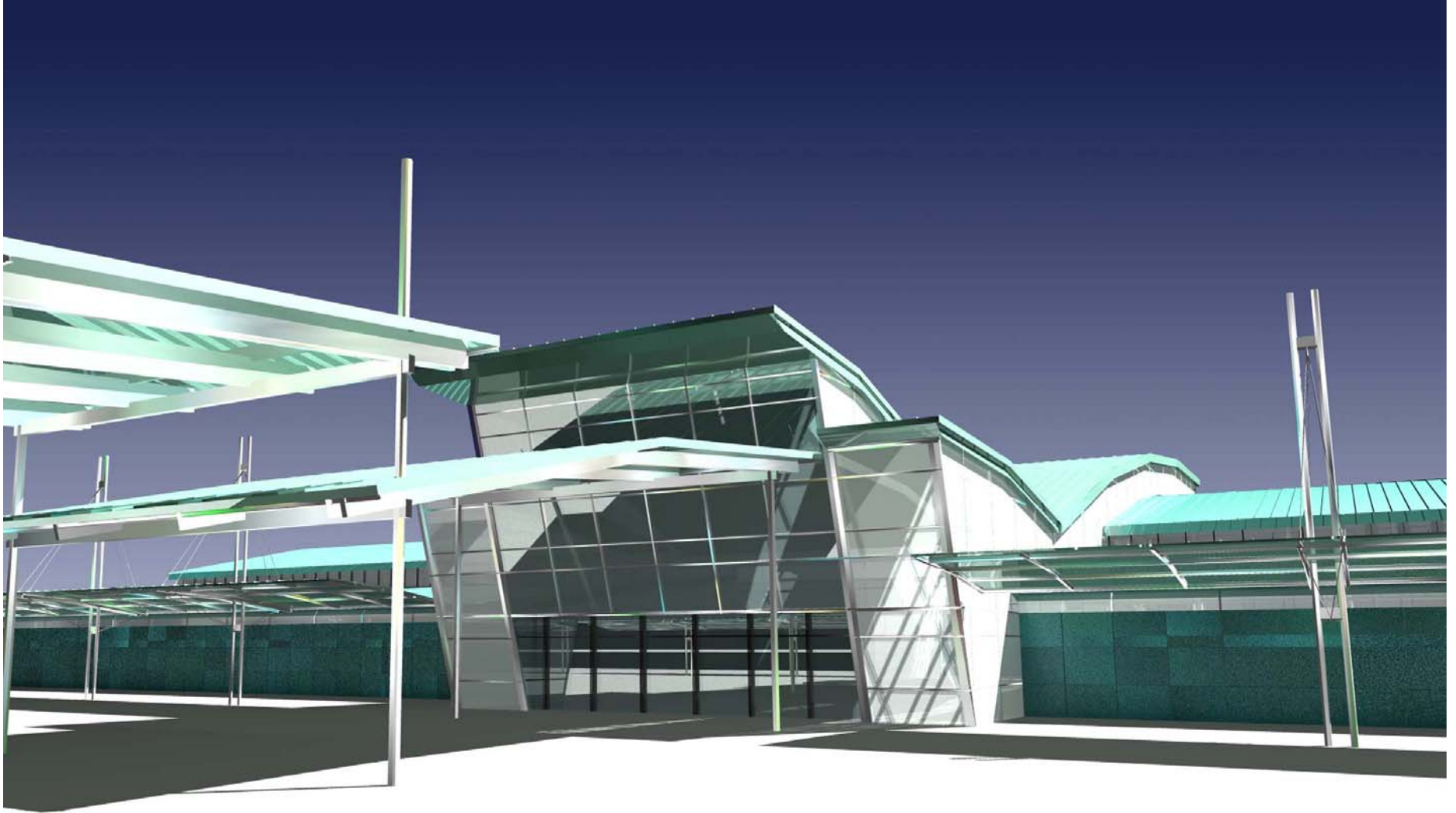
Bayport Cranes



Cruise Master Plan



Cruise Terminal Building



Bayport Cruise Terminal





THE PORT
DELIVERS
the goods

From *Bayport*, soon....