

# USCG/CBP NATIONAL PROTOCOLS FOR MTS RECOVERY



**Homeland  
Security**



U. S. Customs and  
Border Protection



**U.S.  
Coast Guard**

# Overview

- **Purpose**
- **Goals**
- **Stakeholders Engaged**
- **Description of MTS Recovery Protocol**
- **Results**



**Homeland  
Security**



U. S. Customs and  
Border Protection



**U.S.  
Coast Guard**

# Purpose of MTS Recovery Protocol

- Provide a forum for joint intergovernmental dialogues and joint government/private sector dialogues to identify and act on important issues to facilitate rapid MTS recovery and resumption of commerce.
- Assist senior-level decision makers by providing a process to collect and disseminate information to understand the status of the national MTS and to facilitate joint decision-making.
- Assist senior-level decision makers by providing recommendations for national-level priorities for recovery of the MTS and resumption of trade. The priorities may include cargo or vessel priorities, or strategic actions necessary to facilitate rapid recovery of the MTS and resumption of trade.



**Homeland  
Security**



U. S. Customs and  
Border Protection



**U.S.  
Coast Guard**

Purpose

Goals

Stakeholders

Description

Results

# Goals of MTS Recovery Protocol

- Support NSPD-41/HSPD-13 initiatives
- Support MTSA requirement for a plan to ensure cargo flow is efficiently and quickly reestablished through U.S. ports after a Transportation Security Incident (TSI)
- Fulfill SAFE Port Act requirement to provide protocol for expeditious resumption of trade in a post TSI environment
- Consider collateral impacts of MTS incident on international commerce
- Facilitate federal decision-making actions
- Help to implement the MIRP requirements
- Define Coast Guard and CBP interactions with other government agencies in recovery effort

**Accomplish goals by establishing a communications process at national level**



**Homeland  
Security**



U. S. Customs and  
Border Protection



**U.S.  
Coast Guard**

Purpose

Goals

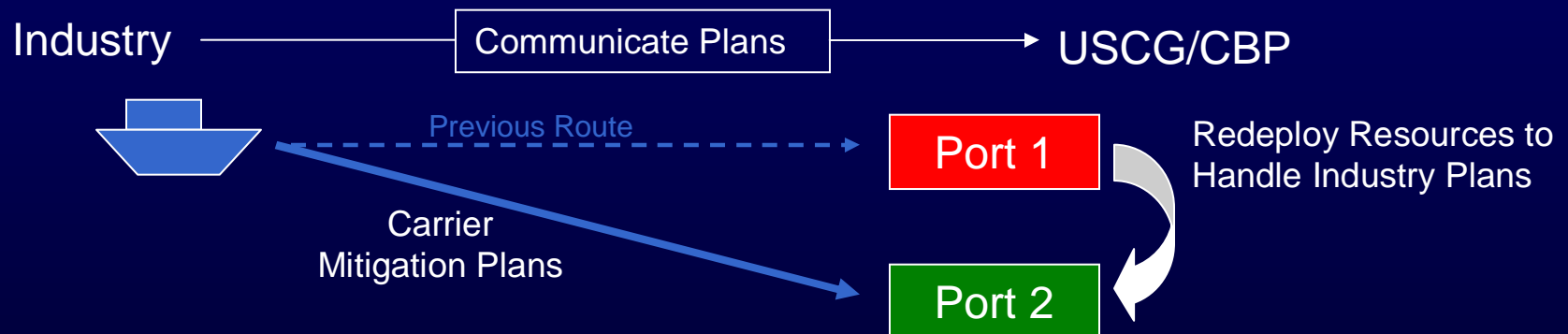
Stakeholders

Description

Results

# USCG/CBP as Facilitators

- **Facilitate** private sector actions to manage the impacts of the incident on the flow of trade
- Collect information regarding the shift of commercial maritime traffic so that we can **plan federal asset shifts**



Homeland  
Security



U. S. Customs and  
Border Protection



U.S.  
Coast Guard

Purpose

Goals

Stakeholders

Description

Results

# Industry Stakeholders Engaged in MTS Recovery Protocols

## PRIMARY SUPPORT GROUP

### Consultation:

- World Shipping Council
- Chamber of Shipping of America
- Int'l. Assn. of Independent Tanker Owners
- American Waterway Operators
- Cruise Lines Int'l. Assn. (ICCL)
- Passenger Vessel Assn.
- Baltic and Int'l. Maritime Council (BIMCO)
- Intercargo

## SECONDARY SUPPORT GROUP

### Consultation:

- American Assn. of Port Authorities
- Inland Rivers Ports & Terminals
- National Assn. of Waterfront Employers
- National Customs Brokers & Forwarders Assn.
- Association of American Railroads
- American Trucking Association
- American Assn. of Exporters & Importers
- U.S. Chamber of Commerce
- Business Roundtable
- Retail Industry Leaders Association



**Homeland  
Security**



U. S. Customs and  
Border Protection



**U.S.  
Coast Guard**

Purpose

Goals

Stakeholders

Description

Results

# Federal Government Stakeholders Engaged in MTS Recovery Protocols

## Department of Homeland Security

- USCG
- CBP
- TSA

## Department of Defense

- SDDC
- MSC
- USACE

## Department of Commerce

## Department of Transportation

- FHWA
- MARAD
- FRA

## Department of Justice

- FBI

## Department of State

## Department of Energy

- FERC



**Homeland  
Security**



U. S. Customs and  
Border Protection



**U.S.  
Coast Guard**

Purpose

Goals

Stakeholders

Description

Results

### COMMUNICATION FLOW CHART

The flow chart illustrates the communication structure for the National Incident Management System (NIMS). It shows the flow of information from the President and SEC DHS down to various federal, state, and local agencies. Key components include the National MTSRU, National PFO, and various command centers like the National PFO, JFO(s), and Local Emergency Operations Center.

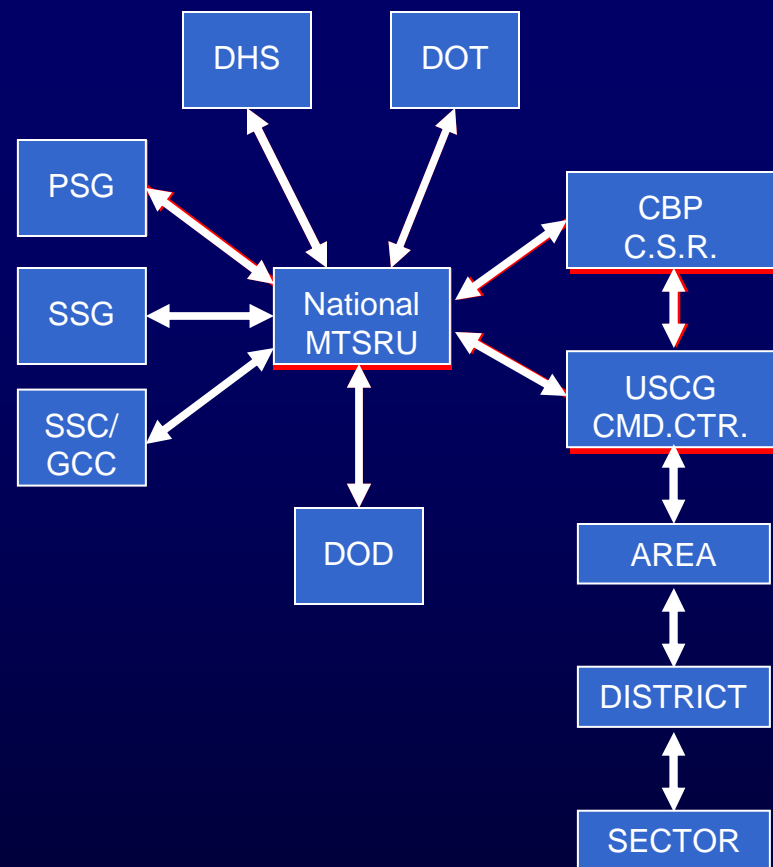
```
graph TD
    President[President] <--> SEC DHS[SEC DHS]
    President --> HSC DRG[HSC DRG]
    SEC DHS --> A/S DRG[A/S DRG]
    SEC DHS --> National PFO[National PFO]
    A/S DRG <--> National PFO
    National PFO --> JFOs["JFO(s)  
FCO(s)/FRC(s) SCO(s) SFO(s)"]
    JFOs <--> State EOC[State Emergency Operations Center]
    State EOC <--> Local EOC[Local Emergency Operations Center]
    JFOs <--> NOC["NOC  
IMPT  
NICC  
I & A  
WATCH  
NRCC"]
    NOC <--> CBP CSR[CBP C.S.R.]
    NOC <--> USCG CMDCTR[USCG CMD.CTR.]
    NOC <--> National PFO
    CBP CSR <--> USCG CMDCTR
    CBP CSR <--> National MTSRU[National MTSRU]
    USCG CMDCTR <--> National MTSRU
    USCG CMDCTR <--> AREA[AREA]
    AREA <--> DISTRICT[DISTRICT]
    DISTRICT <--> SECTOR[SECTOR]
    National MTSRU <--> DHS[DHS]
    National MTSRU <--> DOT[DOT]
    National MTSRU <--> DOD[DOD]
    National MTSRU <--> PSG[PSG]
    National MTSRU <--> SSG[SSG]
    National MTSRU <--> GCCSCC["GCC/SCC"]
    PSG <--> SSG
    GCCSCC -.-> SSG
```





# Initial MTS Recovery Protocol Actions

1. **Decide to activate Protocols (USCG/CBP)**
2. **Determine MTS constraints from other federal partners**
3. **Communicate NROM decisions and constraints to Primary Support Group**
4. **Request Primary Support Group mitigation plans**



**Homeland  
Security**



U. S. Customs and  
Border Protection



**U.S.  
Coast Guard**

Purpose

Goals

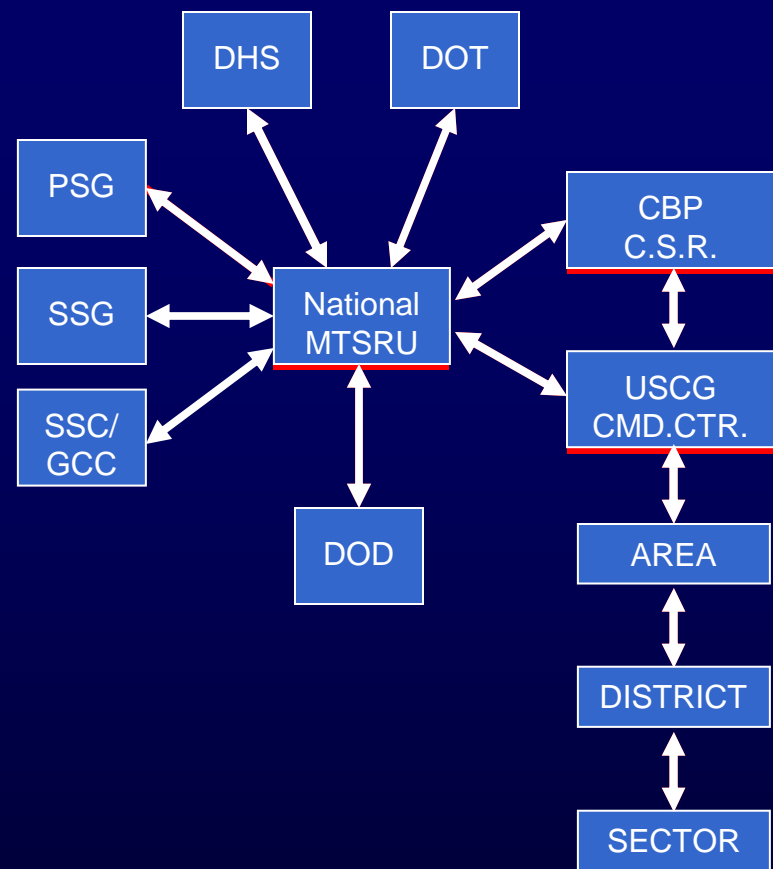
Stakeholders

Description

Results

# Initial MTS Recovery Protocol Actions

5. Identify critical cargo movements from DOD (SDDC, MSC) and FERC
6. Inform Primary Support Group of critical cargo movements
7. Identify carrier mitigation plans from Primary Support Group
8. Inform TSA and DOT (FRA, FHWA) of carrier mitigation plans



**Homeland  
Security**



U. S. Customs and  
Border Protection



**U.S.  
Coast Guard**

Purpose

Goals

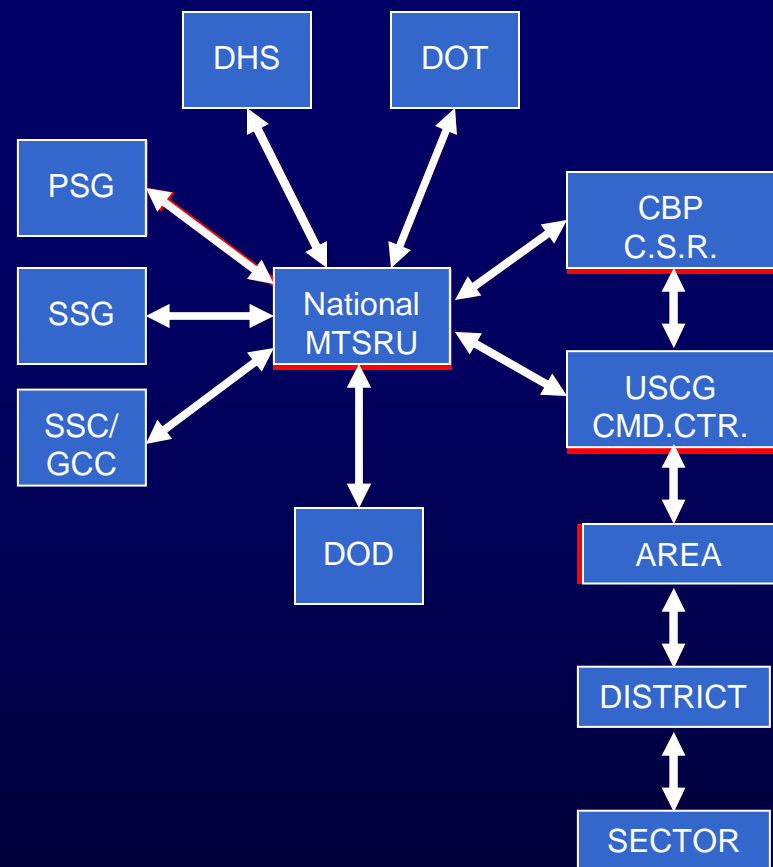
Stakeholders

Description

Results

# Initial MTS Recovery Protocol Actions

9. Identify inland carrier capabilities and constraints
10. Identify CBP and USCG resources available for deployment
11. Notify Primary Support Group of inland carrier and DHS capabilities



**Homeland  
Security**



U. S. Customs and  
Border Protection



**U.S.  
Coast Guard**

Purpose

Goals

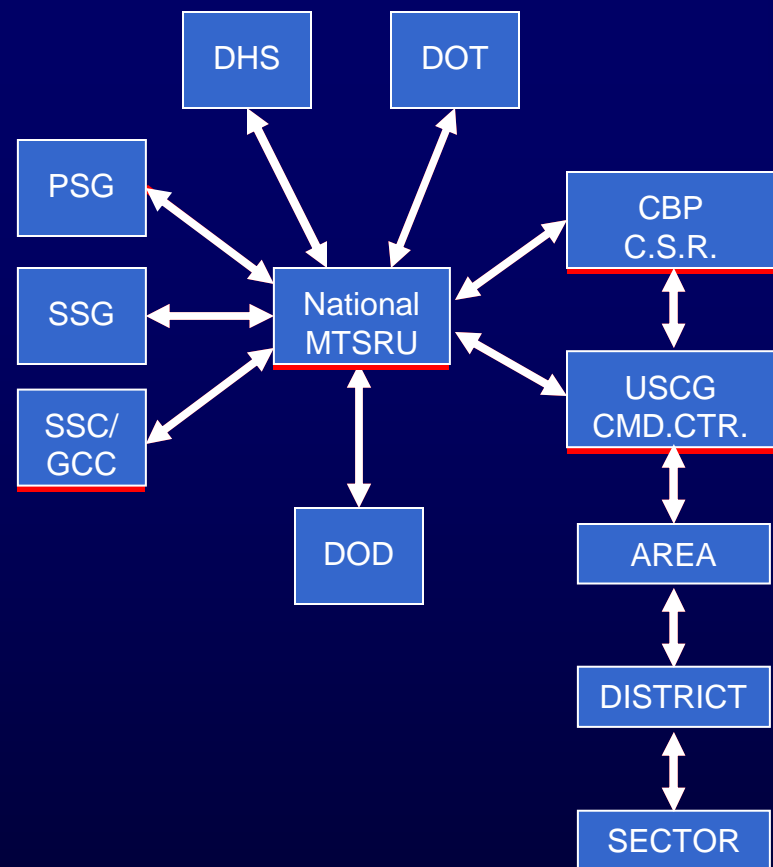
Stakeholders

Description

Results

# Initial MTS Recovery Protocol Actions

- 12. Confirm carrier mitigation plans from Primary Support Group**
- 13. Inform broad community of mitigation plans**
  - Federal – DHS, DOD, DOT, DOJ, DOE, DOC
  - State and Local Governments
  - Industry – Secondary Support Group
  - Public via media
- 14. Redeploy CBP and USCG resources**



**Homeland  
Security**



U. S. Customs and  
Border Protection



**U.S.  
Coast Guard**

Purpose

Goals

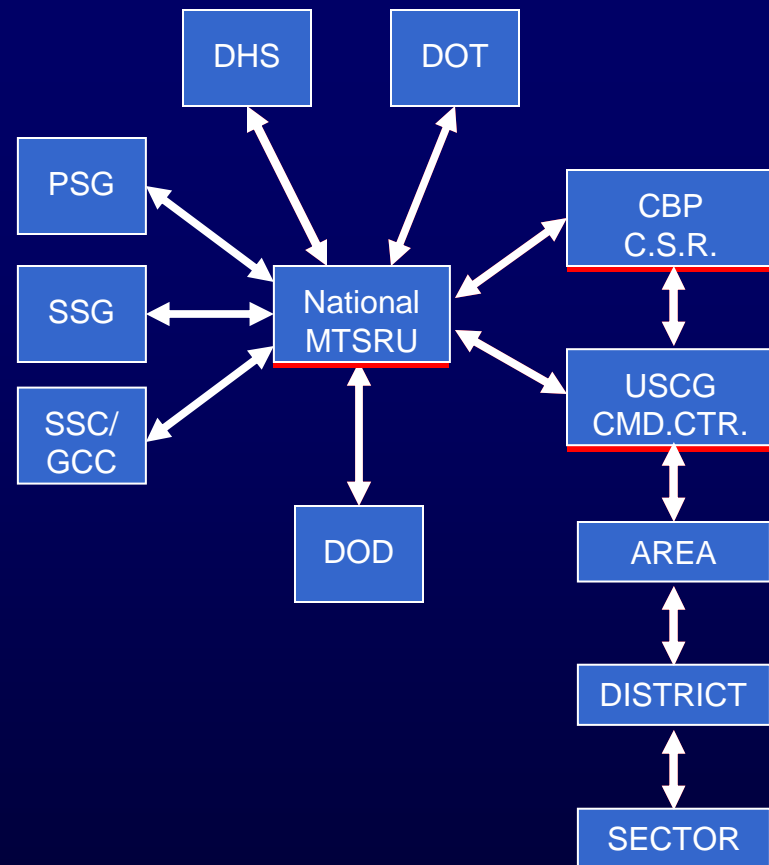
Stakeholders

Description

Results

# Initial MTS Recovery Protocol Actions

- 15. Identify additional security requirements**
- 16. Coordinate additional security with DHS, DOJ, State and Local Law Enforcement**
- 17. Monitor status of MTS and identify industry concerns**



**Homeland  
Security**



U. S. Customs and  
Border Protection



**U.S.  
Coast Guard**

Purpose

Goals

Stakeholders

Description

Results

# Expeditious MTS Recovery

By following the MTS Recovery Protocol, the USCG, CBP, and other federal agencies, informed with pertinent and timely information from affected stakeholders, will communicate more efficiently and effectively, resulting in a more expeditious MTS recovery that mitigates the detrimental effects of a disruption in trade.



**Homeland  
Security**



U. S. Customs and  
Border Protection



**U.S.  
Coast Guard**

Purpose

Goals

Stakeholders

Description

Results



**Homeland  
Security**



U. S. Customs and  
Border Protection



**U.S.  
Coast Guard**

# Back-up Slides



**Homeland  
Security**



U. S. Customs and  
Border Protection



**U.S.  
Coast Guard**



# COMDTINST

**Provides guidance for coordination of maritime recovery operations following an incident:**

- Defines CG roles and responsibilities to facilitate MTS recovery
- Establishes CG organizational elements to address MTS recovery within a NIMS structure
  - Marine Transportation System Recovery Unit (MTSRU) at national, regional or district, & local levels
  - MTS Recovery Assist Teams (MTSRATs)
- Promulgates Essential Elements of Information (EEI) baseline
- Describes MTS stakeholder communication procedures to support high level coordination of MTS Recovery Protocol
- Provides integrated planning for MTS recovery
- Ensures that MTS recovery is critical element of planning at all organizational levels within the Coast Guard



**Homeland  
Security**



U. S. Customs and  
Border Protection



**U.S.  
Coast Guard**

**Purpose**

**Goals**

**Stakeholders**

**Description**

**Results**

# Protocol Participation Matrix

PROTOCOL PARTICIPATION MATRIX																														
Organization	Primary Support Group								Secondary Support Group								Federal Government													
Protocol Process Stage	Consultation and Notification								Consultation								DHS			DOD			DOT			DOC	DOJ	DOS	DOE	
	WSC	COS	INTERTANKO	AWO	CLIA (ICCL)	PVA	BIMCO	INTERCARGO	AAPA	IRP&T	NAWE	NCB&FA	AAR	ATA	AAE&I	COC	BR	NAM	USCG	CEP	TSA	DDC	MSC	USACE	PHWA	MARAD	FRA	FBI	PERC	
1. Decided whether to activate Protocol																			X	X										
2. Determine MTS constraints from Federal Agency Partners																			X	X	X			X	X		X			
3. Communicate NROM Decisions	X	X	X	X	X	X	X	X																					X	
4. Request Carrier Mitigation Plans	X	X	X	X	X	X	X	X																						
5. ID DOD Critical Cargo Movements																			X	X		X	X							
6. Communicate Critical Cargo Movements	X	X	X	X	X	X	X	X											X	X										
7. ID Carrier Mitigation Plans	X	X	X	X	X	X	X	X											X	X										
8. Inform DOT & TSA of Carrier Mitigation Plans																			X	X	X				X		X			
9. ID Inland Carrier Capacities Constraints				X																	X			X	X		X			
10. ID CBP & USCG resource availability																			X	X			X							
11. Communicate DHS Capabilities	X	X	X	X	X	X	X	X																						
12. Confirm Carrier Mitigation Plan	X	X	X	X	X	X	X	X																						
13. Confirm Mitigation Plan									X	X	X	X	X	X	X	X	X	X	X	X	X	X	X	X	X	X	X	X	X	X
14. Redeploy DHS Resources																			X	X										
15. ID Additional Security Resource needs																			X	X								X		
16. Coordinate Additional Security Resource Needs																			X	X	X					X		X		
17. Monitor Status of MTS																			X	X	X			X	X		X			



**Homeland Security**



U. S. Customs and Border Protection



**U.S. Coast Guard**

Purpose

Goals

Stakeholders

Description

Results