



# Port of Gulfport Restoration Program

November 17, 2009



AAPA PORT FACILITIES ENGINEERING



# Agenda



- Gulfport Restoration Program
  - Description of Program
  - Supporting Infrastructure
    - National / Regional
    - Local
  - Current Program Status
- Next Steps





# Build A Sustainable Restoration of the Port of Gulfport for the next 100 Years

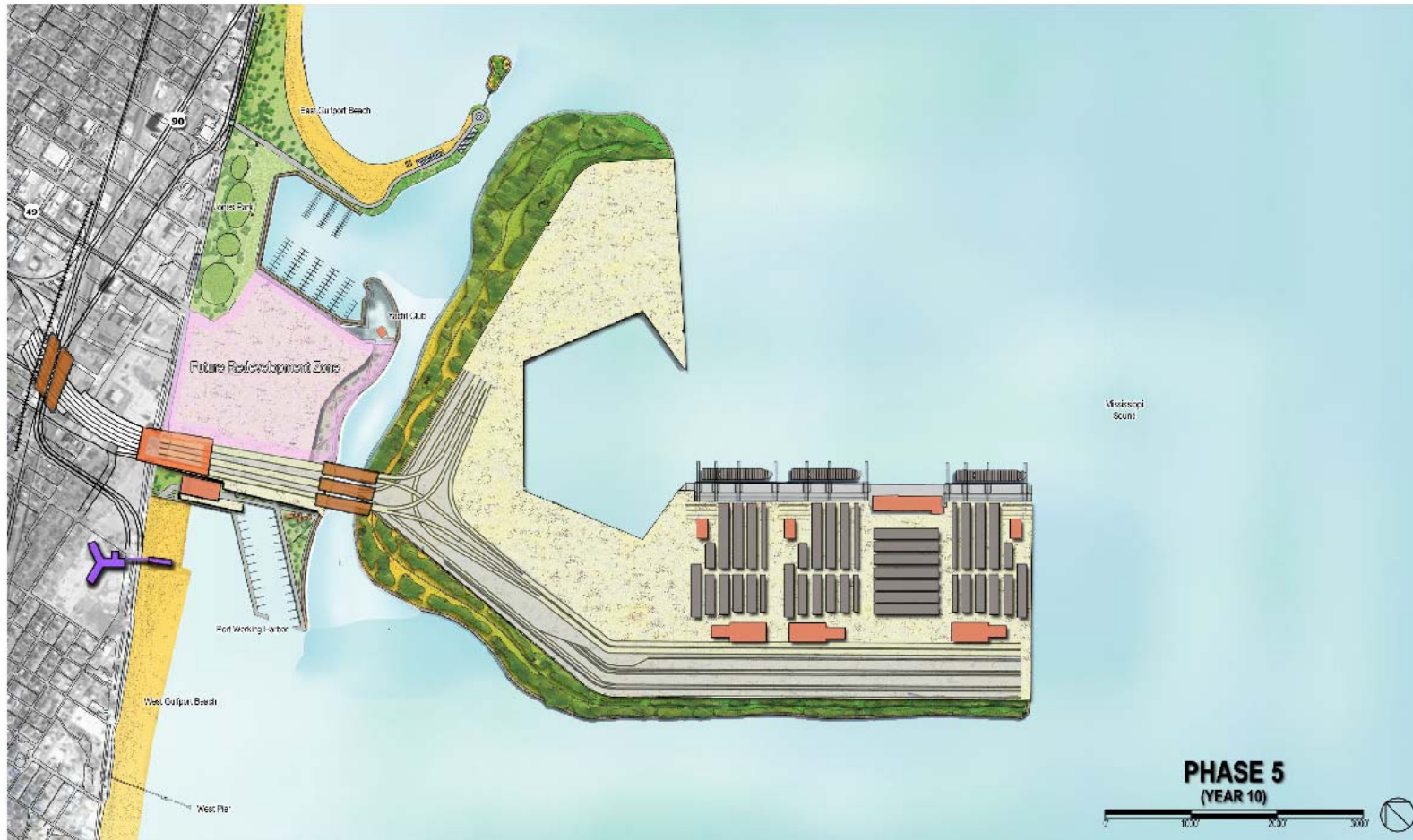


# Port of Gulfport 2006



**CH2MHILL**

# Baseline Plan

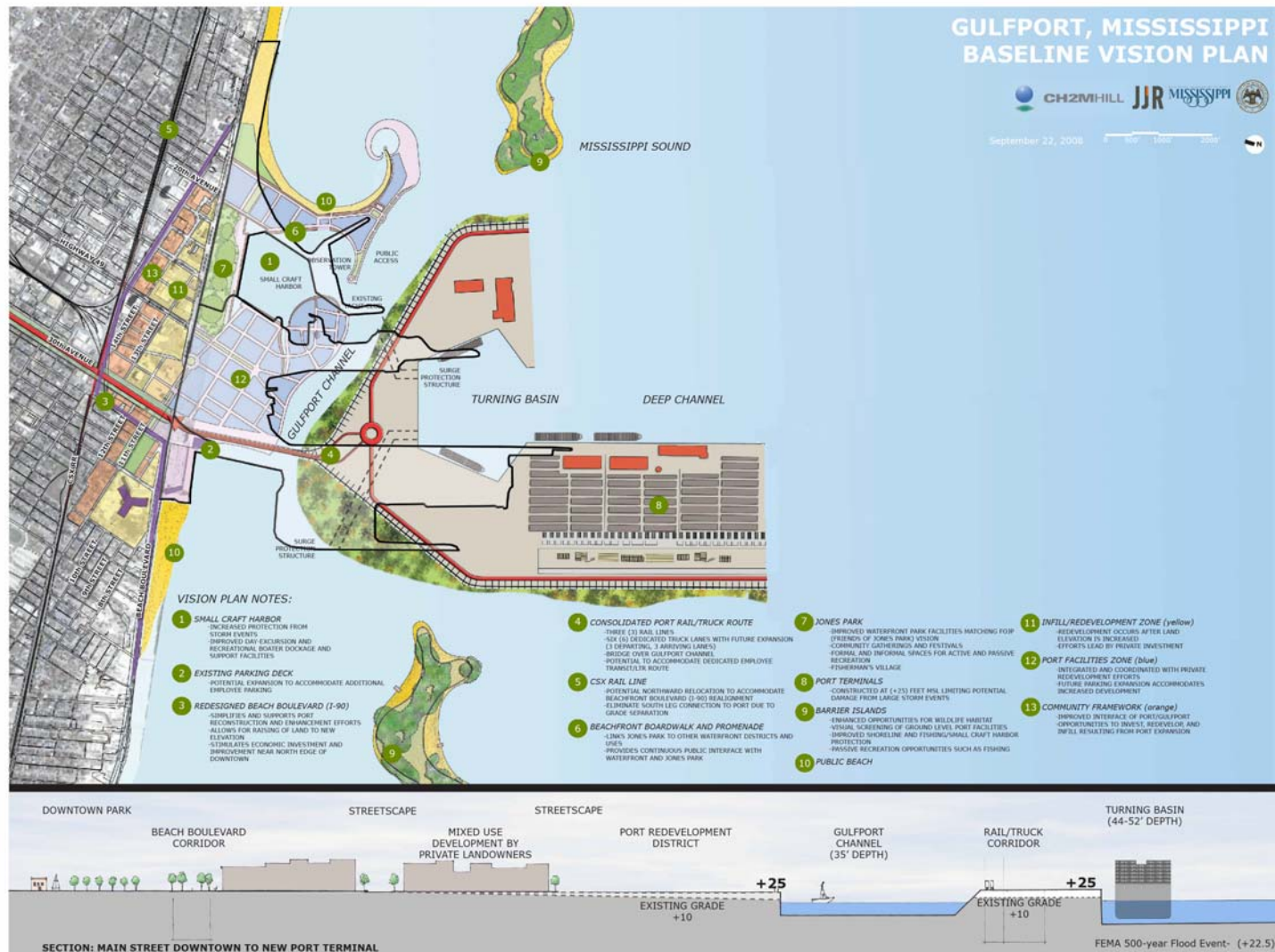


Gulfport Vision Plan Phase 5



CH2MHILL

# Comparison to Existing





# Private Investment Potential



# 10-Year Vision



# Expanded Business Model



# 50-Year Vision





# Supporting Infrastructure National and Regional





# US Interstate Highway System





# MS Interstate Road Infrastructure





# US Class 1 Rail System

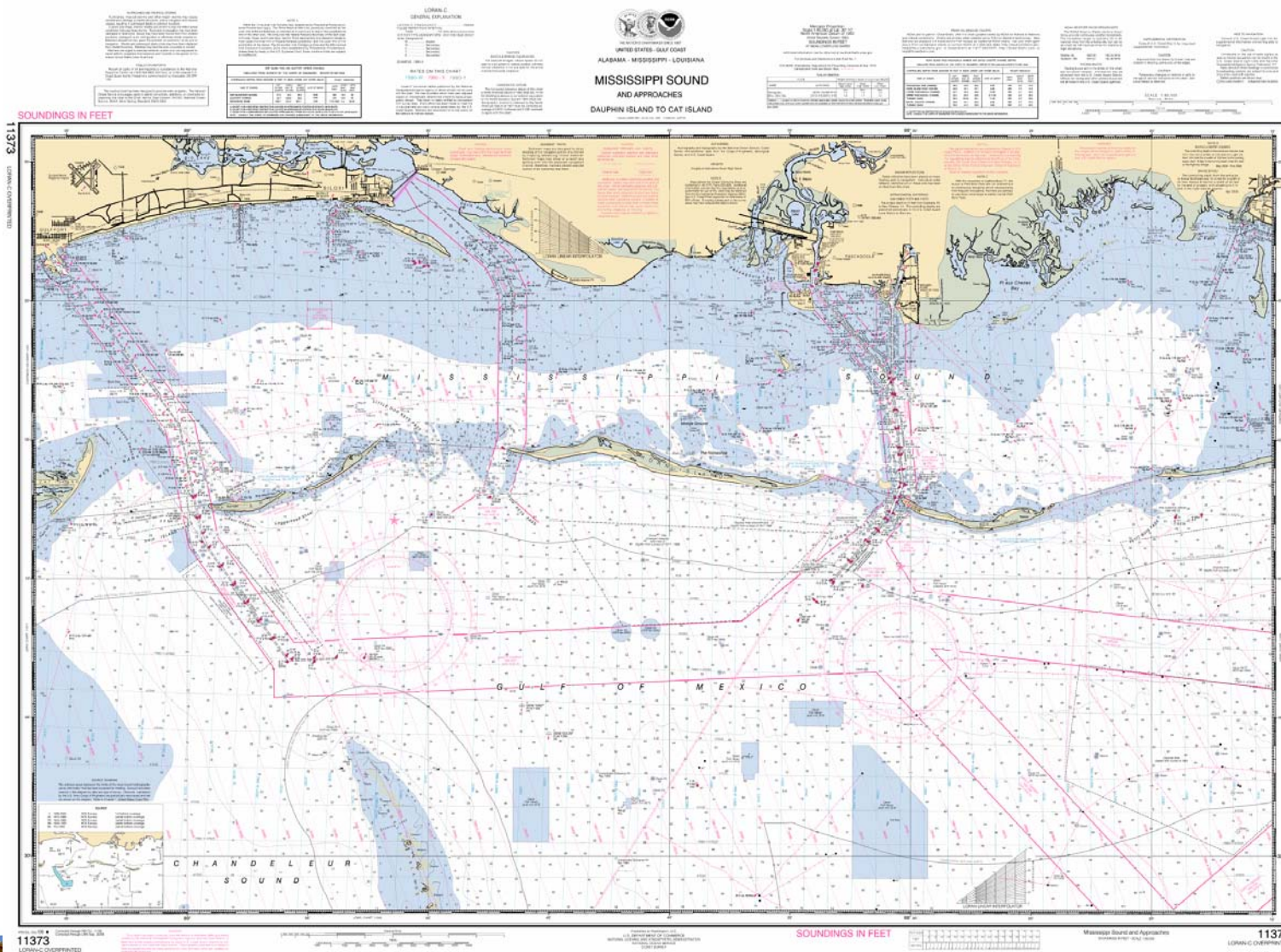




# Federal Navigation Channel



mississippi development authority  
**MISSISSIPPI**  
mississippi.org



**CH2MHILL**

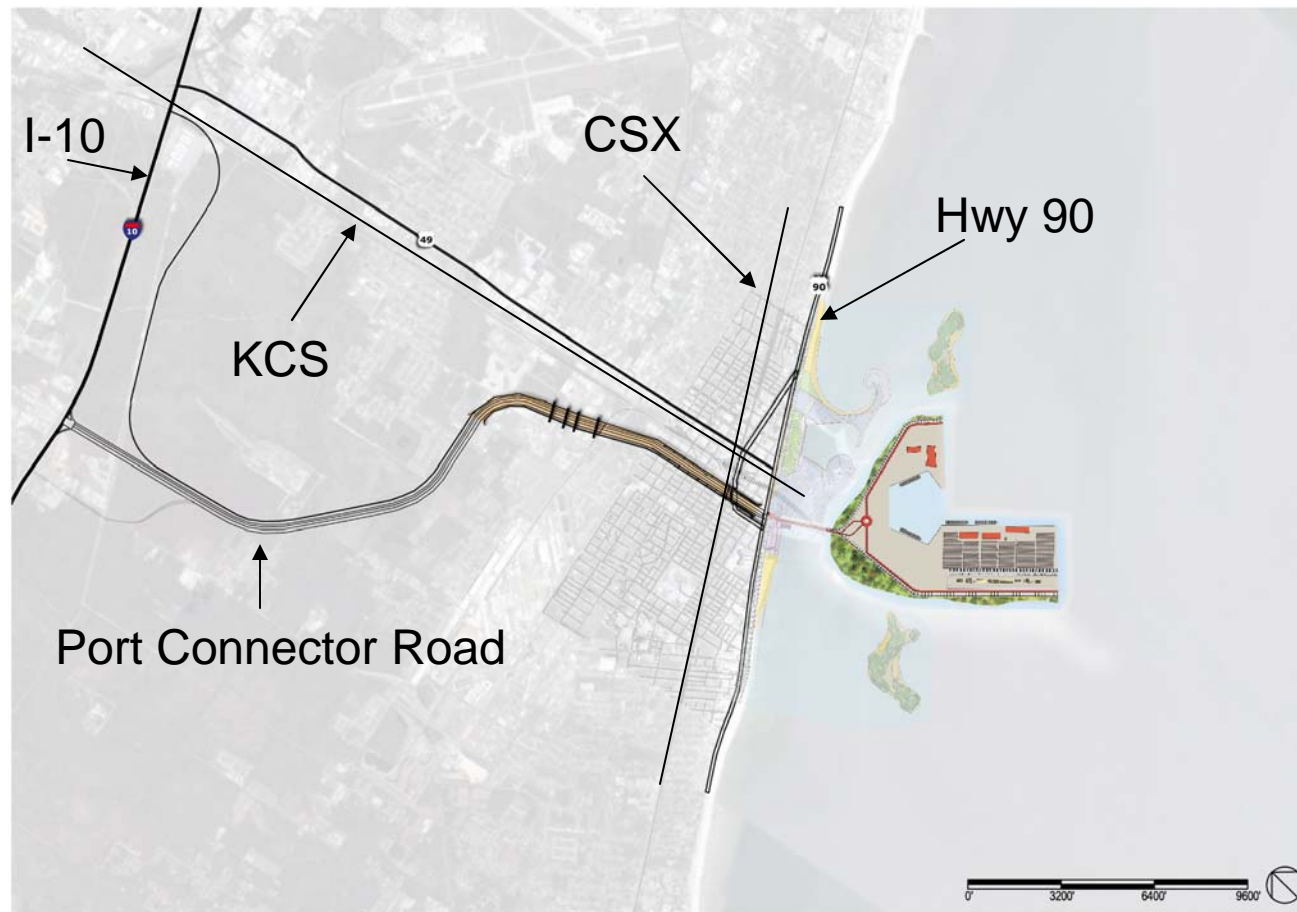


# Supporting Infrastructure Local



**CH2MHILL**

# Road and Rail Infrastructure



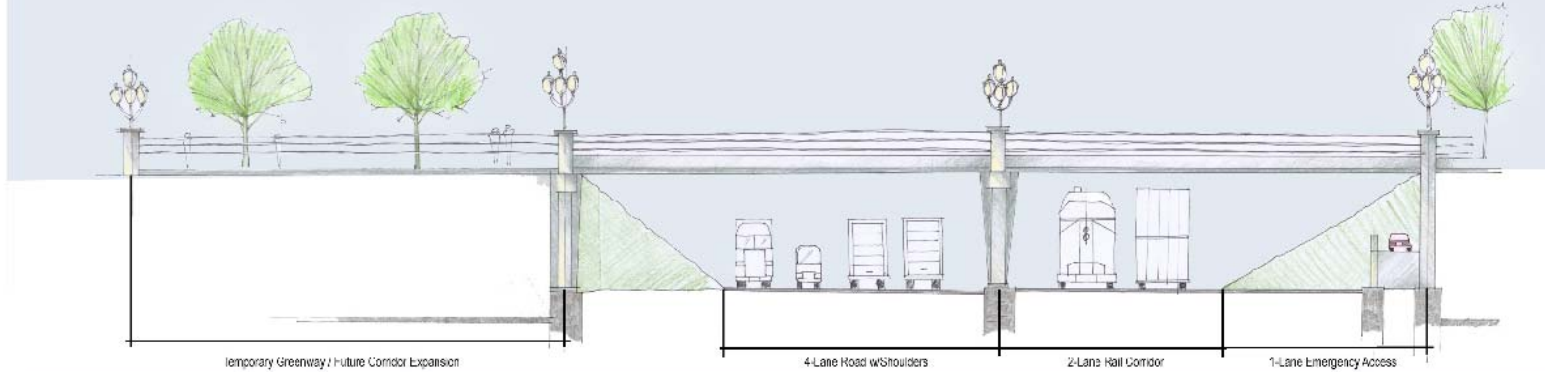
Gulfport Vision Plan



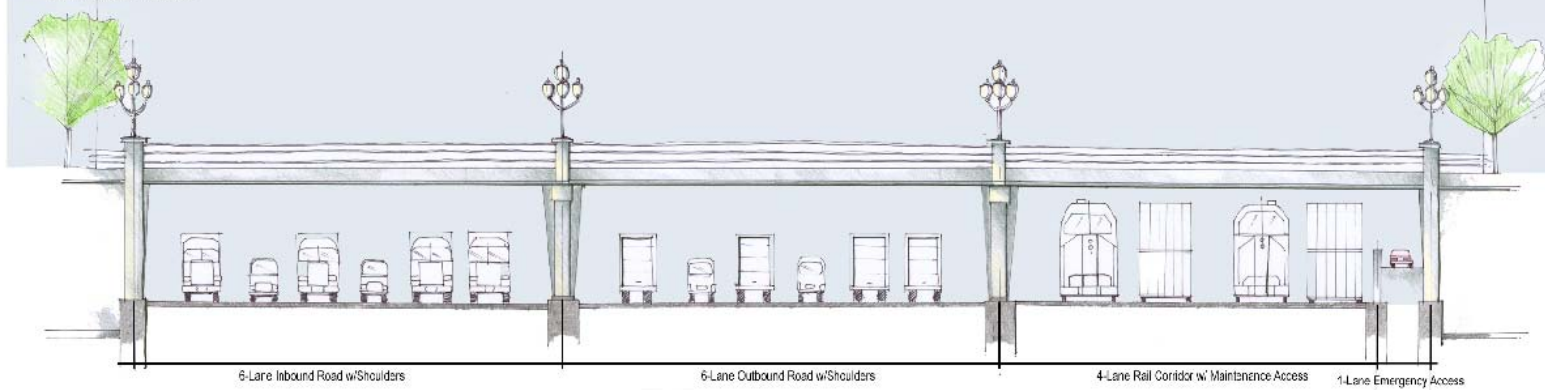


# Transportation Corridor

20-Year Vision



40-Year Vision



Gulfport Vision Plan Transportation Corridor Sections



CH2MHILL



# Transportation Corridor



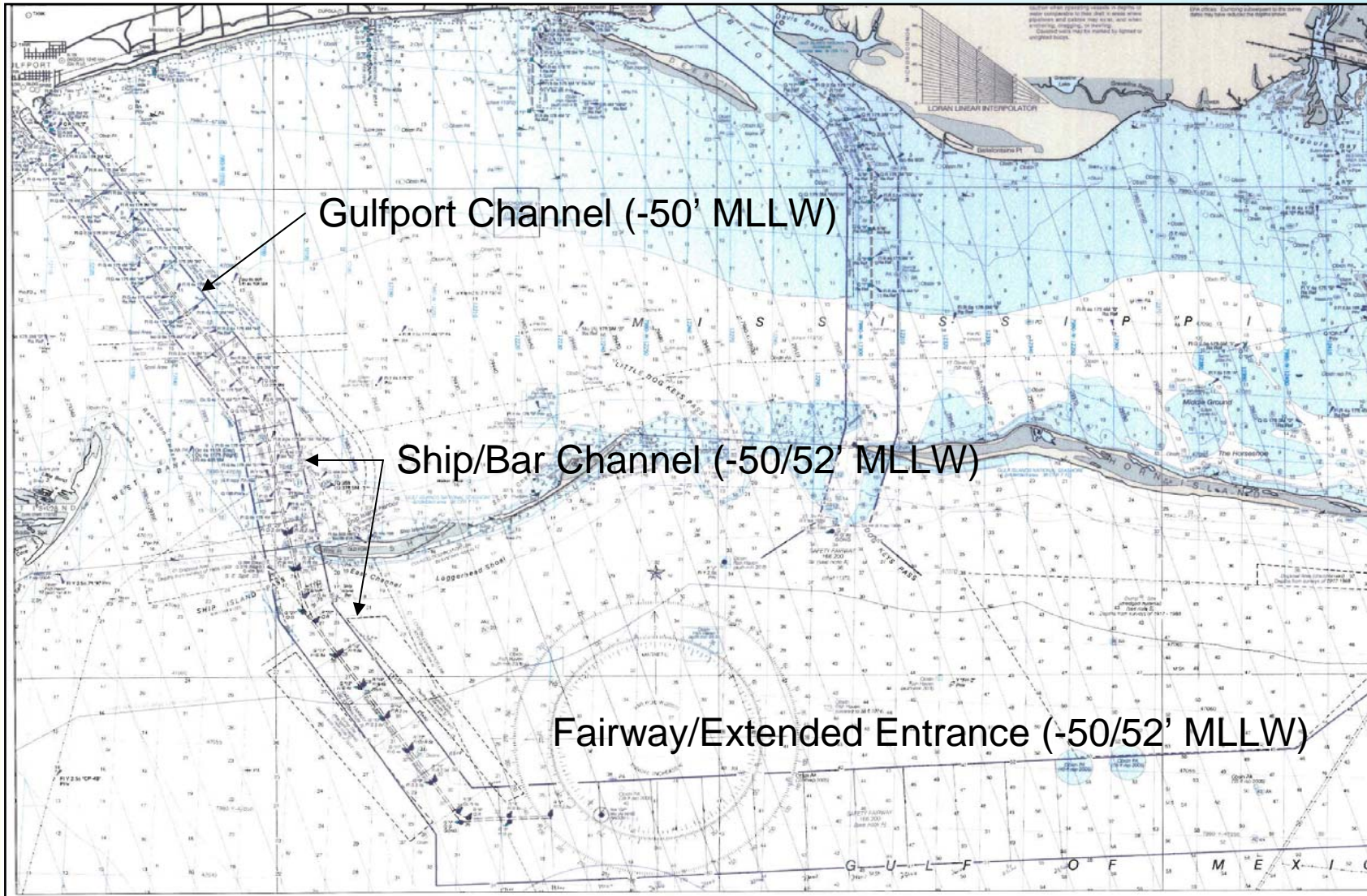


# Transportation Corridor

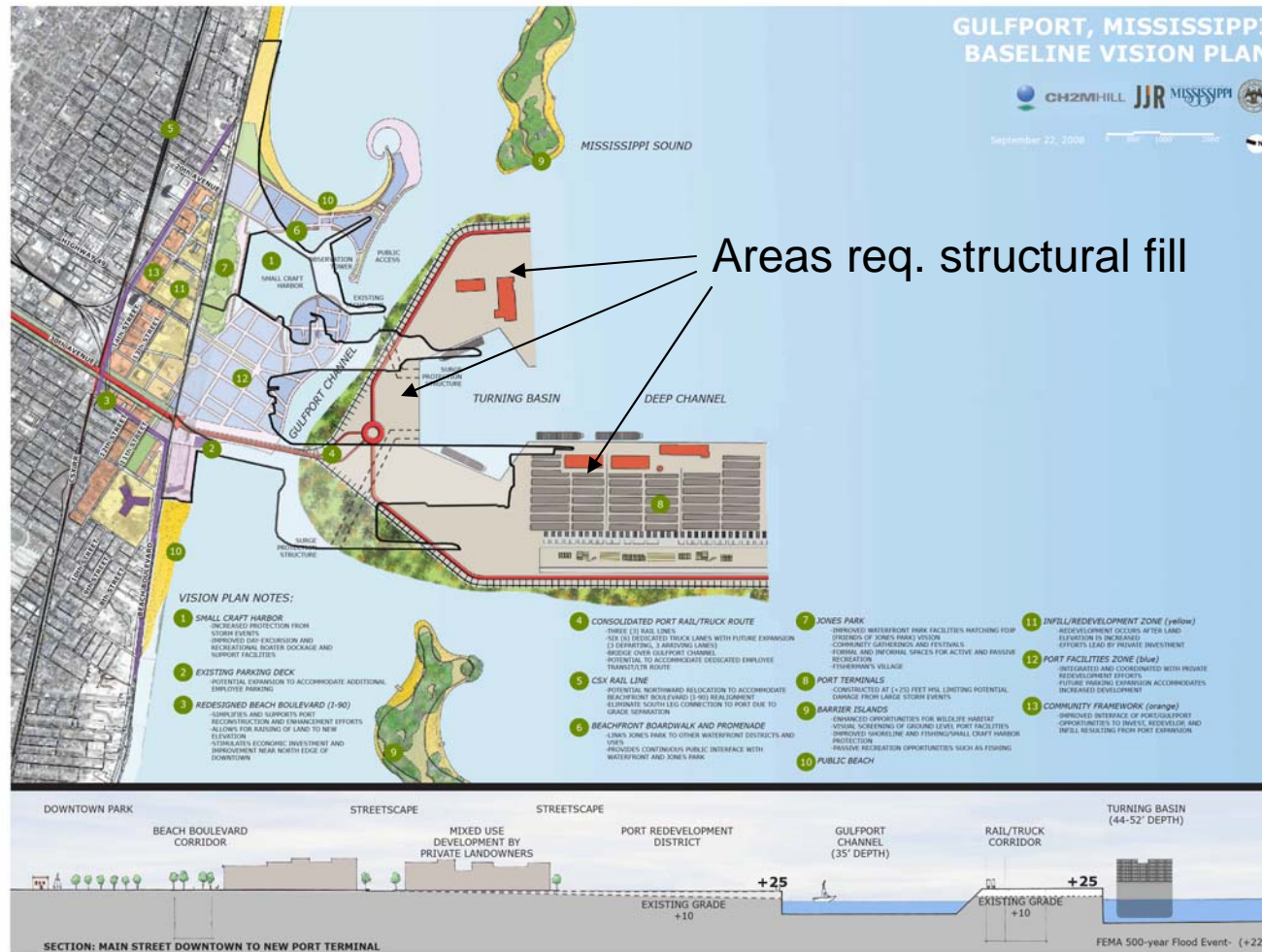


**CH2MHILL**

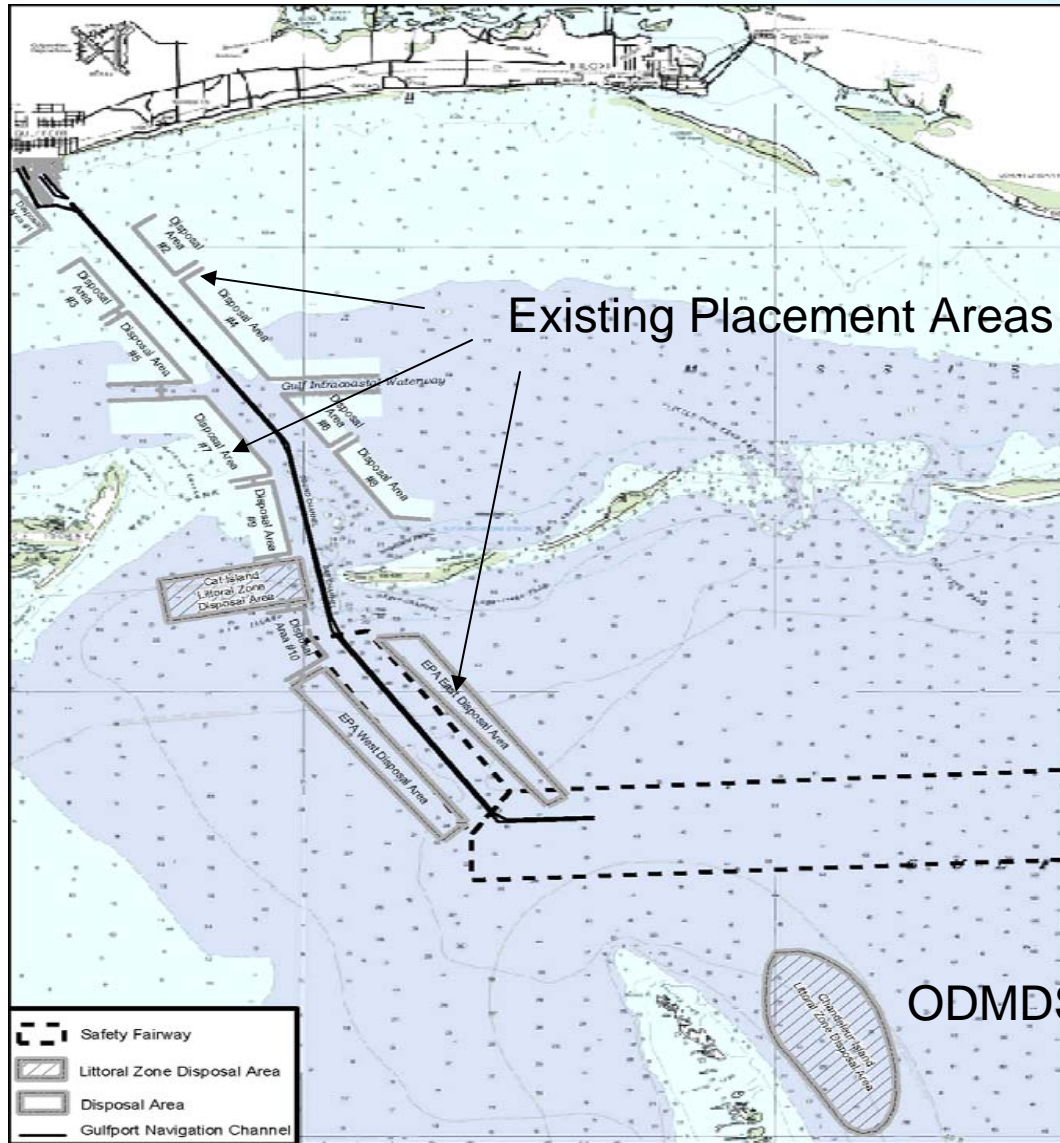
# Gulfport Channel Overview (NOAA Chart)



# Alternatives for Beneficial Use



# Placement Areas





# Current Program Status



# Multi-Phase Program

- Phase 1 – Program Development.
- Phase 2 – Tasks for Immediate Execution.
  - Re-construction of port with existing permits.
  - Permitting for new port configuration.
- Phase 3 – Construction of Vision Plan.





# Current Progress

## ● Major Milestones

- Selected Program Manager through competitive process (June 08).
- Performed Community Outreach.
- Approved new vision for Port Restoration Program.
- Initiated HUD Compliance and Reporting.
- Received HUD amendment approval documenting new concept (October 24, 2008).
- Signed Sub Recipient Agreement with MSPA (December 23, 2008).
- CH2M HILL Program Mgmt. assigned to MSPA (December 23, 2008).
- MSPA awarded 60-Acre Fill Project (January 12, 2009).
- Engineering Services Procurement initiated (March 2009).
- MSPA-USACE PAS Agreement Executed (September 2009).





# Current Progress (continued)

## ● IDIQ Contracts Issued:

- General Engineering and Design Services
- Environmental Services
- Utility and Underground Surveying
- Geotechnical Site Investigation Services
- Construction Management Services
- Construction Materials Testing

## ● IDIQ Contracts in progress:

- Aerial Survey and Mapping
- Coastal Engineering and Design Services
- Dredging Engineering Services
- Rail Operations and Planning Services
- General Utility Engineering Services



# Plan Going Forward

- Execute available construction activities.
- Advertisement of additional RFQs.
  - Construction IDIQs
  - Electrical Utilities Engineering
  - GIS Services
  - Wet Utilities Engineering
- USACE approval on final 24-Acre fill project.
- Execution of 10-Year Work Plan.
- Complete PAS work to support Reconnaissance Study.
- Initiate NEPA process for Port restoration permits.





# Plan Going Forward

- Encourage MDOT construction of connector road.
- Encourage USACE dredging of the navigation channel.
- Encourage CSX and KCS participation.
- Plan and construct infrastructure improvements.





# In Conclusion





# Unique Opportunities

- Only hurricane resistant port on Gulf Coast.
- Good, reasonable-cost labor pool.
- Modern more efficient operation.
- Direct access to interstate highway system.
- Direct access to national rail system.
- Potential future short-sea shipping opportunity.
- Significant support in local community.
- Active State Government support.
- Economic Stimulus - Very high Benefit/Cost Ratio.





# Key Elements of Success

- Develop of road system on time.
  - MS DOT supports the new vision.
- Develop rail support system on time.
  - CSX and KCS provide capital improvements
- Deepen channel serve carrier requirements.
  - US Congressional Delegation provides appropriation.
- Community Support for total program.
  - Will aid in all permitting elements (time and cost)



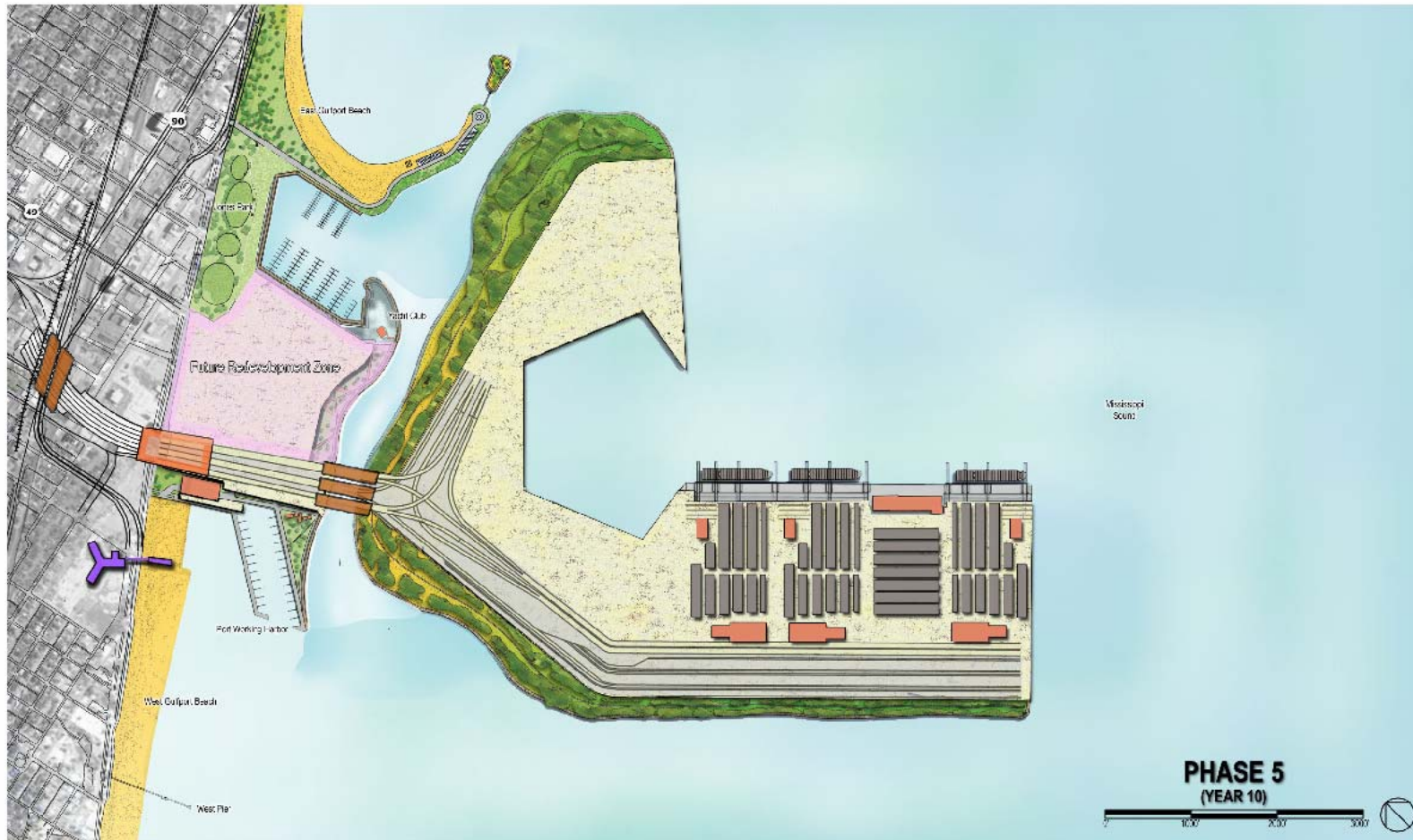


Thank you for your attention.

Questions and Comments



# Baseline Plan



Gulfport Vision Plan Phase 5



CH2MHILL