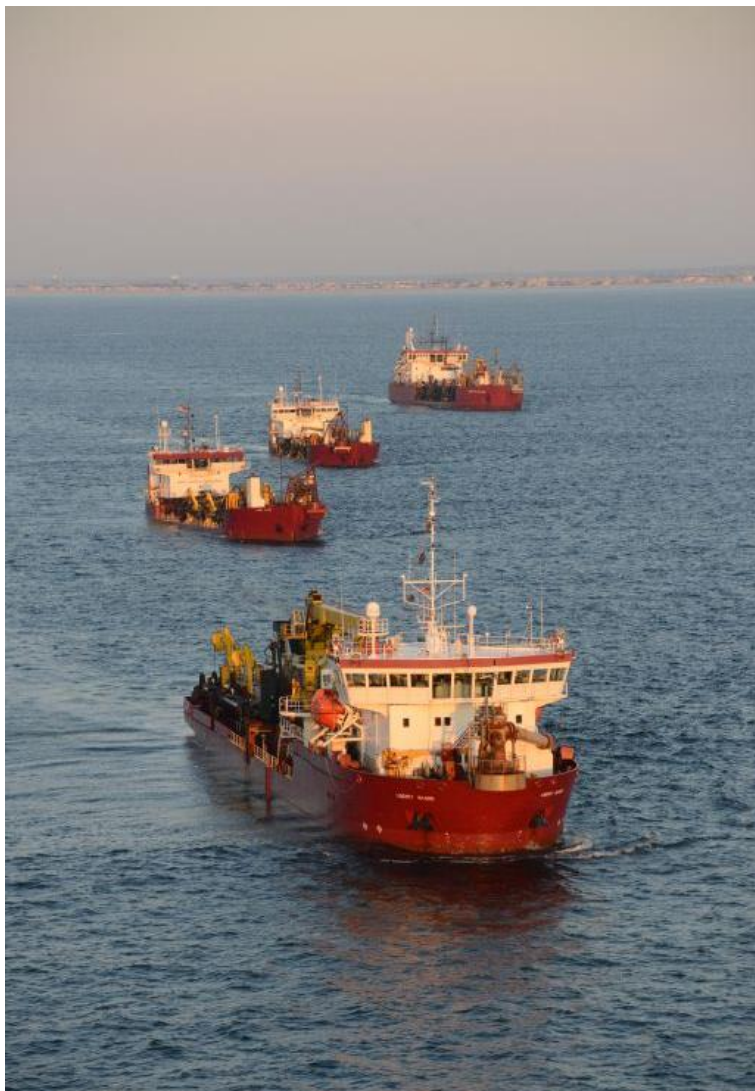


AAPA HN MIAMI - DREDGING ISSUES





PARTNERING

- DCA/Corps HQ
- GPAA
- SAD
- NAD
- Great Lakes
- AAPA
- Regional Associations





TECHNICAL ISSUES

- Environmental Windows
- Safety – Utility Locations
- Long Distance Haul/Pump
- Contracting
- Scheduling
- RSM





WHY IS THIS IMPORTANT

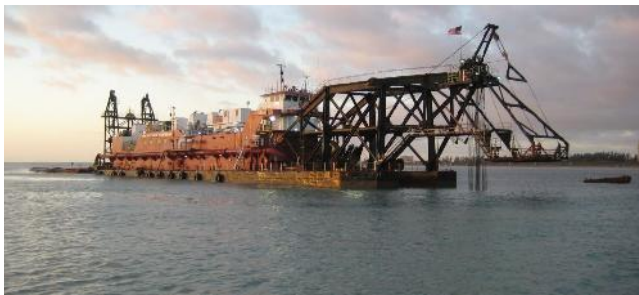
- Costs are huge, worthy of attention
- Execution and Efficiency of projects important
- Safety is paramount
- Added restrictions = Added cost
- How to attract investment in innovation
- We are the ones who do the work and bond it.
- We support research and clarity
- We understand our role





MARKET DRIVERS

- SANDY
- Louisiana Coastal
- Deep port work
- HMTF
- SBA





INNOVATIONS/ BEST PRACTICES

- New Equipment
 - 2 Hoppers, 2 Cutters, 2 Clams
- Cutterheads
- Dragheads
- Boosters
- Pipeline
- Enviro Techniques





PARTNERING NON- TRADITIONAL

- Governors
- FACA's
- Counties
- Mayors
- Academia
- NGO's
- CSO





DREDGERS PART OF THE TEAM

- Creative, entrepreneurial
- Engage us early before permits
- Utilization is important to all
- Marketplace is very dynamic and unformed, we have stake in it.





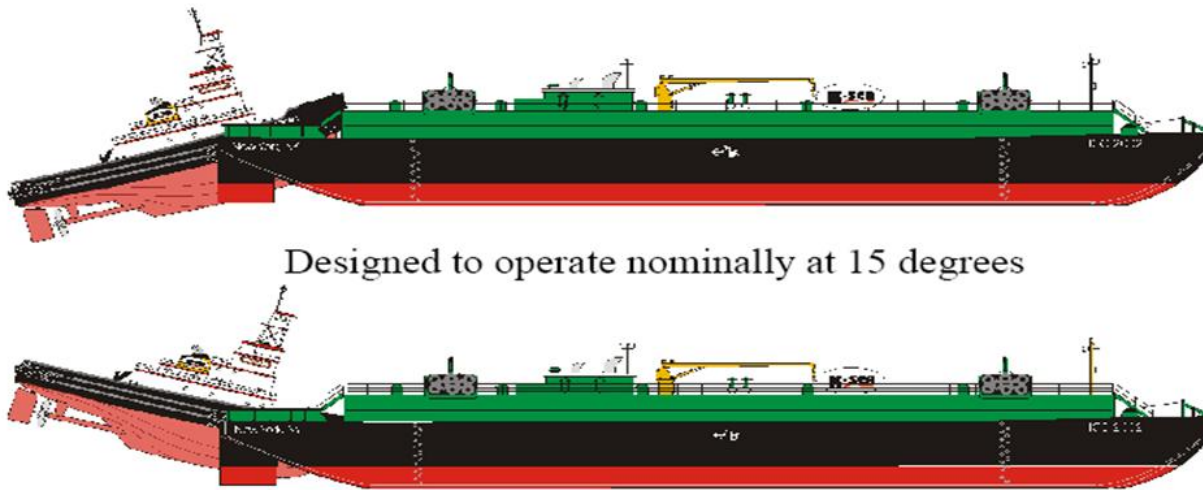
Placing Sand Filling in Lincoln Park Extension.
For Commissioners of Lincoln Park.
Great Lakes Dredge & Dock Company.
Photo Chicago Arch. Photo. Co.,
July 28th, 1931. Contract 15698. R-3237.



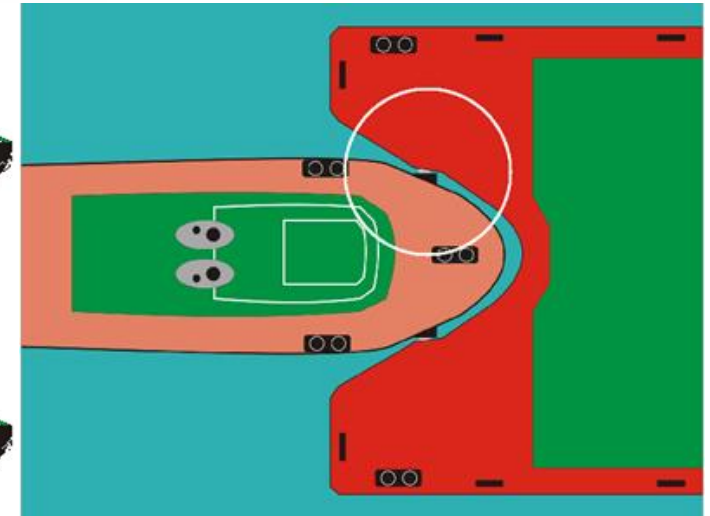




The ATB is the latest in a series of hopper dredge innovations that began at Great Lakes nearly 100 years ago.



Designed to operate nominally at 15 degrees



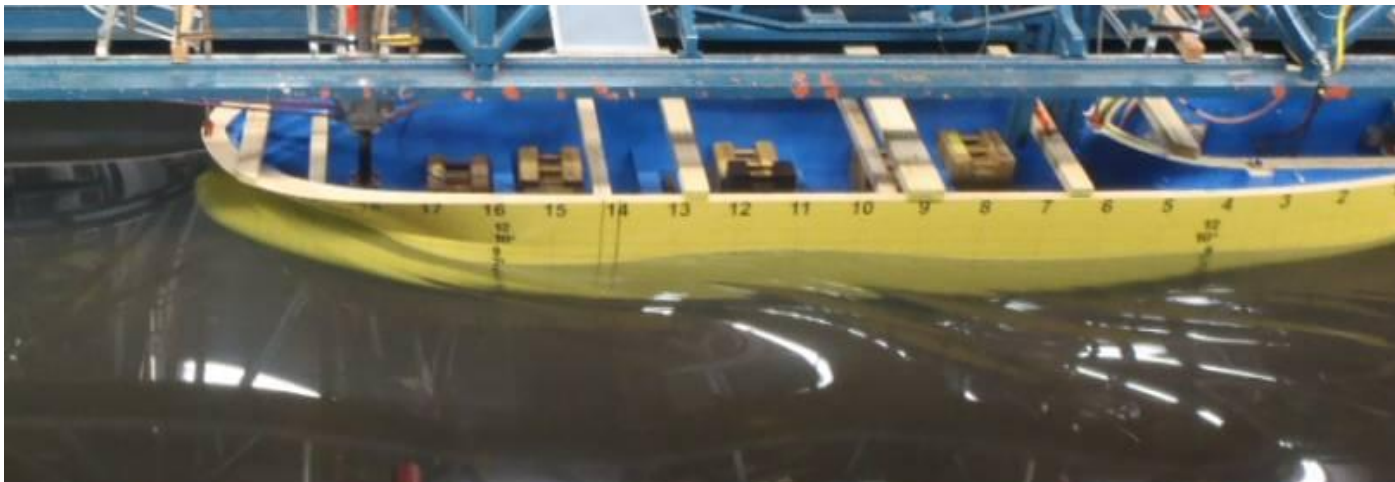
- Above left is a profile view of one ATB connection system, showing the motion that takes place.
- Above right is a plan view showing the connection.



Below are comparative model test photos of the Liberty Island and ATB, in the loaded condition at max speed.



The Liberty Island with her newly-installed bulbous bow.



The ATB. Note the difference in bow wave.







GREAT LAKES DREDGE & DOCK COMPANY, LLC

Thanks!

*Remember the worst answer to any question
about dredging is an anecdote.*

Have a dredging question? Ask a dredger.

