

PORT/MIAMI



FEBRUARY 2015

PORT/MIAMI

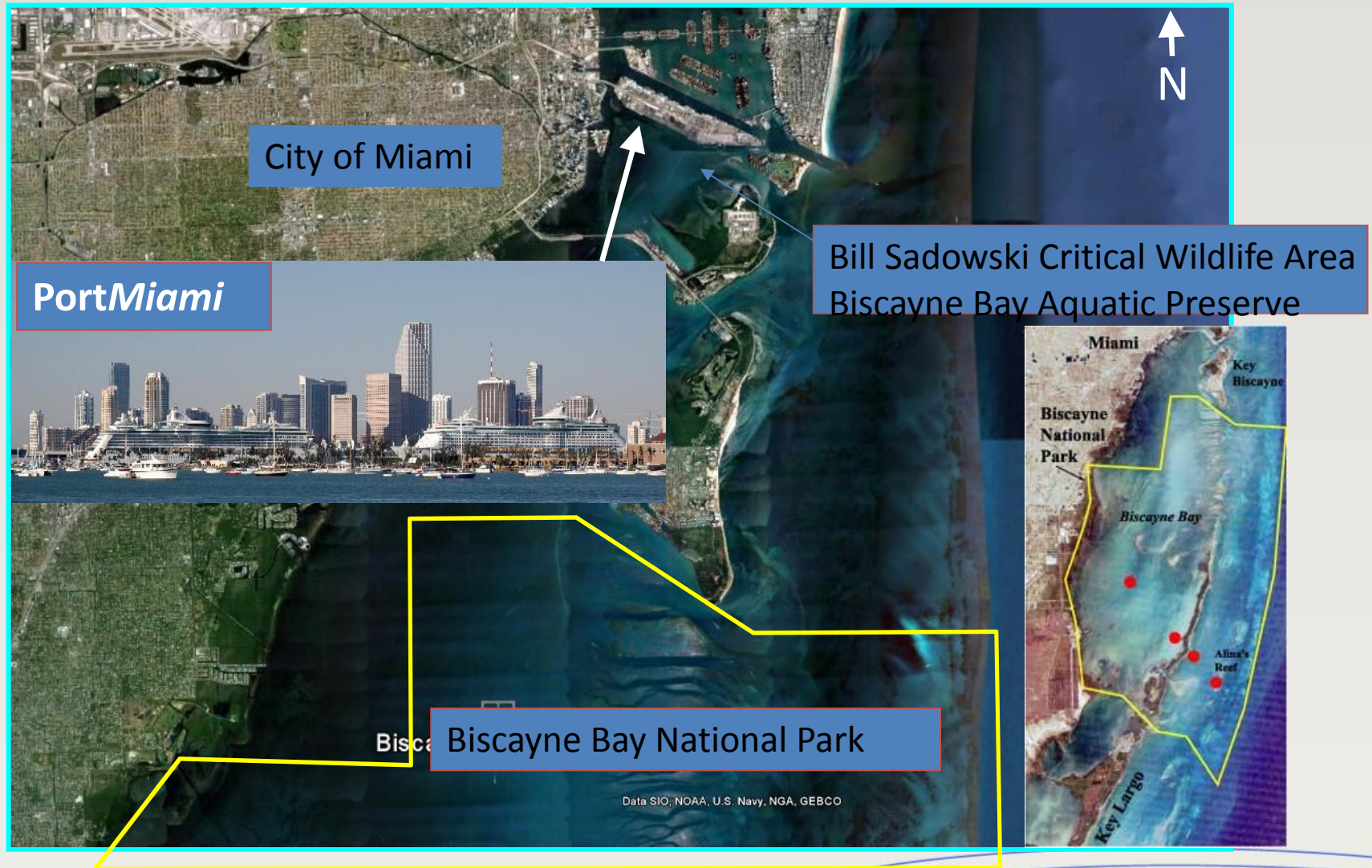
PortMiami Statistics

PortMiami is located in Miami-Dade County, one of the most diverse, multilingual populations in the U.S. making Greater Miami one of the world's most ideal centers for international trade and tourism

- The 12th Busiest Container Port in the United States
- Among the Top Container Ports in Florida – Almost 900,000 TEUs in 2014
- Cruise Capital of the World – More than **4.77 million passengers in 2014 (Another World Record!)**
- **167,000 daily passengers**
- **\$126.1 million** in revenue (per the CAFR)
- Economic Impact: **\$27 billion and 207,000** Direct/Indirect Jobs to South Florida



Project Area



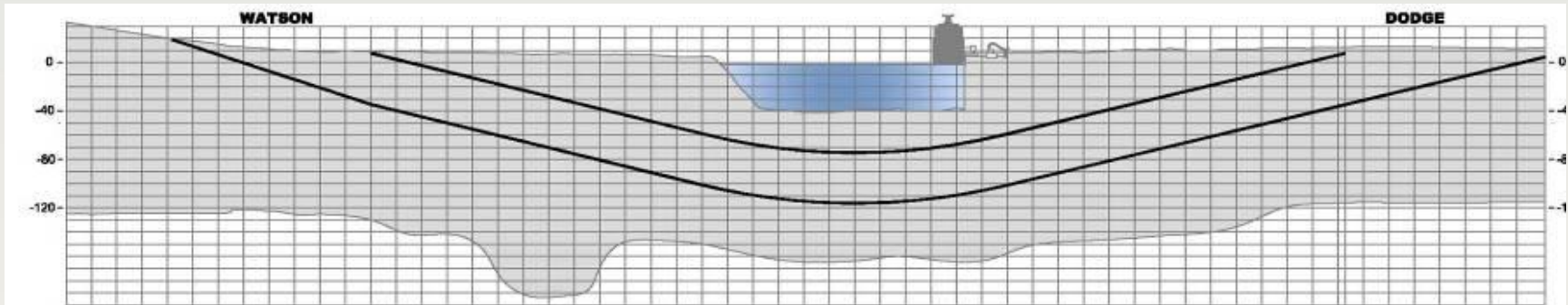
PORTMIAMI

Where we are Today

New Port Tunnel



- PPP with FDOT, MAT, City of Miami and MDC
- Two Twin-Tunnels - 3900 ft. long each
- +40 ft. under the bottom of Government Cut
- 5% Grade
- 5 cross passages

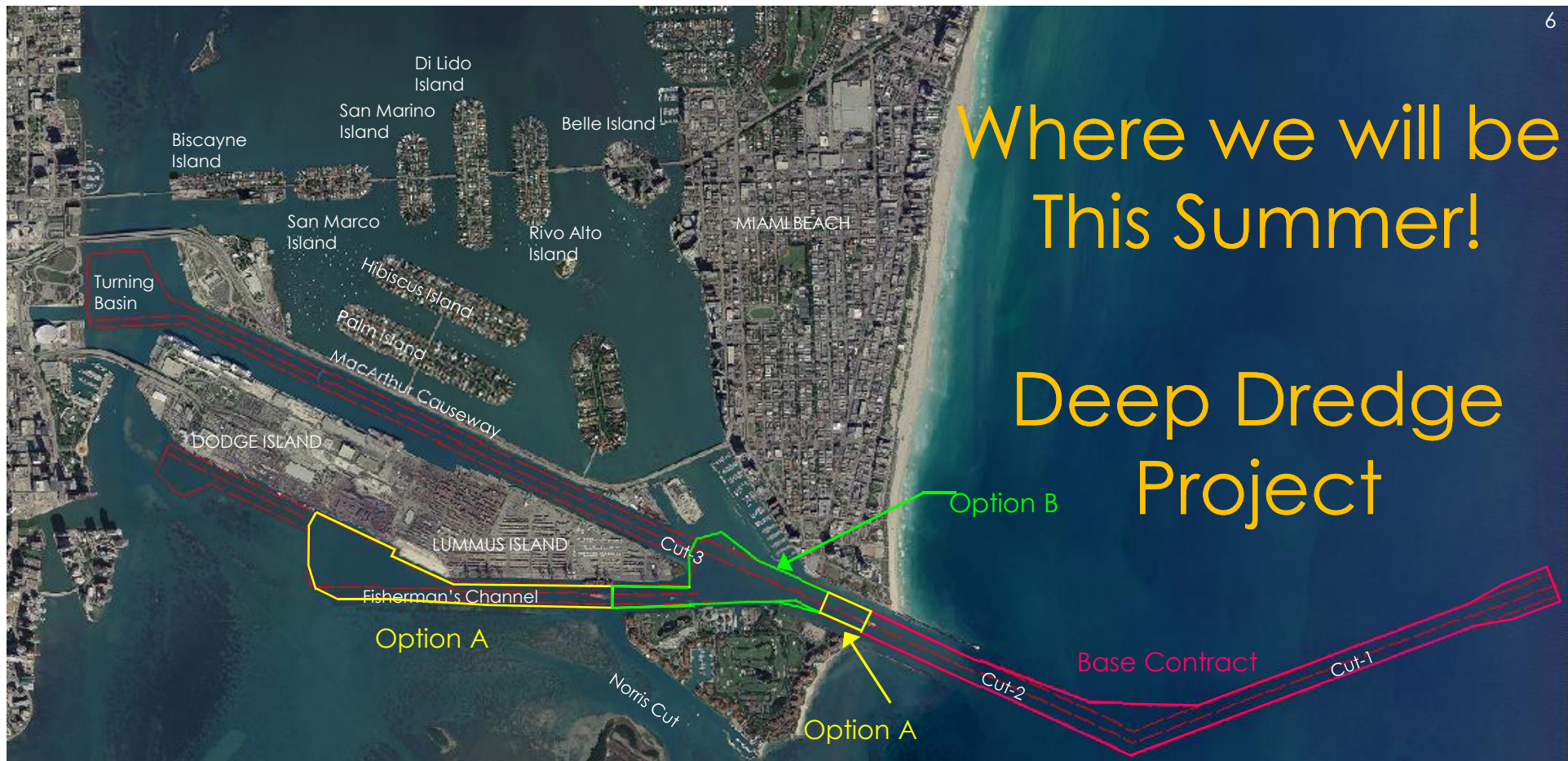


Where we are Today

New On-Port Intermodal Yard

- TIGER II Grant Recipient
- PPP with MARAD, DOT, FEC and MDC
- Bascule bridge rehabilitation
- Intermodal Yard – construction began July 2013 and completed in January 2015
- Unique – interim operations
- Next – CBP operations





Base Contract

Widen seaward portion of Cut-1 from 500 to 800 feet; deepen Cut-1 and Cut-2 from **-44 to -52** feet; reef and seagrass mitigation area construction.

Option A

Cut 3 station 0 to Cut 3 station 12 and Fisherman's Channel Station 17 to Lummus Island Turning Basin end; deepen from **-42 to -50 feet**

Option B

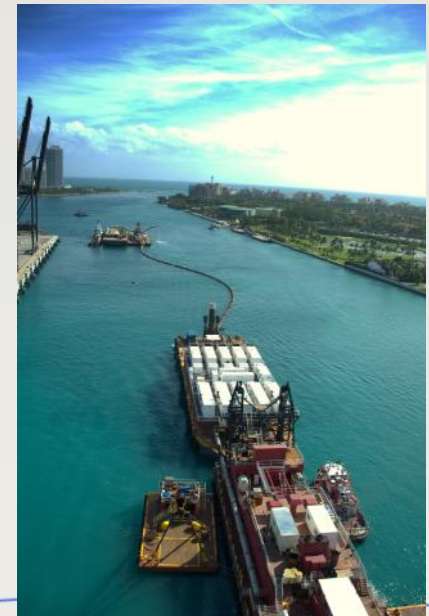
Cut 3 station 12 to Fisherman's Channel station 17; Local sponsor berthing areas F.C. station 8 to 17; deepen from **-42 to -50** feet



Project Scope



- **Approximately 5,000,000 CY of dredging**
 - EPA designated offshore disposal site
 - Beneficial re-use at former borrow site for seagrass mitigation
- **Estimate 4,000,000 CY of Rock**
- **Environmental Resource Monitoring**
- **Environmental Mitigation**
 - Coral Relocation
 - Artificial Reef Creation
 - Seagrass Beds Restoration



How we got here with the Dredge

- Congressional Authorization and Appropriation to begin Study 1999
- Study Phase (GRR) 2000
- Congressional Authorization 2007
- Preconstruction, Engineering, and Design Phase (PED) and Permitting Phase 2009
- PPA – August 2012
- Construction Phase 2013
- Completion July 2015
- Post Construction Environmental Monitoring Phase 2015



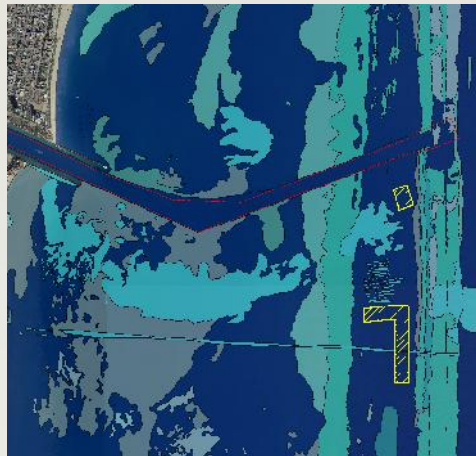
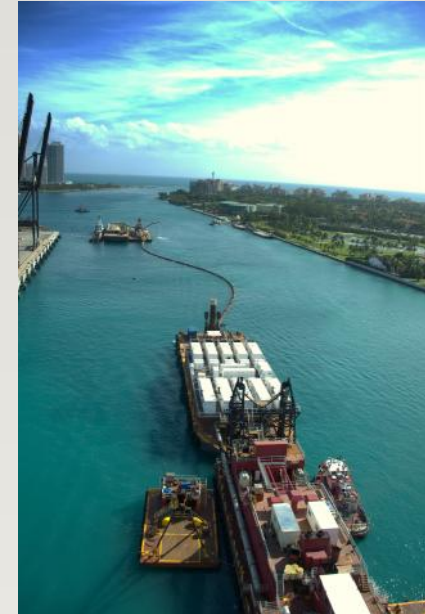
Unique Challenges

- Nearly 100% Non-Federal Funding, advanced funding with Corps managing – Florida Sunshine Law
- Permit petitions, ESA lawsuits, local opposition from environmental groups.
- Unexpected discoveries.
- Temporary influence of massive infrastructure improvement project (marine vessel traffic, noise, sedimentation) has led to adaptive management implementation.



Dredge Status Today

- Total Current Estimated Cost: \$207,376,816.95
- Total Available Material to be Excavated 5,151,544 CY
- Total Dredged to date: Approximately 3,000,000 CY
- ~65% including mitigation features
- Required Completion Date is July 31, 2015



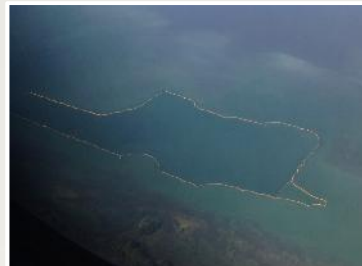
Over 11 acres Artificial have been built

- >3'x3' dimensions for stabilization
- 60% low relief <3ft height
- 40% high relief >3ft height

Over 900 Corals relocated.

- Add'l 200 Acropora corals relocated in November 2014.

16.6 Acres Seagrass Restoration underway



Thank You



PORT MIAMI

For more information
visit our website
www.miamidade.gov/portofmiami