

McDuffie Coal Terminal



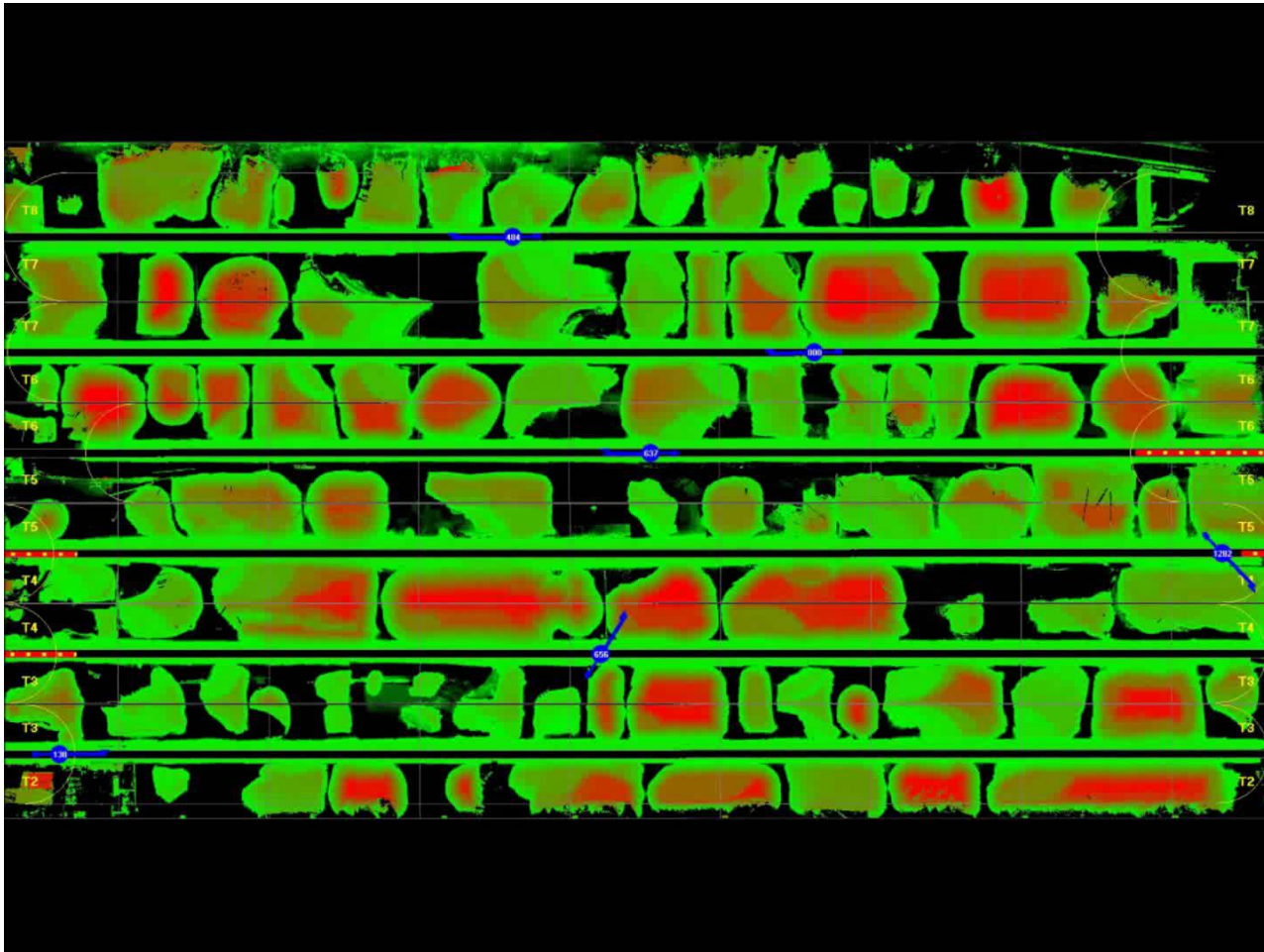
Alabama State Port Authority







Stockyard Automation (video)









SR2

☒ Reclaiming - active
☐ Manual mode
☒ Automatic mode

Yard: 2N 925 to 387
Cur. amount: 2136 t
Amount to do: 0 t
Set amount: 0 t

Reclaim rate: 2459 t/h

Start End

stop material flow

SR3

☐ Manual Mode
☒ Manual mode
☐ Automatic mode

Yard: to
Cur. amount: 0 t
Amount to do: 0 t
Set amount: 0 t

Reclaim rate: 0 t/h

Start End

stop material flow

SR5

☒ Reclaiming - active
☐ Manual mode
☒ Automatic mode

Yard: 2N 1190 to 1640
Cur. amount: 2783 t
Amount to do: 0 t
Set amount: 0 t

Reclaim rate: 877 t/h

Start End

stop material flow

SR6

☐ Manual Mode
☒ Manual mode
☐ Automatic mode

Yard: to
Cur. amount: 81553 t
Amount to do: 0 t
Set amount: 0 t

Reclaim rate: 0 t/h

Start End

stop material flow

WS1

☐ Manual Mode
☒ Manual mode
☐ Automatic mode

Yard: 3S 180 to 610
Cur. amount: 0 t
Dist. to Material: 98'5"
Cur. height: 48'7"
Flow rate: 0 t/h

Start End

stop material flow

SR2 | SR3 | SR5 | SR6 | WS1

Order | Performance | Status | Anti Collision

Mode:

Reclaim

File:

Yard:

2N

 from

1190

 to

1640

 ft

Material type:

Blue Creek 7

Set amount:

0

 t

Reclaim rate setpoint:

1200

 t/h

Set values

Additional amount:

0

 t

Set

Pilgrim step:

0

 ft

Set

Ground layer off limits: ☐

Reclaim ground layer first: ☒

Reclaim top layer first: ☐

Reclaim 3B

Reclaim 3A

Set

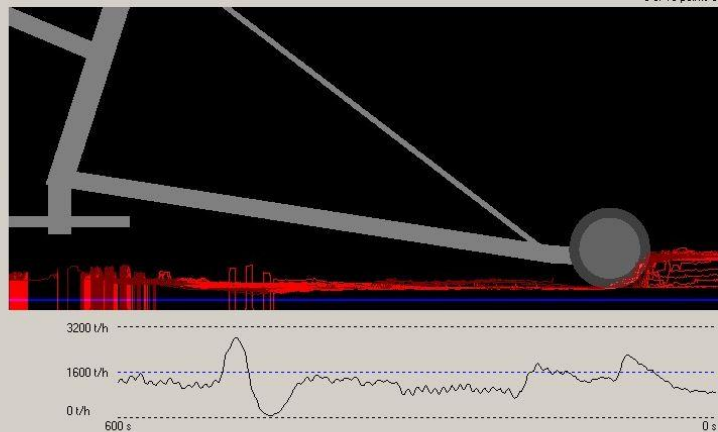
SR5

0 of 19 points old

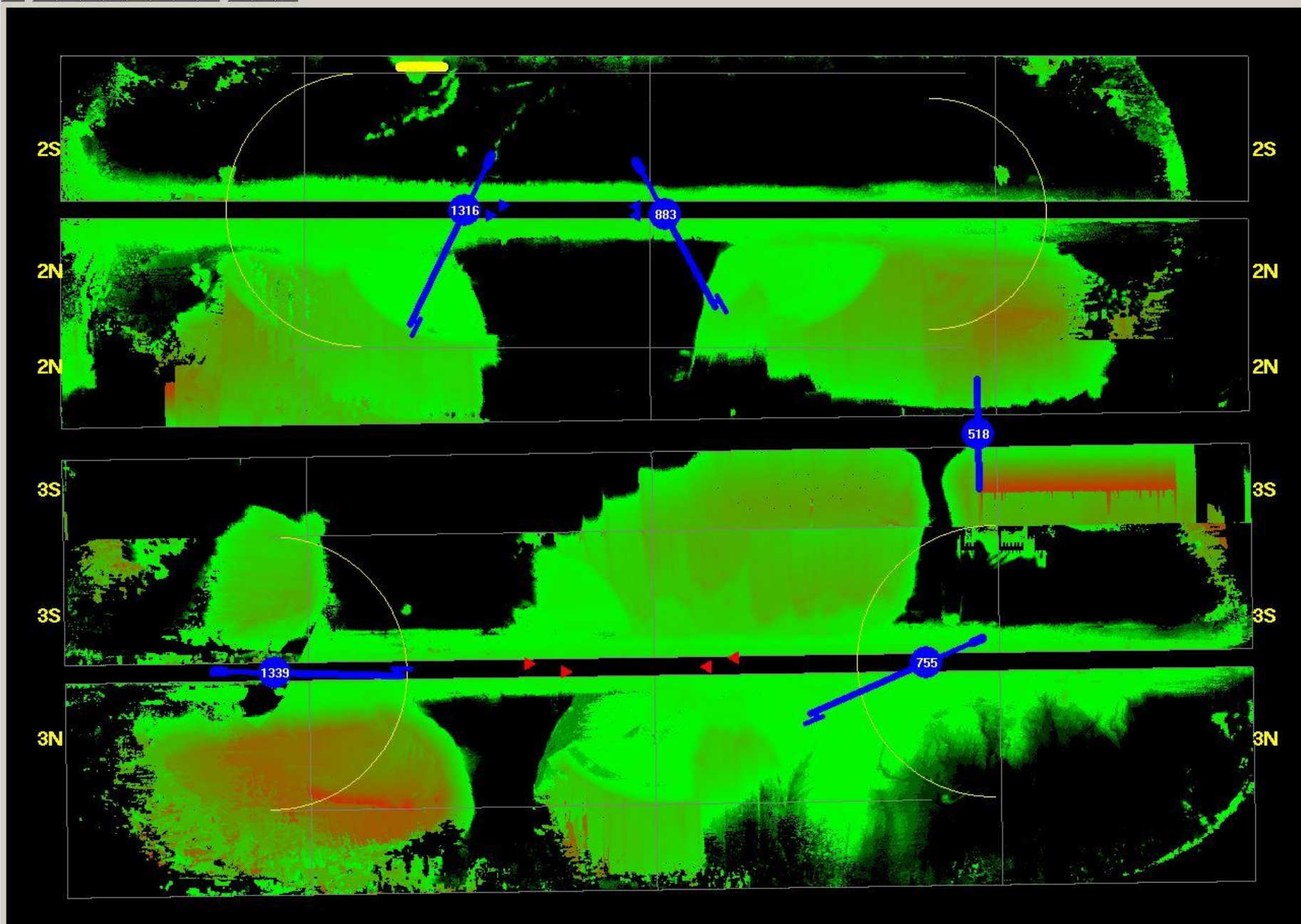
Continue

Ack. Errors

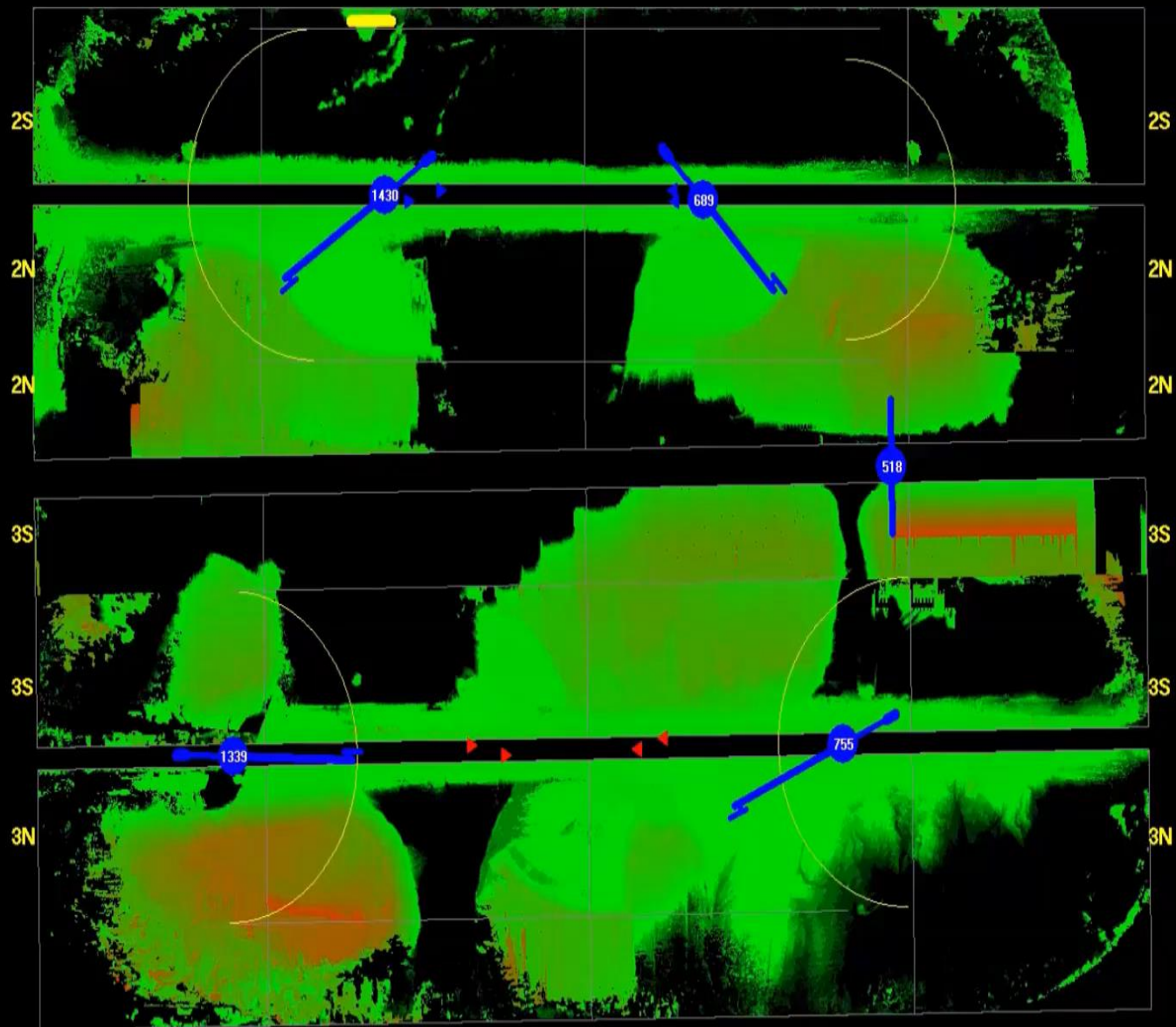
Error Handling

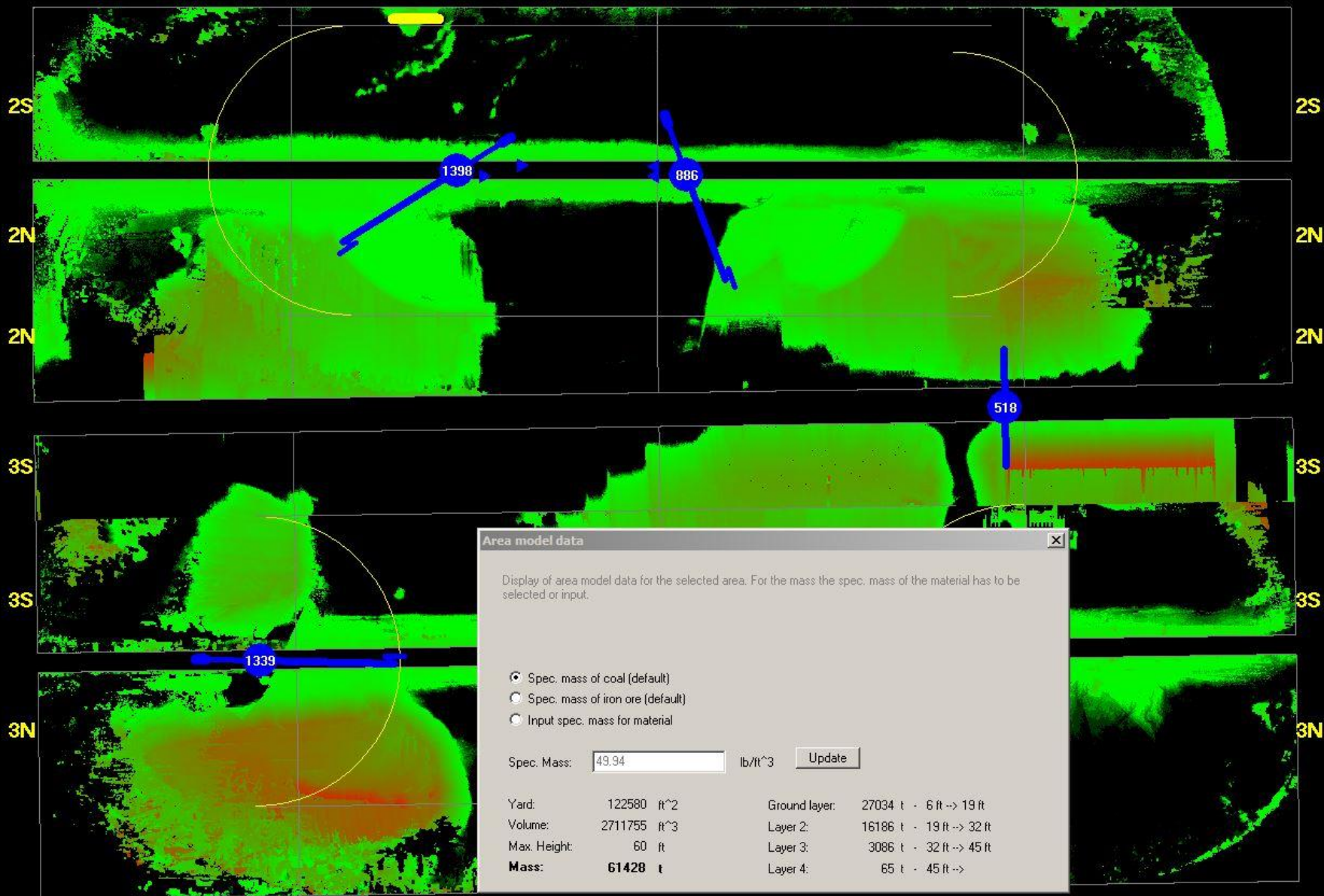
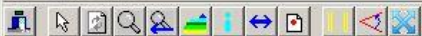


Slewing to the yardbelt











WEATHER STATION

WEATHER STATION

TEMPERATURE: 76.3
 HUMIDITY: 82.0
 WIND SPEED: 7.0
 WIND DIRECTION: SOUTHEAST
 RAIN GAUGE:
 TODAY 0.0
 YESTERDAY 0.0
 TREND
 CLOSE

MENU

BELT SCALES

FLOP GATES

LIGHTS

MIXING

DUST SUPPRESSION

ELECTRICAL BUILDINGS

OPERATIONAL EQUIPMENT

CONVEYOR RUNTIMES

TRENDS

ALARM HISTORY

Belt Scale

TONNAGE C-19

RATE 1500 PER HR.
 SHIFT 68895
 TOTAL 68895
 CLOSE

Belt Scale

TONNAGE C-RR

RATE 1800 PER HR.
 SHIFT 1376
 TOTAL 1376
 CLOSE

LOGIN/
 LOGOUT

BARGE
 LOADER #2







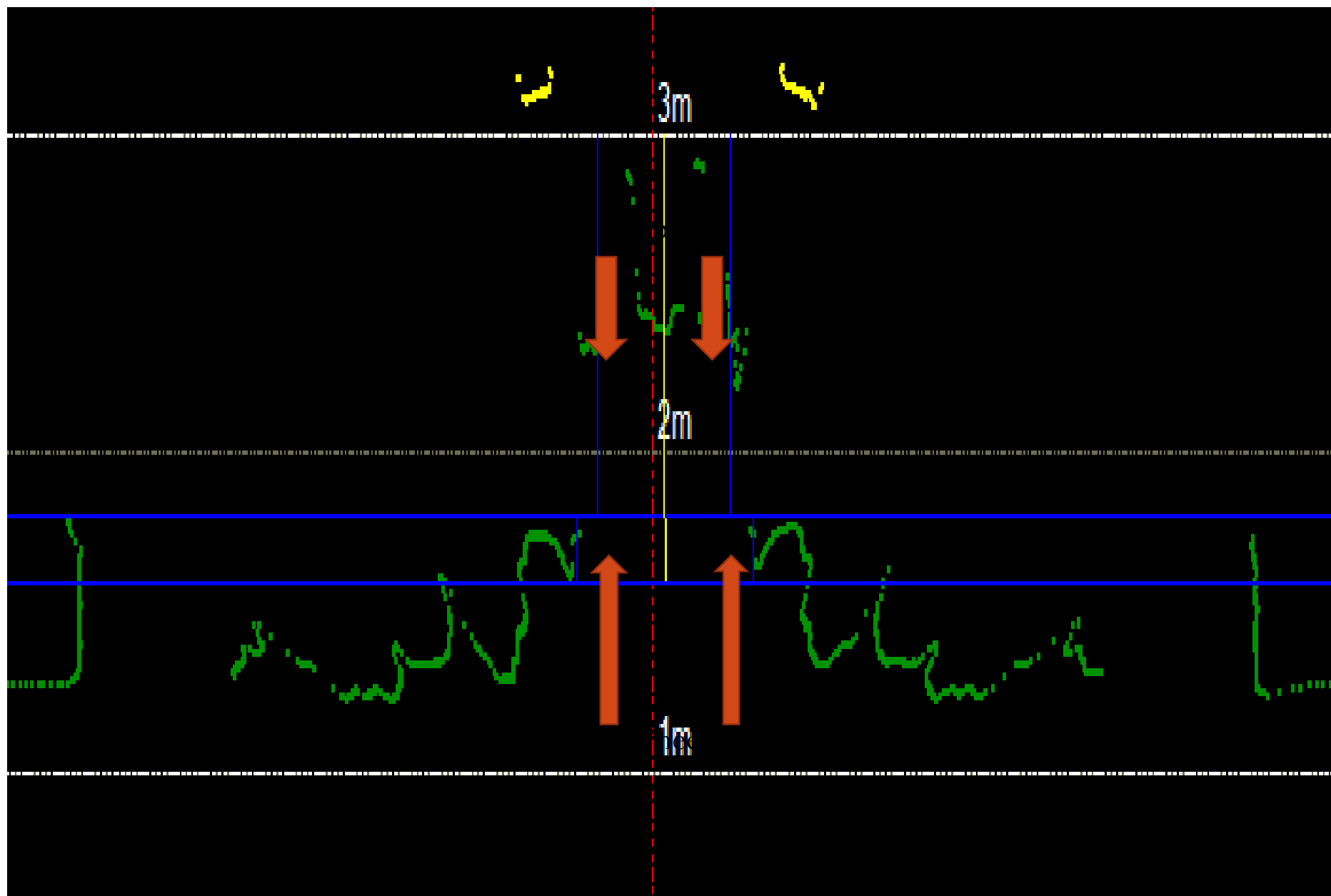








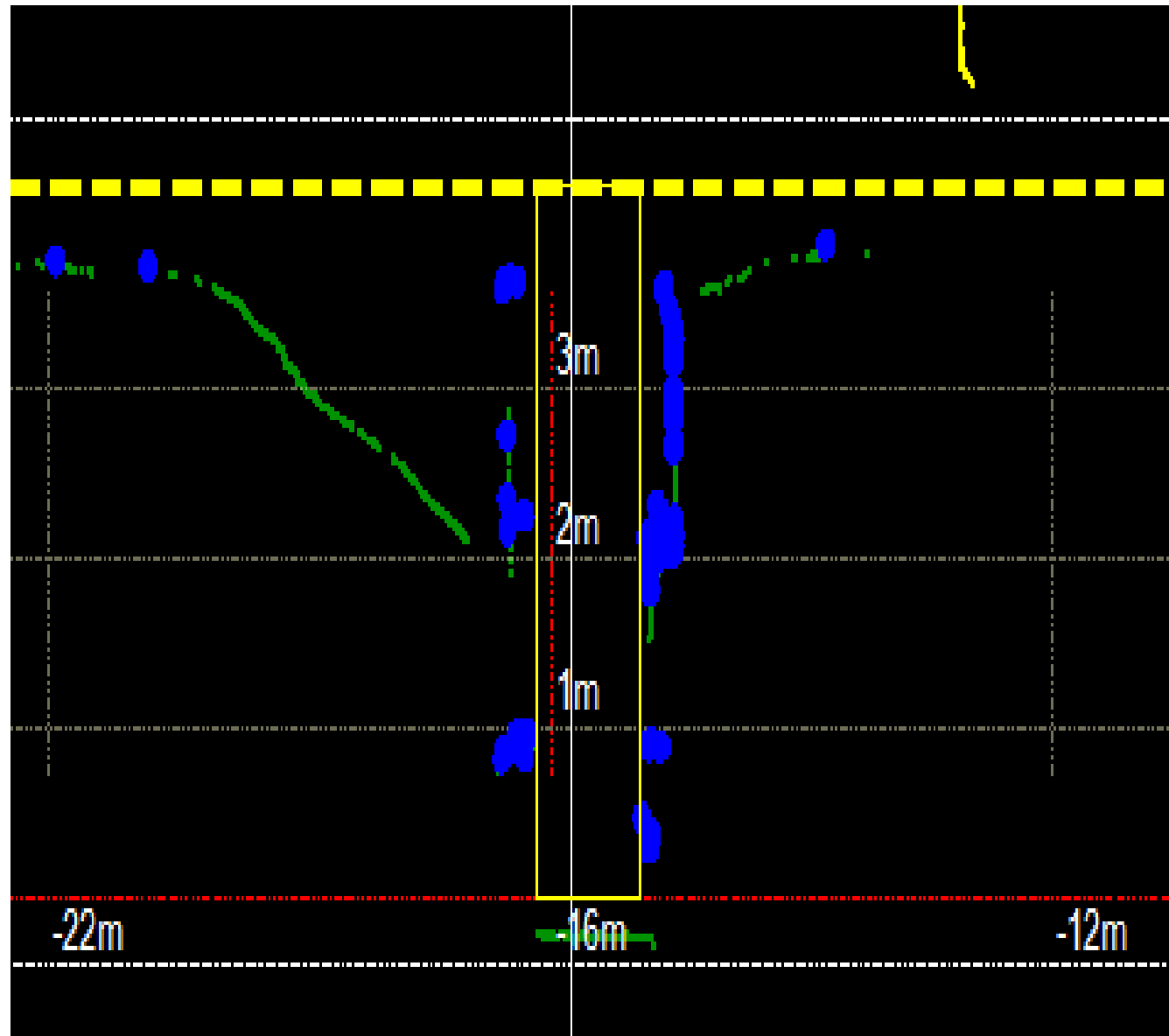








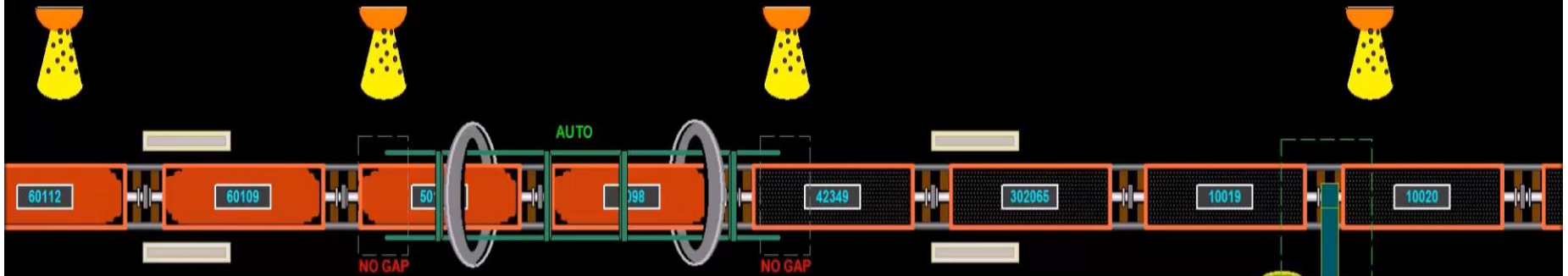




CAR DUMP #2

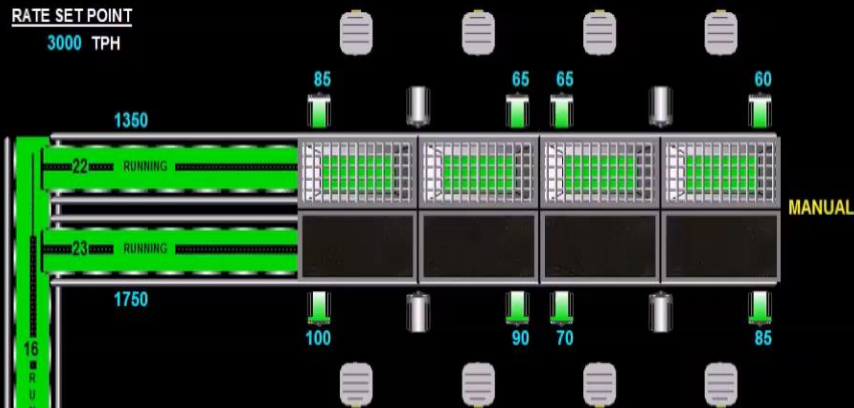
EAST CAR DUMP

Wednesday, May 18,
2016 10:45:00 AM



NO. OF CARS DUMPED: 70

RATE SET POINT
3000 TPH



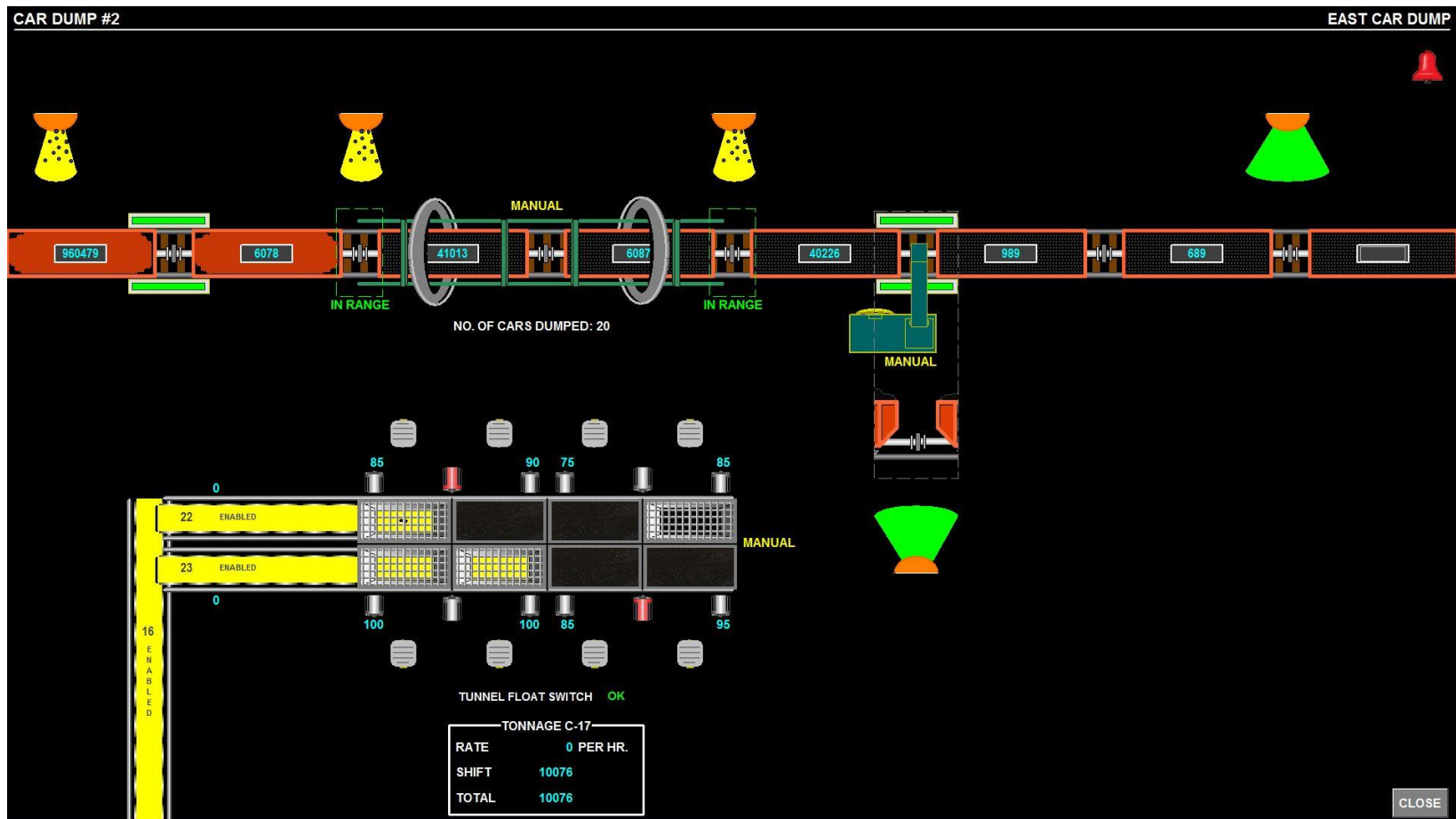
TUNNEL FLOAT SWITCH OK

TONNAGE C-17	
RATE	3240 PER HR.
SHIFT	1578
TOTAL	7286

CLOSE

Dumper Overview

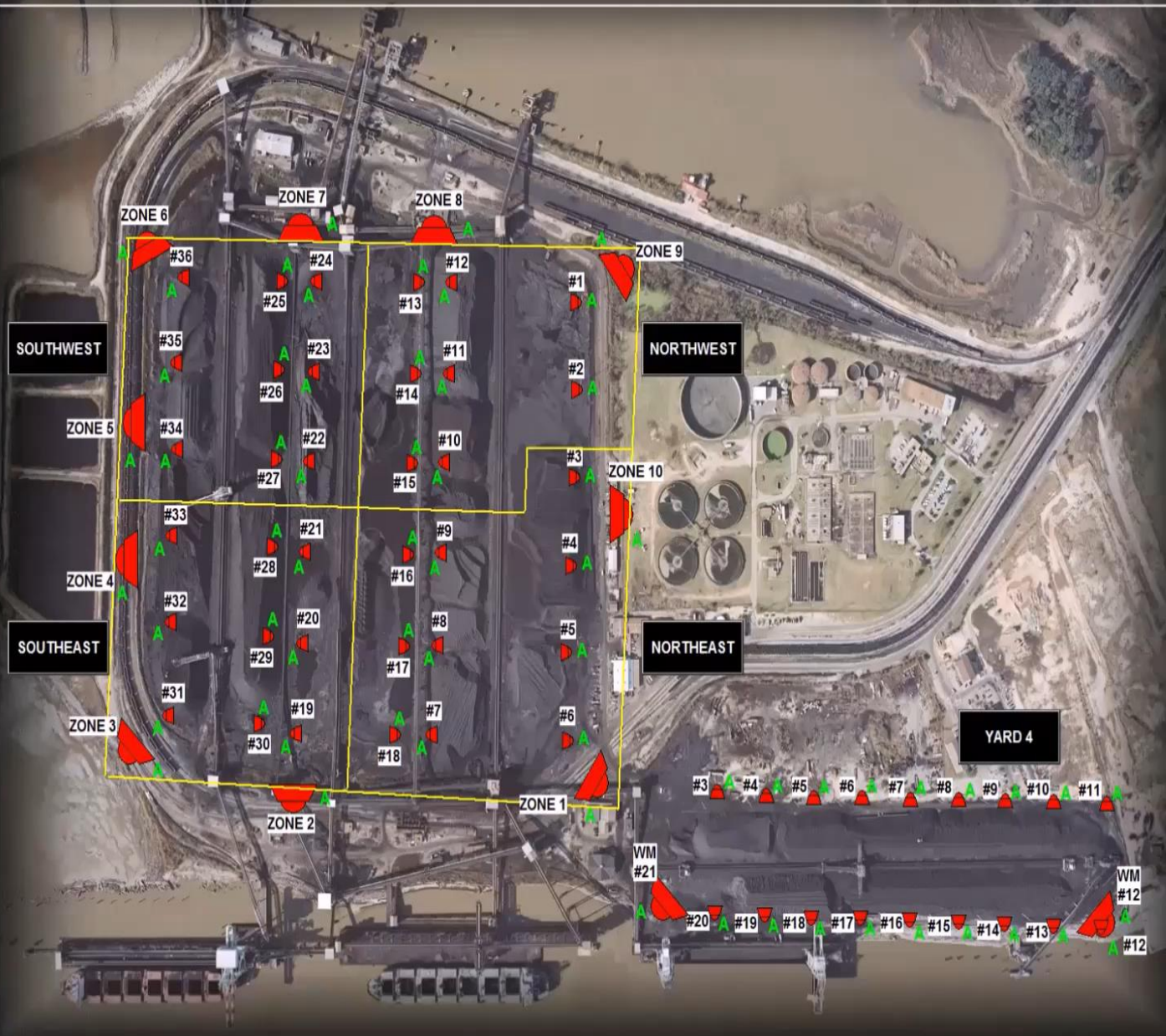
- Provides realtime status to management and information systems





OVERVIEW

DUST SUPPRESSION SYSTEM



WEATHER STATION

TEMPERATURE: 80.5
HUMIDITY: 82.0
WIND SPEED: 7.0
WIND DIRECTION: SOUTHEAST

RAIN GAUGE:

TODAY	0.0
YESTERDAY	0.0

TREND

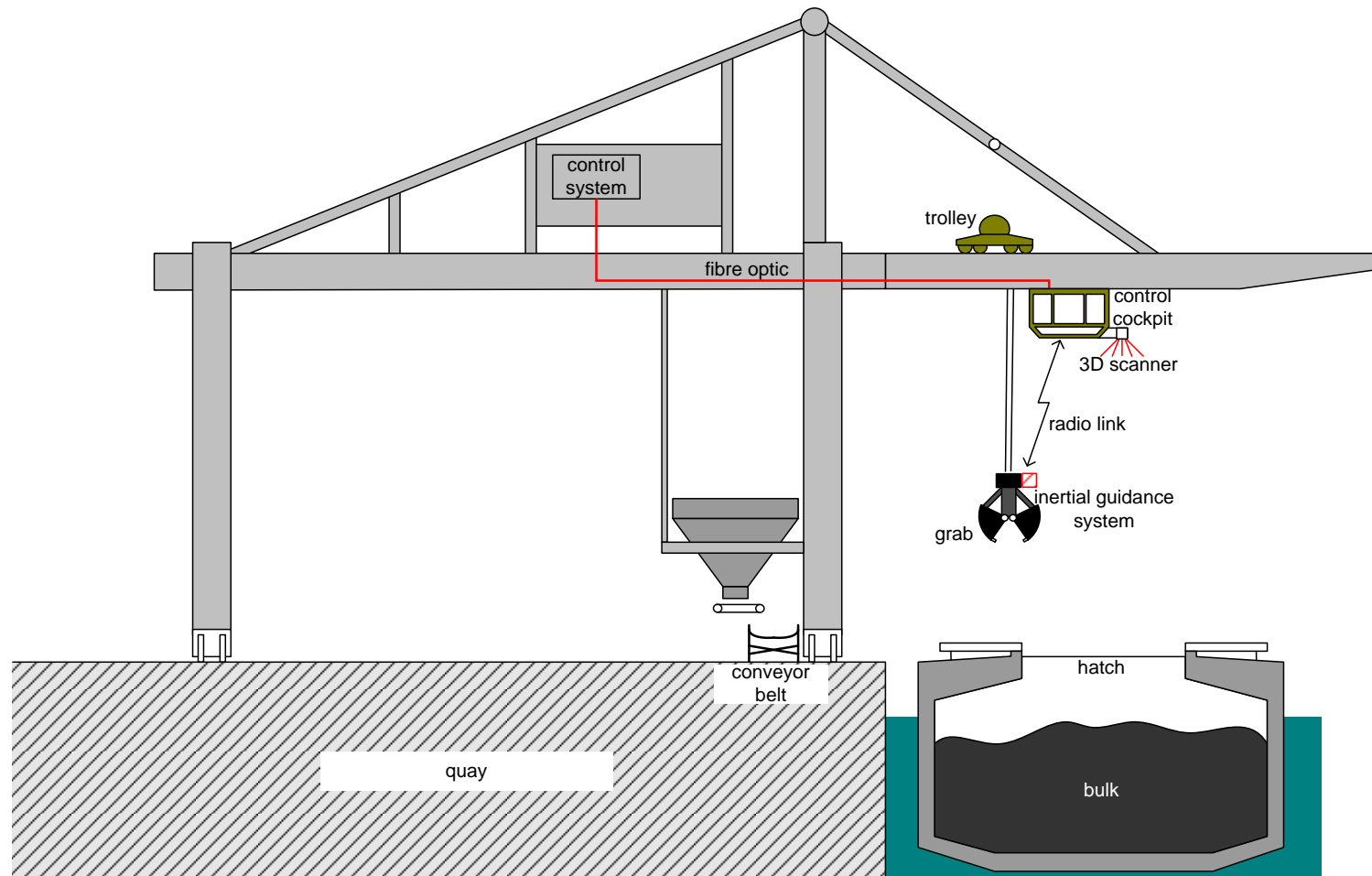
COMMS OK

CLOSE





Grab Unloader Automation







Shiploader Automation

ShipLoader Visualization App - iSAM AG

Model Settings Sandbox Layouts Help

Status Summary Status Trees Connections ViewSettings Logging Exceptions

Connection Status to Live System:

Real-Time Anti Collision

StatusTree (On)

MachineState (Off)

Collision Detection (On)

Collision Points (On)

ShipModel:

StatusTree (On)

MachineState (On)

Collision Detection (On)

LivePoints (On)

PersistentPoints (On)

Hatches Detection (On)

Other Systems:

Button Signal (On)

Last Received Data:

Collision System:

Status Tree: 2:50:09:187
update cycle time: 0 ms

Collision Detection Results:

3:01:25:703
collision zones: 2
update cycle time: 47 ms
processing time: 31 ms

Machine State:

<last time>
update cycle time: <time span>

Live Points:

3:01:26:390
update cycle time: 828 ms
processing time: 16 ms

ShipLoader System:

Status Tree: 2:50:02:578
update cycle time: 0 ms

Collision Detection Results:

3:01:26:265
collision zones: 3
update cycle time: 609 ms
processing time: 16 ms

Machine State:

3:01:26:265
update cycle time: 62 ms

Live Points:

3:01:24:234
update cycle time: 7844 ms
processing time: 312 ms

57 FPS

57 FPS

iSAM AG

iSAM AG

Global Status: OK Button Signal: 102

3:01:26 - 2016-01-20 - Wednesday

HPP-SLI-VIS01 EN 15:01

The interface displays a 3D visualization of a shiploader system. The main view shows a yellow shiploader structure positioned over a ship's deck, which is represented by a grid of red and yellow blocks. The ship's hull is visible in the background. The interface includes a sidebar with various status indicators and a bottom status bar. The status bar shows 'Global Status: OK' and 'Button Signal: 102'. The bottom right corner displays the date and time: '3:01:26 - 2016-01-20 - Wednesday'.

Trump Digs Coal!

