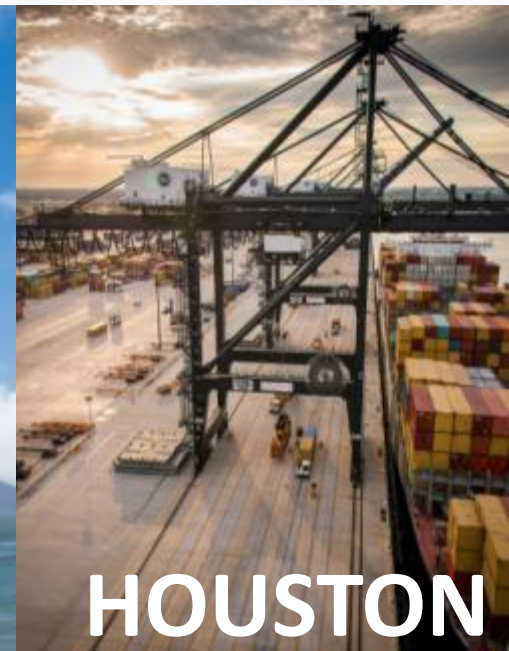


Port of **Houston** Authority



HOUSTON

America's distribution hub for the next generation

Gilda Ramirez, Sr. Director Port of Houston Authority

American Association of Port Authorities

March 3, 2016



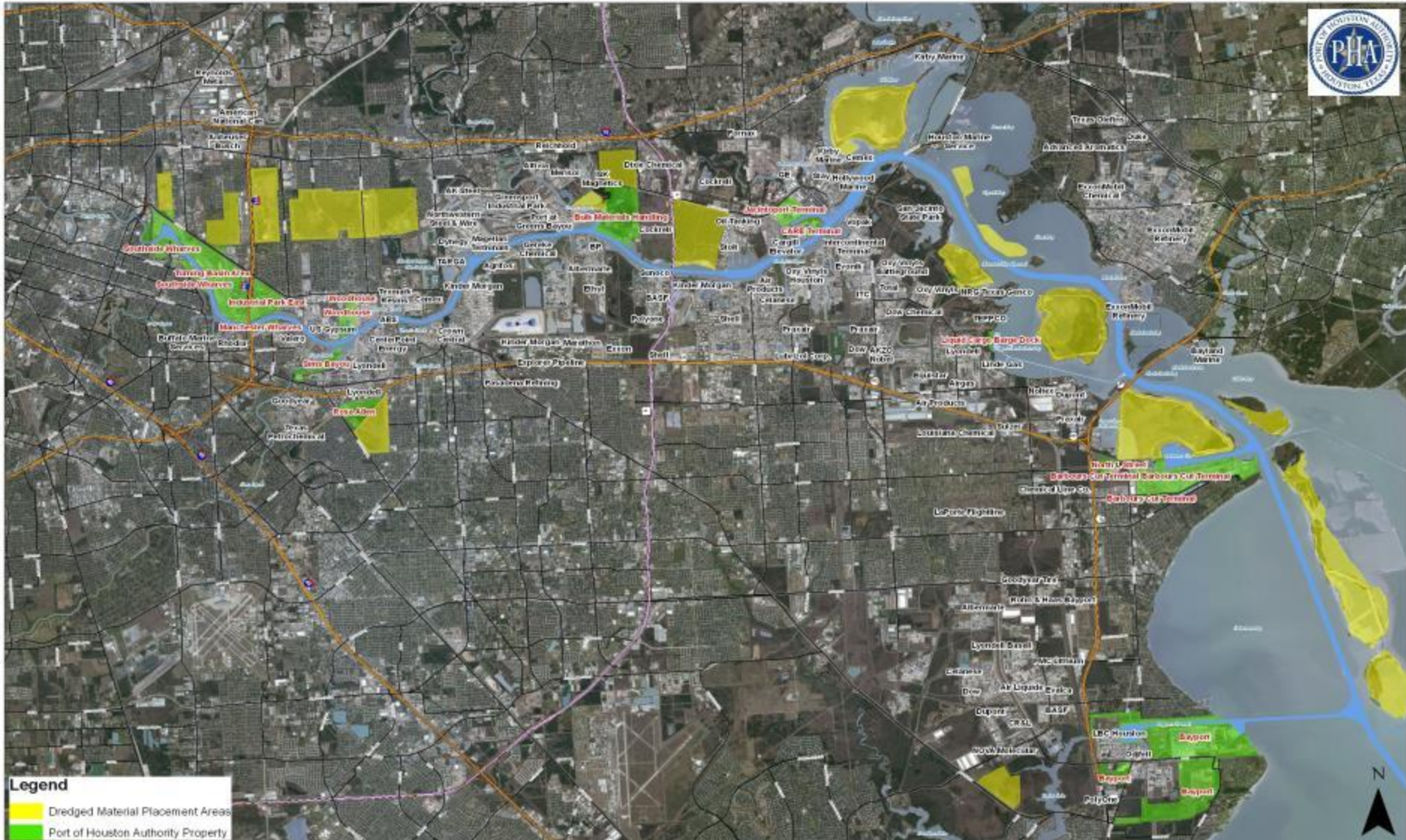
PORT OF HOUSTON



ABOUT THE PORT OF HOUSTON

- Serving Houston for 100+ years
- 150 private and public facilities
- #1 U.S. port in foreign waterborne tonnage
- #1 U.S. petroleum, steel & project cargo port
- PHA is sponsor of the Houston Ship Channel
- PHA has 43 general cargo wharves
- Deep water access/intermodal

HOUSTON SHIP CHANNEL



PORT OF HOUSTON PARTNERS IN MARITIME EDUCATION (PHPME)

- Non-profit PHPME formed in 2009 with support from Port Authority
- PHPME helped establish two-year and four-year maritime degree programs and training at local higher education institutions
- \$3.5 million investment in education in past five years



MARITIME EDUCATION PROGRAMS



- Maritime Academy at local high schools
- Texas Southern University Maritime Degree Program/Summer Maritime Academy
- San Jacinto College Bayport Maritime Campus
- Houston Community College
- Texas A&M University at Galveston

MARITIME EDUCATION PROGRAMS



PHPME PARTNERS IN EDUCATION

Industry Partners

Aramco Services Company
Bay-Houston Towing Co.
Buffalo Marine Service, Inc.
G & H Towing Company
Gulf Stream Marine, Inc.
Gulf Winds International
Higman Marine Services, Inc.
Houston Pilots Association
Intermarine Worldwide
J. Ray McDermott
Kirby Corporation
Rickmers-Linie America
Seamar Holdings, LLC
Southwest Shipyard, LP
Texas Terminals, LP
West Gulf Maritime Association

Academic Partners

School Districts

Houston ISD
Galena Park ISD
La Porte ISD
Pasadena ISD

Community Colleges

Houston Community College
Lee College-Baytown
San Jacinto College

Universities

Texas A&M University-Galveston
Texas Southern University
University of Houston

Federal Partners

U.S. Coast Guard
U.S. Customs and Border Protection
U.S. Maritime Administration
U.S. Merchant Marine Academy



MARITIME CAREER PATHWAYS

Inland Service

- Deckhand
- Tankerman
- Apprentice Mate
- Mate-Pilot
- Master of Towing (Captain)

Near Coastal Service

- Ordinary Seaman
- Able-bodied Seaman
- Master 100-1600 Ton

Oceangoing

- Cooks and Stewards
- Ordinary Seaman
- Able-bodied Seaman
- Third Mate
- Second Mate
- Chief Mate
- Master

4 SECTORS OF THE MARITIME INDUSTRY

- Shipbuilding and ship repair
- Ports and logistics
- Seagoing careers
- Pleasure craft and boating



SHIPBUILDING AND SHIP REPAIR



- Build and repair seagoing vessels
- Large-scale projects
- Require flexible, dynamic and motivated workforce
- Excellent wage and career opportunities

PORTS AND LOGISTICS



- Move everything we use as a society across the supply chain
- Constantly changing industry
- Intermodal systems, moving from ship to train or to roads
- Perfect for problem solvers with mission-driven attitudes

SEAGOING CAREERS



- Travel the world on the high seas
- Jobs range from maintaining engines to piloting to cooking meals
- Coast Guard certifications often required

PLEASURE CRAFT AND BOATING



- Design, produce, repair and maintain yachts and pleasure craft
- Perfect for those who enjoy working with others who are out to enjoy themselves
- Travel the world on a cruise ship

WORK AT THE PORT



Questions?

